

Towers Wills

Town & Country

📞 01935 577 032 | 01460 298 530 | ✉ info@towerswills.co.uk



49, Ermine Street, Yeovil, Somerset BA21 3QT

£280,000

Towers Wills welcome to the market this spacious townhouse, which is in excellent condition throughout, early inspection is strongly advised and briefly comprises; hall, cloakroom, kitchen, lounge/diner, three bedrooms, master en-suite, family bathroom, parking and enclosed rear garden.

Hallway

Double glazed door to the front, radiator and storage cupboard.

Cloakroom

Suite comprising wash hand basin, w.c, window to the front and radiator.

Kitchen

Comprising of a range of wall, base and drawer units, work surfacing with insert sink/drainers, integrated electric oven, integrated electric hob with cookerhood over, tiling to splash prone areas, breakfast bar, integrated dishwasher, plumbing for washing machine, space for fridge/freezer and window to the front.

Lounge Diner

A spacious family living area with patio doors opening onto the rear garden, tiled feature fireplace, under stairs storage cupboard, radiator and window to the side.

First Floor Landing

Stairs from reception hallway, radiator and stairs to the second floor landing.

Bedroom Two

Window to the front, radiator, fitted wardrobe and cupboard/drawer space.

Bedroom Three

Window to the rear and radiator.

Bathroom

Suite comprising of whirlpool bath with mixer tap shower attachment, wash hand basin, w.c, chrome radiator and extractor fan.

Second Floor Landing

Stairs from the first floor landing.

Master Bedroom

A particularly spacious master bedroom with outlook to the front, two radiators, hatch to roof space and good size walk-in wardrobe.

Shower Room

With walk-in shower, wash hand basin, w.c, vanity unit and velux skylight to the rear.

Outside

To the front of the property is an enclosed area of front garden, whilst to the rear of the property, the garden has been landscaped for low maintenance and enclosed with gated side access.

Key Features

- In Excellent Condition Throughout
- Townhouse
- Three Bedrooms
- Master En-suite
- Parking
- Enclosed Rear Garden

Contact Us

Towers Wills Estate

Agents - Yeovil

114, Hendford Hill

Yeovil

Somerset

BA202RF

T: 01935 577032

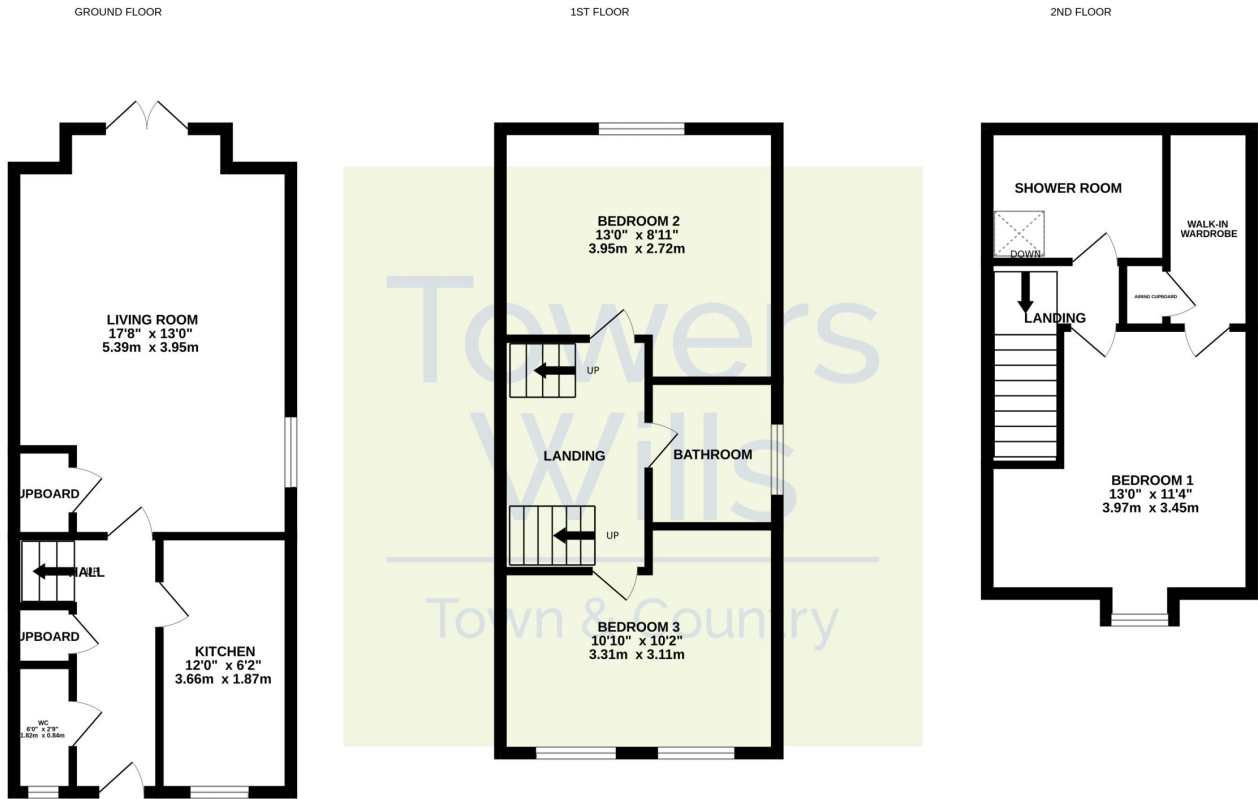
E: info@towerswills.co.uk

Energy Efficiency

Score	Energy rating	Current	Potential
92+	A		
81-91	B		85 B
69-80	C	74 C	
55-68	D		
39-54	E		
21-38	F		
1-20	G		



Floor Plan



Whilst every attempt has been made to ensure the accuracy of the floorplan contained here, measurements of doors, windows, rooms and any other items are approximate and no responsibility is taken for any error, omission or mis-statement. This plan is for illustrative purposes only and should be used as such by any prospective purchaser. The services, systems and appliances shown have not been tested and no guarantee as to their operability or efficiency can be given.
Made with Metropix ©2024

Please Note No tests have been undertaken of any of the services and any intending purchasers should satisfy themselves in this regard. Towers Wills Ltd for themselves and for the vendor of this property whose agents they are, give notice that, (i) these particulars do not constitute any part of an offer or contract, (ii) all statements contained within these particulars are made without responsibility on the part of Towers Wills or the vendor, (iii) whilst made in good faith, none of the statements contained within these particulars are to be relied upon as a statement of representation or fact, (iv) any intending purchaser must satisfy him/herself by inspection or otherwise as to the correctness of each of the statements contained within these particulars, (v) the vendor does not make or give either Towers Wills or any person in their employment any authority to make or give representation or warranty whatsoever in relation to this property.

Photographs / Floor Plans Photographs are reproduced for general information and it must not be inferred that any item is included for sale with this property. Please note floor plans are not to scale and are for identification purposes only. The photographs used in these particulars may have been taken with the use of a wide angle lens. If you have any queries as to the size of the accommodation or plot, please address these with the agent prior to making an appointment to view

Towers Wills

The White House, 114 Hendford Hill, Yeovil BA20 2RF

Yeovil 01935 577032 / South Petherton 01460 298530

info@towerswills.co.uk | www.towerswills.co.uk