

Towers Wills

Town & Country

📞 01935 577 032 | 01460 298 530 | ✉ info@towerswills.co.uk



15, Kenmore Drive, Yeovil, Somerset BA21 4BG

Guide Price £210,000

Towers Wills welcome to the market this spacious two-bedroom semi-detached bungalow situated in a popular location within walking distance of local bus stop, hospital and town centre. Selling with no onward chain, the property briefly comprises of; hallway, lounge, kitchen, conservatory, two double bedrooms, bathroom, separate WC, garage, good sized rear garden and off-road parking to front.

Reception Hallway

Door to the side and loft access to part boarded loft which is insulated with pull down ladder and light.

Lounge 3.68m x 4.45m

Spacious living room with window to the front, electric heating and open fireplace with stone surround.

Kitchen 3.16m x 3.13m

Comprising of a range of wall, base and drawer units, work surfacing with inset sink/drain, electric cooker point with cookerhood over, plumbing for washing machine, space for fridge, space for freezer, windows to both side and rear, cupboard and door through to the conservatory.

Conservatory 2.11m x 3.87m

Patio doors to rear garden.

Bedroom One 4.15m x 3.18m

Window to the rear, built-in storage cupboard and airing cupboard.

Bedroom Two 2.80m x 3.75m

Bay window to the front and electric heating.

Bathroom

Comprising of bath with shower over, wash hand basin with vanity unit under, window to the side, part tiled and wall mounted heater.

Separate W.C

With wc and window to the side.

Outside

To the front of the property is a gravel area offering ample parking with a shared driveway that leads to the garage.

Garage

With 'up and over' door, power and light and pedestrian door to the garden.

Rear Garden

Majority laid to lawn, with planted borders, garden pond and gated access to driveway area.

Key Features

- Popular quiet location
- Two double bedrooms
- Conservatory
- South facing garden
- NO ONWARD CHAIN

Contact Us

Towers Wills Estate Agents - Yeovil

114, Hendford Hill

Yeovil

Somerset

BA202RF

T: 01935 577032

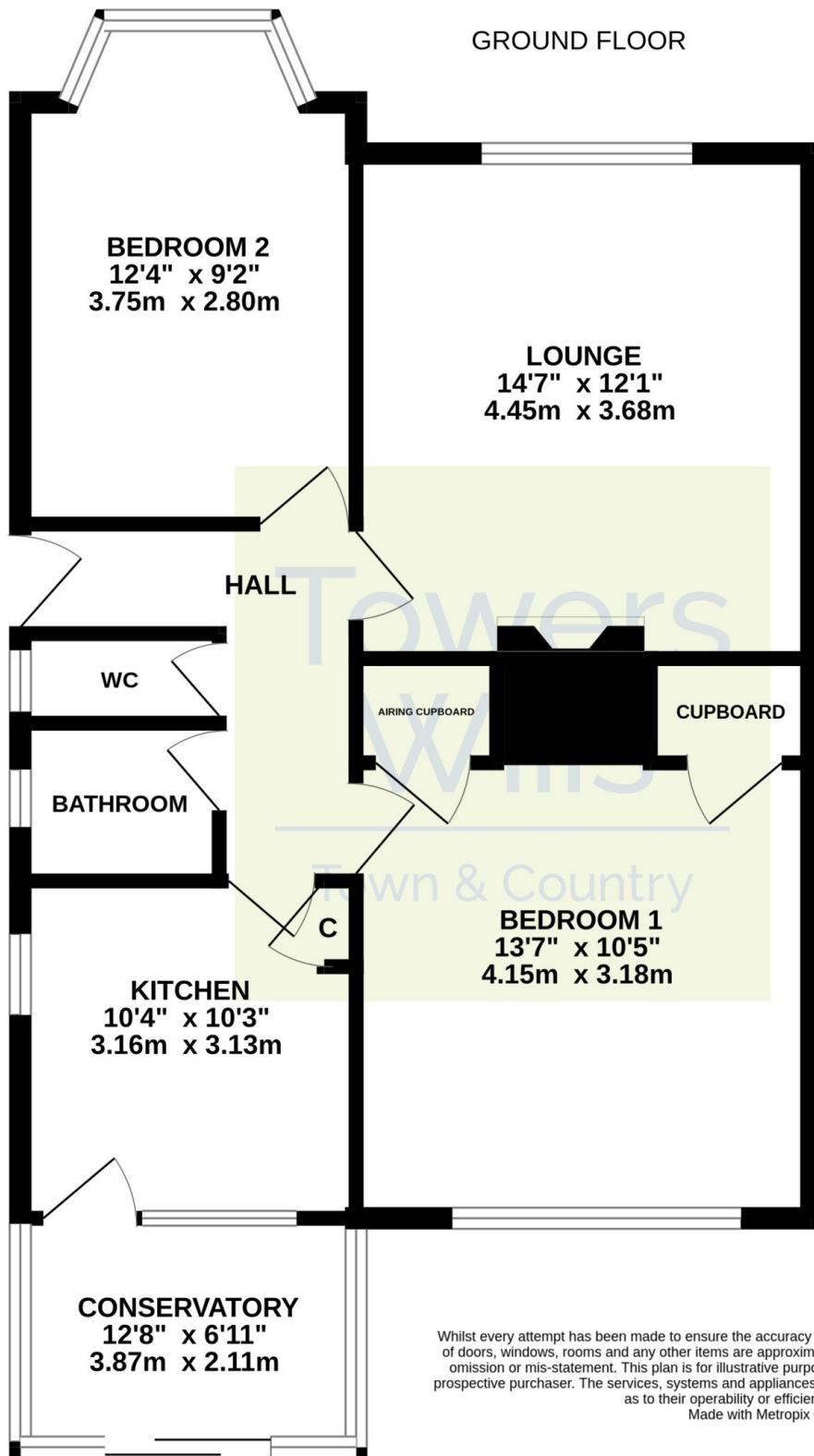
E: info@towerswills.co.uk

Energy Efficiency

Score	Energy rating	Current	Potential
92+	A		
81-91	B		83 B
69-80	C		
55-68	D		
39-54	E		
21-38	F	30 F	
1-20	G		



Floor Plan



Whilst every attempt has been made to ensure the accuracy of the floorplan contained here, measurements of doors, windows, rooms and any other items are approximate and no responsibility is taken for any error, omission or mis-statement. This plan is for illustrative purposes only and should be used as such by any prospective purchaser. The services, systems and appliances shown have not been tested and no guarantee as to their operability or efficiency can be given.
Made with Metropix ©2023

themselves and for the vendor of this property whose agents they are, give notice that, (i) these particulars do not constitute any part of an offer or contract, (ii) all statements contained within these particulars are made without responsibility on the part of Towers Wills or the vendor , (iii) whilst made in good faith, none of the statements contained within these particulars are to be relied upon as a statement of representation or fact , (iv) any intending purchaser must satisfy him/herself by inspection or otherwise as to the correctness of each of the statements contained within these particulars, (v) the vendor does not make or give either Towers Wills or any person in their employment any authority to make or give representation or warranty whatsoever in relation to this property.

Photographs / Floor Plans Photographs are reproduced for general information and it must not be inferred that any item is included for sale with this property. Please note floor plans are not to scale and are for identification purposes only. The photographs used in these particulars may have been taken with the use of a wide angle lens. If you have any queries as to the size of the accommodation or plot, please address these with the agent prior to making an appointment to view

Towers Wills

The White House, 114 Hendford Hill, Yeovil BA20 2RF

Yeovil 01935 577032 / South Petherton 01460 298530

info@towerswills.co.uk | www.towerswills.co.uk