

# THE ORWELL

PLOTS 277, 284, 289, 297, 300, 319, 393 & 460



## St. Michael's Hurst

BISHOP'S STORTFORD

### 4 bedroom house

---

Set in a pleasing L-shape, the Orwell is a striking four-bedroom family home. Both the kitchen and the living room feature doors opening out onto the garden, while a useful utility room has been included to help with busy day-to-day life. All four bedrooms upstairs are well-proportioned, which makes the property perfect for entertaining visitors.

---

**////** ParadigmLiving



**COUNTRYSIDE**  
Homes

Computer generated image of The Orwell plot 319. Building materials, design and landscaping may differ from those illustrated. We operate a policy of continual product development and individual features may vary. Please ask a Sales Consultant for further details. April 2023.

# THE ORWELL

PLOTS 277\*, 284, 289, 297, 300\*, 319\*, 393 & 460

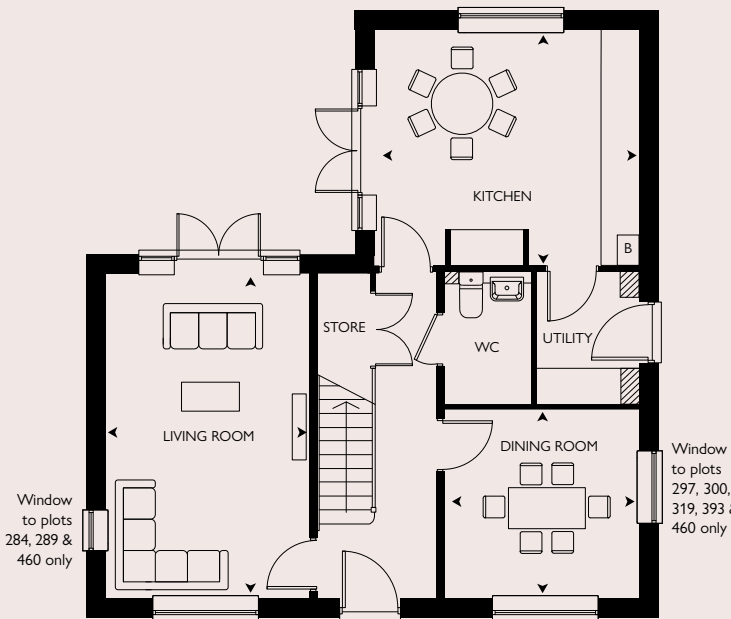
4 bedroom house



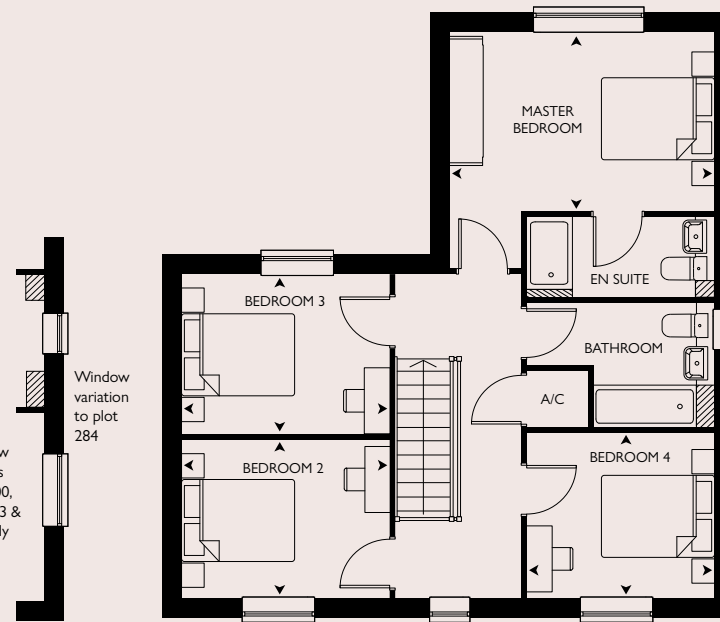
St. Michael's Hurst

BISHOP'S STORTFORD

Plot 277 has an attached garage



GROUND FLOOR



FIRST FLOOR

## GROUND FLOOR

KITCHEN  
4.28m x 3.91m      14'0" x 12'0"

DINING ROOM  
3.12m x 3.13m      10'3" x 10'2"

LIVING ROOM  
5.39m x 3.38m      17'8" x 11'1"

## FIRST FLOOR

MASTER BEDROOM  
4.28m x 3.97m      14'0" x 13'0"

BEDROOM 2  
3.55m x 2.60m      11'7" x 8'8"

BEDROOM 3  
3.55m x 2.60m      11'7" x 8'8"

BEDROOM 4  
3.12m x 2.68m      10'2" x 8'9"

## OVERALL INTERNAL AREA

130.8 sq m      1408 sq ft

\* = Handed Plot    B = Boiler    A/C = Airing cupboard

All room sizes are approximate with maximum dimensions which have been taken into the kitchen units and are not intended for carpet sizes or items of furniture. All dimensions and areas listed are to finished measurements. Countryside operates a policy of continuous product development and all room layouts may be subject to minor modifications. Kitchen, bathroom and furniture layouts shown are indicative only. Please ask Sales Consultants for detailed information regarding specific properties.