

# THE BLENHEIM

PLOTS 282, 305, 321, 463, 469 & 481



St. Michael's Hurst  
BISHOP'S STORTFORD

## 4 bedroom house

The Blenheim is a sophisticated four bedroom home which is well worthy of its famous name. Sky lights add beautiful natural light to the living/dining room on the ground floor, which is open plan in design. The master bedroom has the feeling of being set apart from the other rooms on the first floor, while the second bedroom enjoys the run of the upper level.

Computer generated image of The Blenheim plot 481. Building materials, design and landscaping may differ from those illustrated. We operate a policy of continual product development and individual features may vary. Please ask a Sales Consultant for further details. April 2023.

ParadigmLiving

COUNTRYSIDE  
Homes

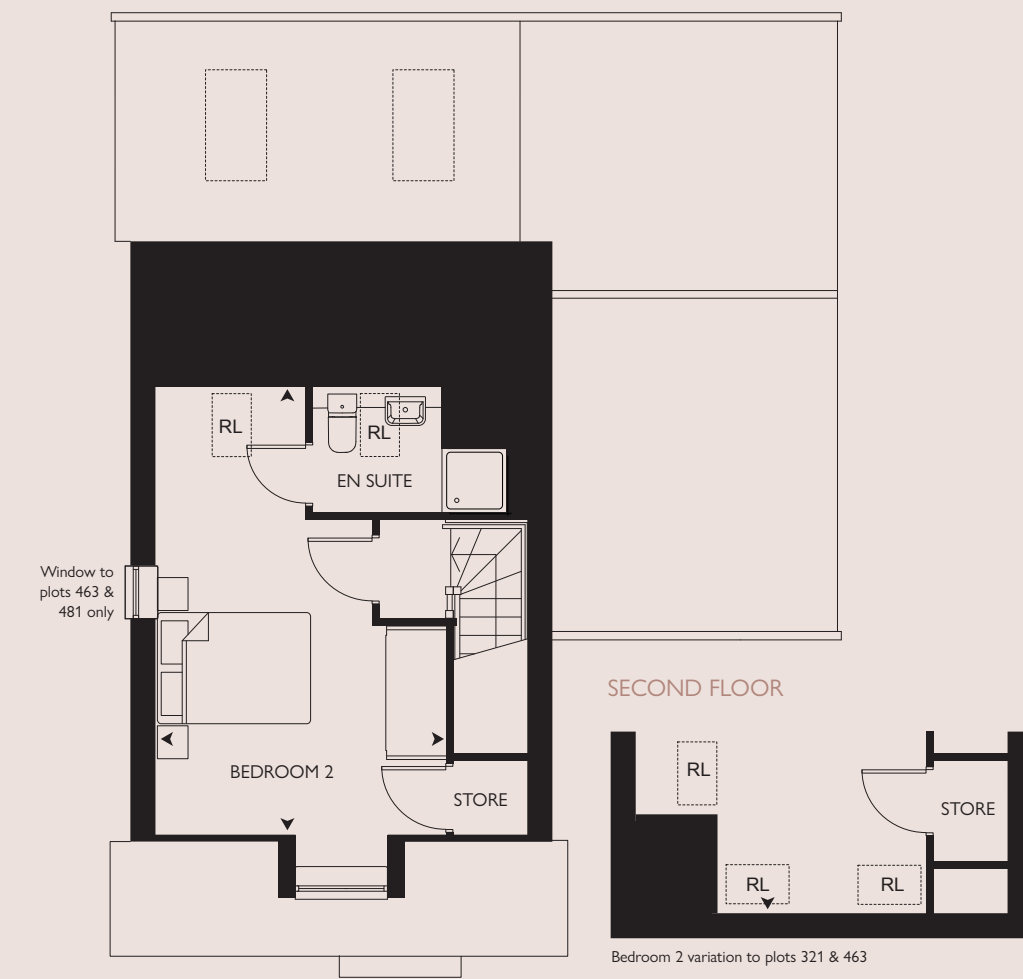
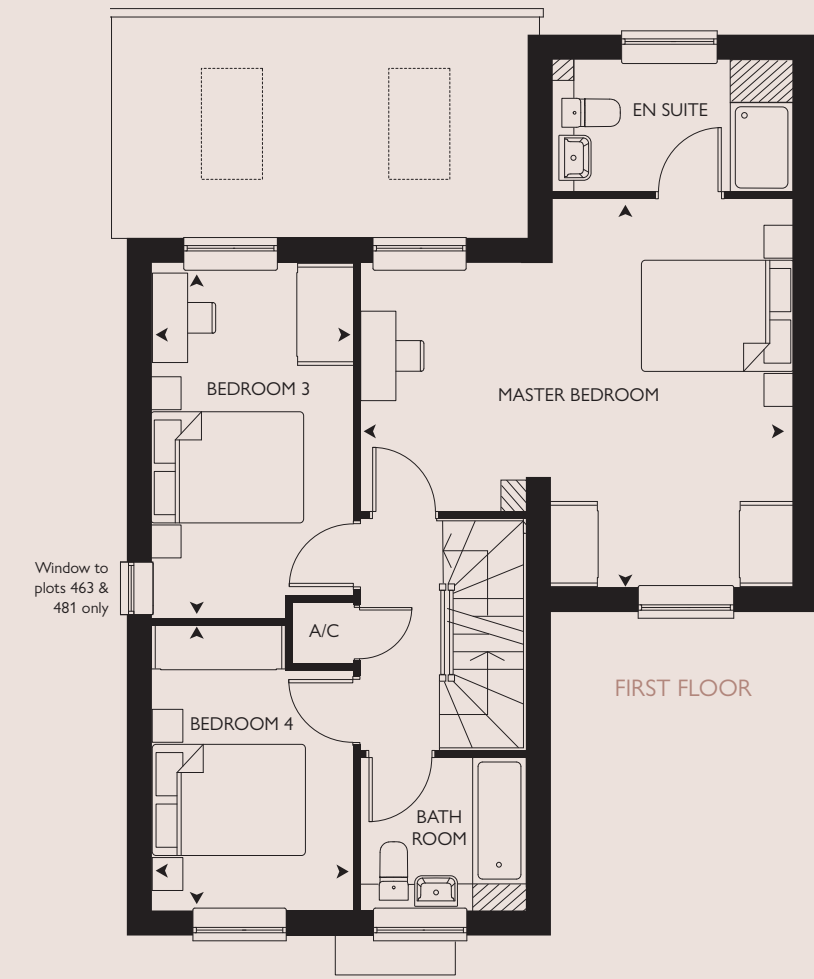
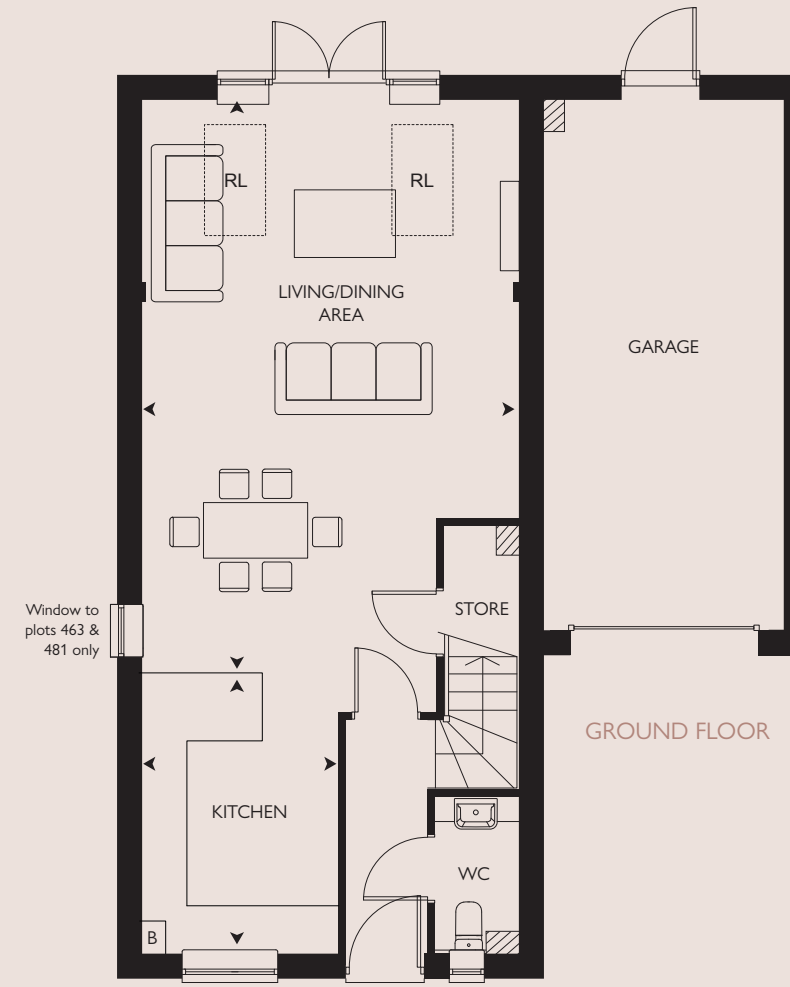
ParadigmLiving

COUNTRYSIDE  
Homes

# THE BLENHEIM

PLOTS 282, 305, 321, 463, 469 & 481

4 bedroom house



B = Boiler A/C = Airing cupboard RL = Roof light

All room sizes are approximate with maximum dimensions which have been taken into the kitchen units and are not intended for carpet sizes or items of furniture. All dimensions and areas listed are to finished measurements. Countryside operates a policy of continuous product development and all room layouts may be subject to minor modifications. Kitchen, bathroom and furniture layouts shown are indicative only. Please ask Sales Consultants for detailed information regarding specific properties.



St. Michael's Hurst  
BISHOP'S STORTFORD

## GROUND FLOOR

KITCHEN  
3.63m x 2.55m 11'11" x 8'3"

LIVING / DINING AREA  
7.58m x 4.90m 24'10" x 16'0"

## FIRST FLOOR

MASTER BEDROOM  
5.66m x 5.11m 18'6" x 16'9"

BEDROOM 3  
4.67m x 2.65m 15'4" x 8'8"

BEDROOM 4  
3.74m x 2.65m 12'3" x 8'8"

## SECOND FLOOR

BEDROOM 2  
5.91m x 3.79m 19'5" x 12'5"  
6.92m x 3.79m \* 22'8" x 12'5" \*

## OVERALL INTERNAL AREA

147.7 sq m 1590 sq ft  
150.0 sq m \* 1615 sq ft \*

\* Plots 321 & 463