

THE LAUREL

PLOT 472



St. Michael's Hurst

BISHOP'S STORTFORD

3 bedroom house

The Laurel boasts open plan accommodation to the ground floor, sweeping from the kitchen through the living/dining room and out to the garden beyond. Upstairs, the generous master bedroom benefits from its own en suite bathroom, while the third bedroom could become a cosy office. What's more, there is ample storage space to keep the home streamlined.

////// ParadigmLiving

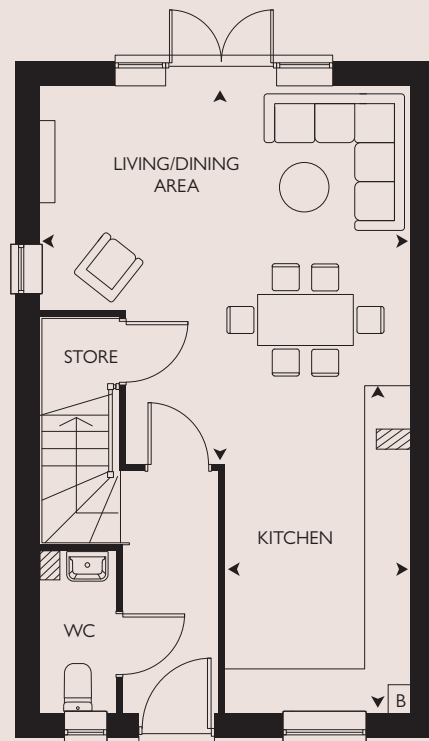

COUNTRYSIDE
Homes

Computer generated image of The Laurel plot 472. Building materials, design and landscaping may differ from those illustrated. We operate a policy of continual product development and individual features may vary. Please ask a Sales Consultant for further details. April 2023.

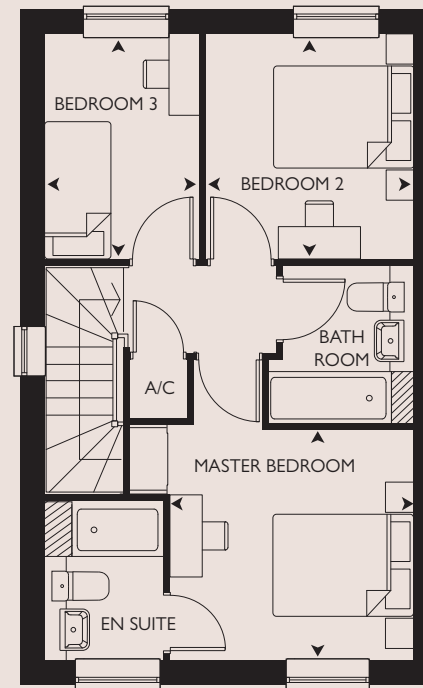
THE LAUREL

PLOT 472

3 bedroom house



GROUND FLOOR



FIRST FLOOR

B = Boiler A/C = Airing cupboard

All room sizes are approximate with maximum dimensions which have been taken into the kitchen units and are not intended for carpet sizes or items of furniture. All dimensions and areas listed are to finished measurements. Countryside operates a policy of continuous product development and all room layouts may be subject to minor modifications. Kitchen, bathroom and furniture layouts shown are indicative only. Please ask Sales Consultants for detailed information regarding specific properties.



St. Michael's Hurst

BISHOP'S STORTFORD

GROUND FLOOR

KITCHEN

4.41m x 2.46m

14'5" x 8'1"

LIVING / DINING AREA

5.10m x 4.95m

16'8" x 16'2"

FIRST FLOOR

MASTER BEDROOM

3.27m x 3.12m

10'9" x 10'3"

BEDROOM 2

3.00m x 2.78m

9'10" x 9'1"

BEDROOM 3

3.00m x 2.07m

9'10" x 6'9"

OVERALL INTERNAL AREA

83.6 sq m

900 sq ft