

# THE SKYLARK

PLOTS 280, 314, 315 & 468



St. Michael's Hurst  
BISHOP'S STORTFORD

## 3 bedroom house

A spacious entry hall welcomes you as you enter the Skylark. To your right is an expansive living room with double doors leading out to the garden, while an open plan kitchen/dining area can be found on your left. The ground floor also comprises a useful utility room and WC. Upstairs are three good-sized bedrooms, with the master benefitting from its own en suite bathroom.

Computer generated image of The Skylark plot 280. Building materials, design and landscaping may differ from those illustrated. We operate a policy of continual product development and individual features may vary. Please ask a Sales Consultant for further details. July 2023.

////// ParadigmLiving

  
COUNTRYSIDE  
Homes

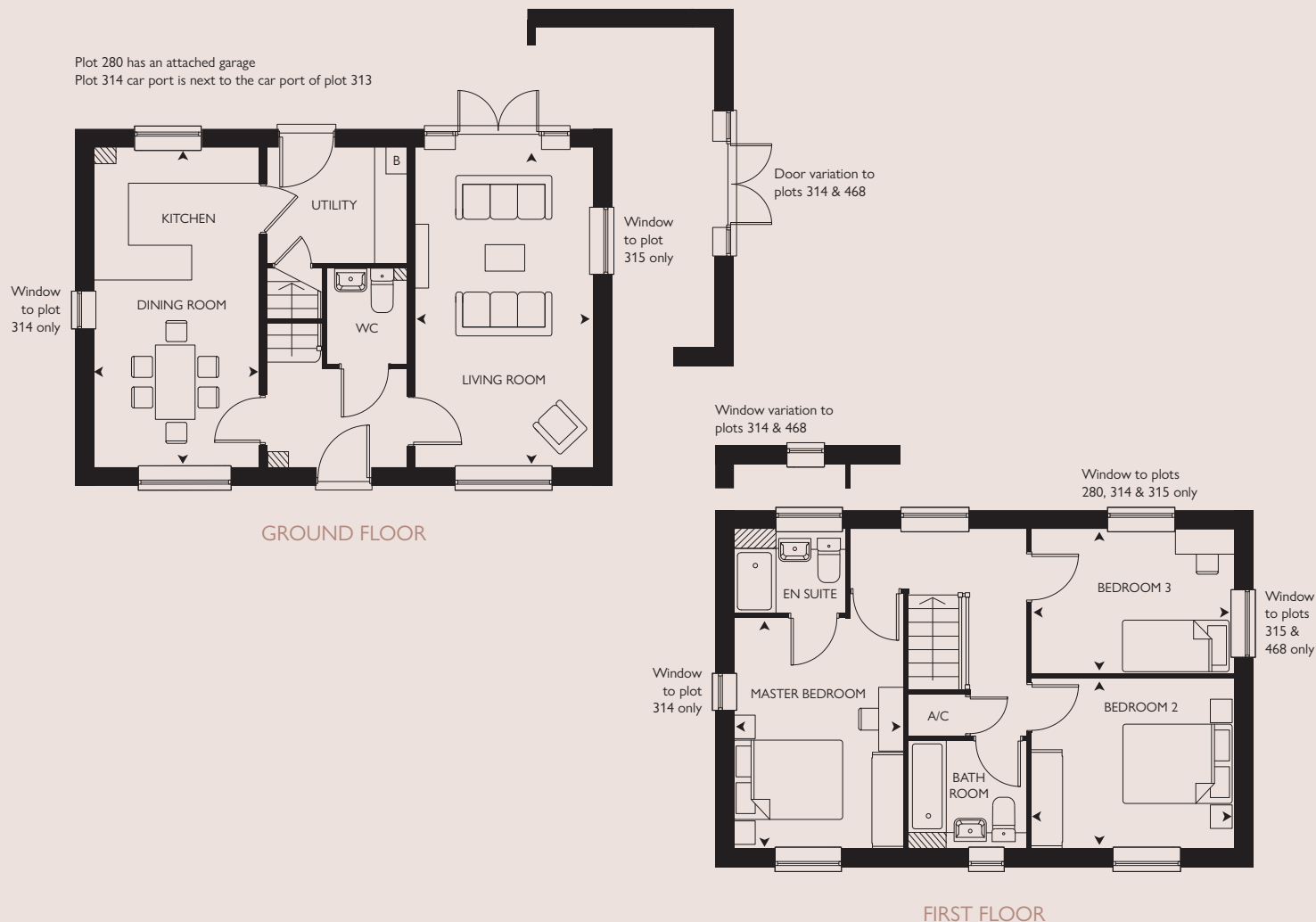
# THE SKYLARK

PLOTS 280, 314, 315 & 468

3 bedroom house

Plot 280 has an attached garage

Plot 314 car port is next to the car port of plot 313



B = Boiler A/C = Airing cupboard

All room sizes are approximate with maximum dimensions which have been taken into the kitchen units and are not intended for carpet sizes or items of furniture. All dimensions and areas listed are to finished measurements. Countryside operates a policy of continuous product development and all room layouts may be subject to minor modifications. Kitchen, bathroom and furniture layouts shown are indicative only. Please ask Sales Consultants for detailed information regarding specific properties.



St. Michael's Hurst

BISHOP'S STORTFORD

## GROUND FLOOR

### KITCHEN / DINING ROOM

5.87m x 3.08m 19'3" x 10'1"

### LIVING ROOM

5.87m x 3.30m 19'3" x 10'9"

## FIRST FLOOR

### MASTER BEDROOM

4.29m x 3.13m 14'1" x 10'3"

### BEDROOM 2

3.72m x 3.15m 12'2" x 10'4"

### BEDROOM 3

3.72m x 2.60m 12'2" x 8'8"

## OVERALL INTERNAL AREA

108.4 sq m 1166 sq ft