

# THE ELM

PLOTS 283, 391, 394, 398 & 466



St. Michael's Hurst  
BISHOP'S STORTFORD

## 5 bedroom house

The Elm is a five bedroom home which certainly has the wow factor. Set across three levels, striking bay windows add a charming touch to both the living room and dining room on the ground floor. Bedrooms four and five on the second floor provide a perfect sanctuary for teenagers, or a welcoming haven for visitors to stay. A garage and utility offer the utmost in convenience.

ParadigmLiving

COUNTRYSIDE  
Homes

ParadigmLiving

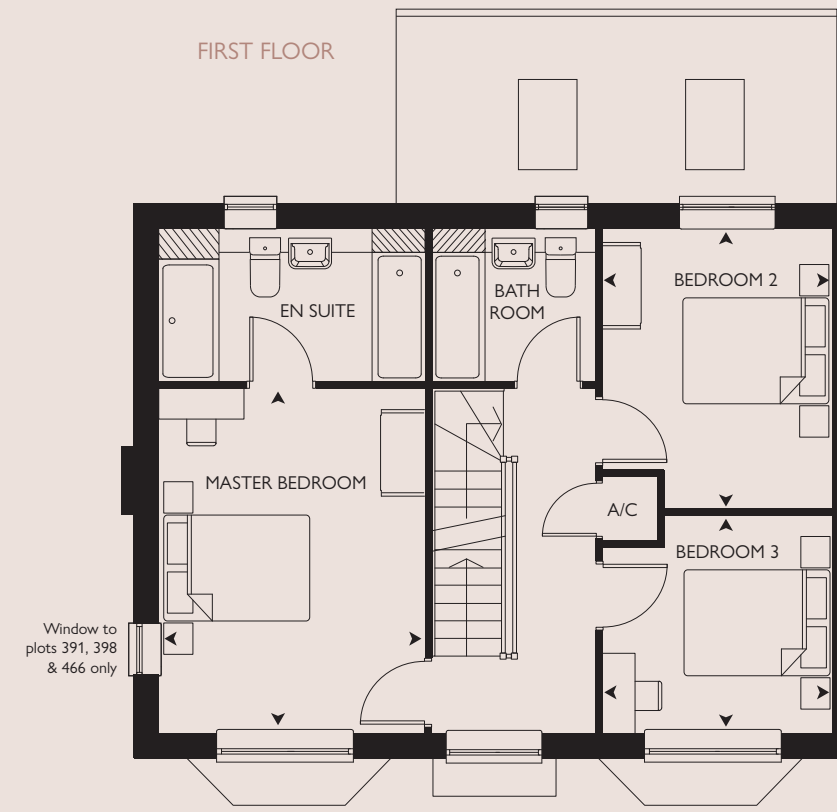
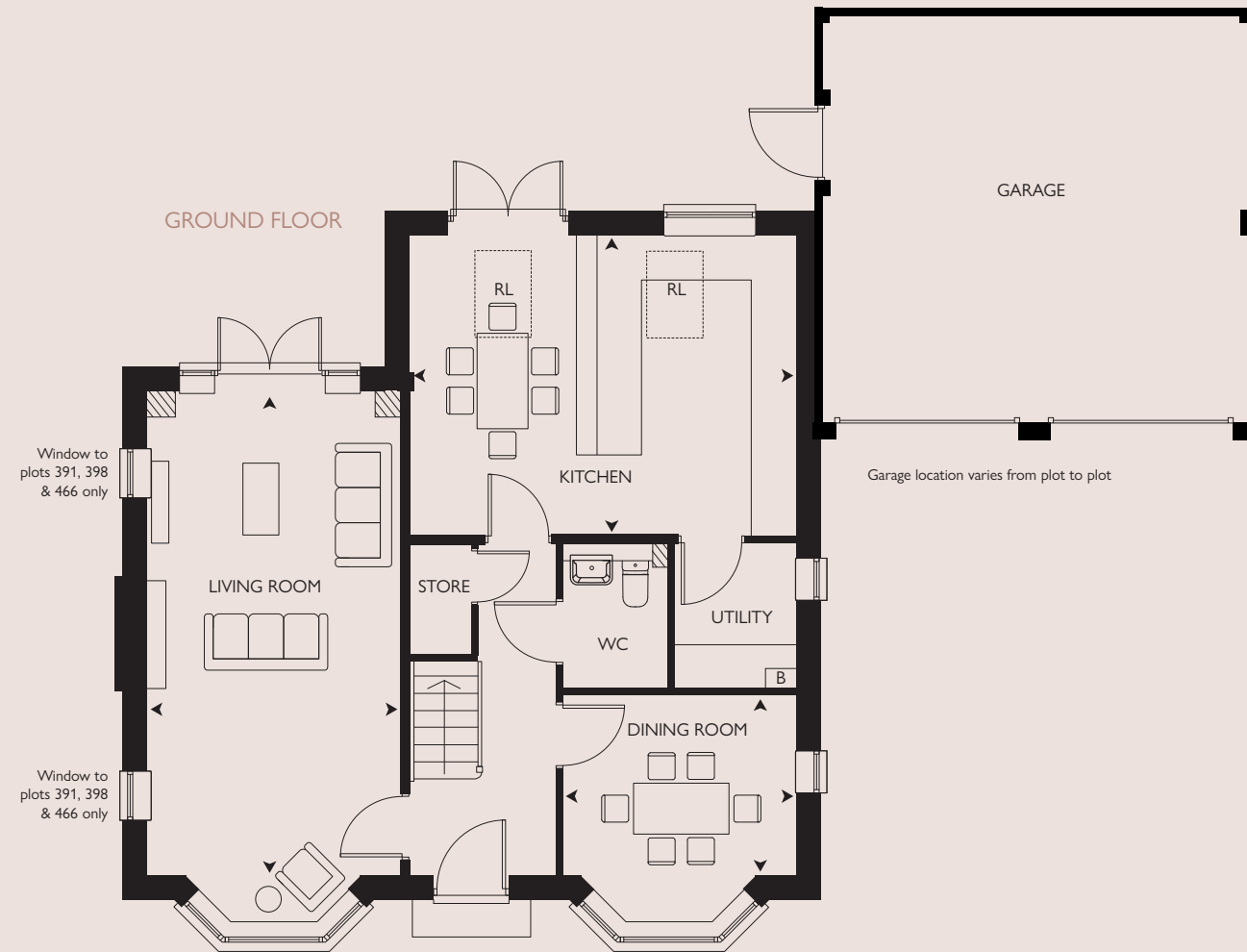
COUNTRYSIDE  
Homes

Computer generated image of The Elm plot 398. Building materials, design and landscaping may differ from those illustrated. We operate a policy of continual product development and individual features may vary. Please ask a Sales Consultant for further details. April 2023.

# THE ELM

PLOTS 283\*, 391, 394\*, 398 & 466\*

5 bedroom house



\* = Handed Plot B = Boiler A/C = Airing cupboard RL = Roof light

All room sizes are approximate with maximum dimensions which have been taken into the kitchen units and are not intended for carpet sizes or items of furniture. All dimensions and areas listed are to finished measurements. Countryside operates a policy of continuous product development and all room layouts may be subject to minor modifications. Kitchen, bathroom and furniture layouts shown are indicative only. Please ask Sales Consultants for detailed information regarding specific properties.



St. Michael's Hurst  
BISHOP'S STORTFORD

## GROUND FLOOR

KITCHEN  
5.24m x 4.08m 17'2" x 13'4"

DINING ROOM  
3.18m x 2.45m 10'5" x 8'0"

LIVING ROOM  
6.59m x 3.45m 21'7" x 11'3"

## FIRST FLOOR

MASTER BEDROOM  
4.50m x 3.50m 14'9" x 11'6"

BEDROOM 2  
3.67m x 3.00m 12'0" x 9'10"

BEDROOM 3  
3.00m x 2.83m 9'10" x 9'3"

## SECOND FLOOR

BEDROOM 4  
5.45m x 4.10m 17'10" x 13'5"

BEDROOM 5  
3.50m x 3.13m 11'6" x 10'3"

## OVERALL INTERNAL AREA

177.7 sq m 1913 sq ft