

# THE ROSEFINCH

PLOTS 281, 287, 288, 301, 402 & 479



## St. Michael's Hurst

BISHOP'S STORTFORD

### 4 bedroom house

With four bedrooms, there will be somewhere for all the family to call their own in the charming Rosefinch. The open plan living accommodation is easily adapted to your needs, whether that's hosting friends for dinner, catching up on a box set, or giving the kids a place to play.

**ParadigmLiving**



**COUNTRYSIDE**  
Homes

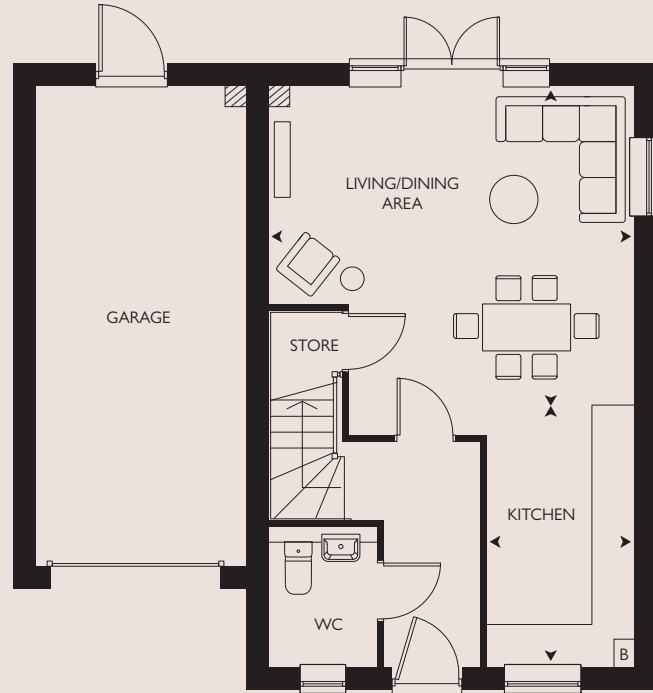
Computer generated image of The Rosefinch plot 402. Building materials, design and landscaping may differ from those illustrated. We operate a policy of continual product development and individual features may vary. Please ask a Sales Consultant for further details. July 2023.

# THE ROSEFINCH

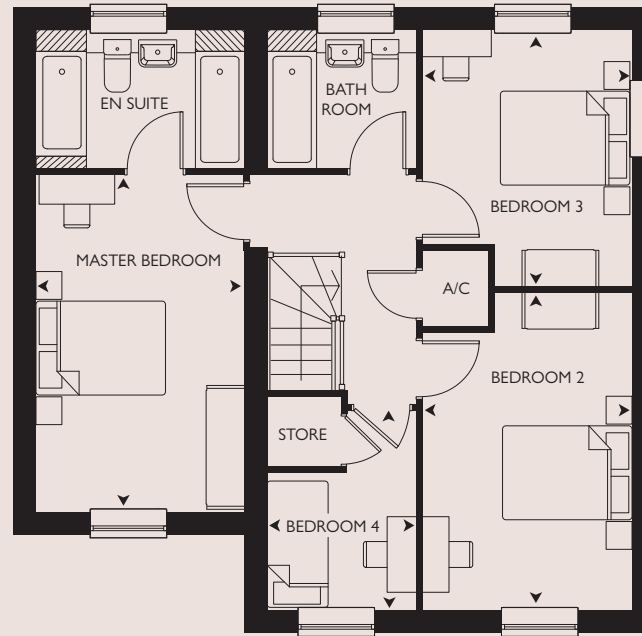
PLOTS 281\*, 287, 288, 301, 402 & 479

4 bedroom house

Car port replaces garage to plots  
281, 287, 288, 301 & 402



GROUND FLOOR



FIRST FLOOR

\* = Handed Plot B = Boiler A/C = Airing cupboard

All room sizes are approximate with maximum dimensions which have been taken into the kitchen units and are not intended for carpet sizes or items of furniture. All dimensions and areas listed are to finished measurements. Countryside operates a policy of continuous product development and all room layouts may be subject to minor modifications. Kitchen, bathroom and furniture layouts shown are indicative only. Please ask Sales Consultants for detailed information regarding specific properties.



St. Michael's Hurst  
BISHOP'S STORTFORD

## GROUND FLOOR

KITCHEN  
3.81m x 2.13m 12'6" x 7'0"

LIVING / DINING AREA  
5.30m x 4.63m 17'4" x 15'2"

## FIRST FLOOR

MASTER BEDROOM  
4.89m x 3.02m 16'0" x 9'10"

BEDROOM 2  
4.64m x 3.05m 15'2" x 10'0"

BEDROOM 3  
3.70m x 3.05m 12'1" x 10'0"

BEDROOM 4  
2.90m x 2.15m 9'6" x 7'0"

## OVERALL INTERNAL AREA

111.0 sq m 1195 sq ft