

THE WINCHESTER

PLOTS 302, 303, 307 & 308



St. Michael's Hurst
BISHOP'S STORTFORD

4 bedroom house

Set across three impressive floors, the Winchester is an outstanding four-bedroom family home. Its pièce de résistance is its roof terrace which spans the length of the property; this is the ideal spot for enjoying al fresco dining in the warmer months. There is also a large integral garage and a well-proportioned living/dining room to the first floor.

Computer generated image of The Winchester plots 302 & 303. Building materials, design and landscaping may differ from those illustrated. We operate a policy of continual product development and individual features may vary. Please ask a Sales Consultant for further details. April 2023.

ParadigmLiving



COUNTRYSIDE
Homes

ParadigmLiving

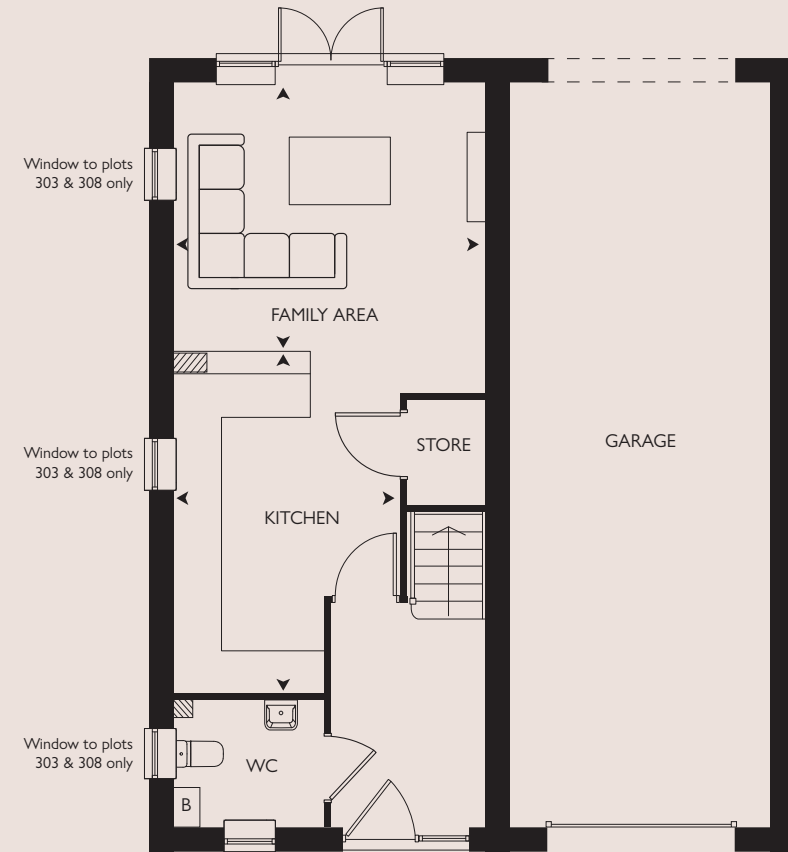


COUNTRYSIDE
Homes

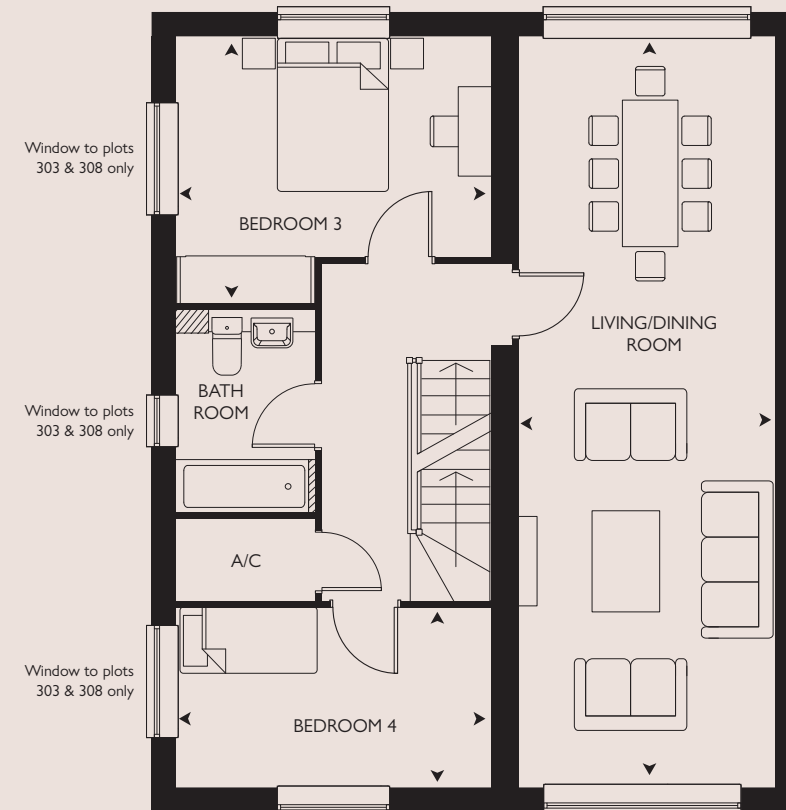
THE WINCHESTER

PLOTS 302*, 303, 307 & 308*

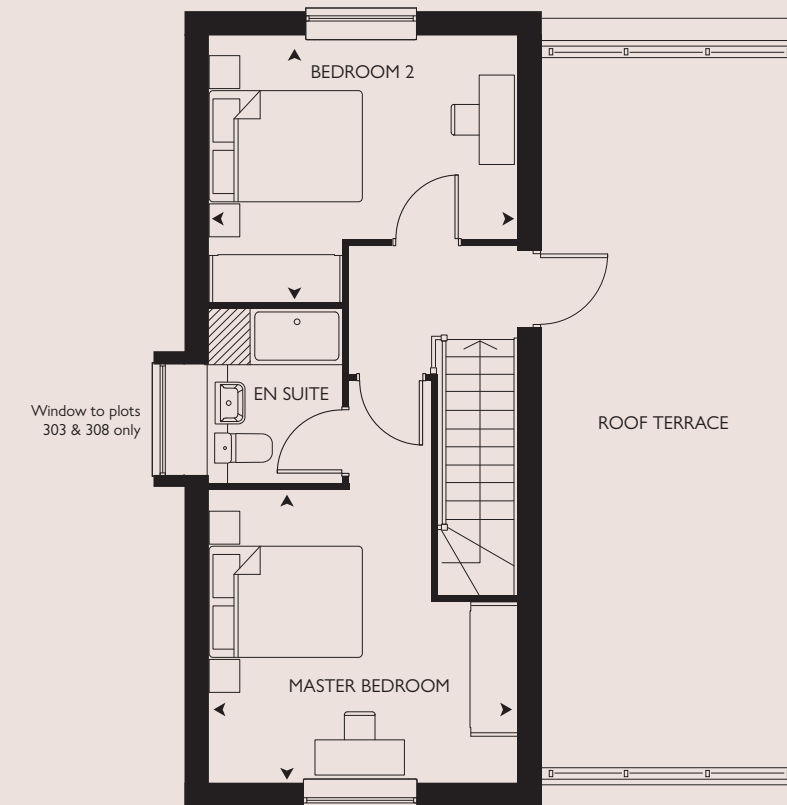
4 bedroom house



GROUND FLOOR



FIRST FLOOR



SECOND FLOOR

* = Handed Plot B = Boiler A/C = Airing cupboard

All room sizes are approximate with maximum dimensions which have been taken into the kitchen units and are not intended for carpet sizes or items of furniture. All dimensions and areas listed are to finished measurements. Countryside operates a policy of continuous product development and all room layouts may be subject to minor modifications. Kitchen, bathroom and furniture layouts shown are indicative only. Please ask Sales Consultants for detailed information regarding specific properties.



St. Michael's Hurst
BISHOP'S STORTFORD

GROUND FLOOR

KITCHEN
4.52m x 2.97m 14'10" x 9'9"

FAMILY AREA
4.07m x 4.06m 13'4" x 13'4"

FIRST FLOOR

LIVING / DINING ROOM
9.80m x 3.35m 32'2" x 10'11"

BEDROOM 3
4.06m x 3.46m 13'4" x 11'4"

BEDROOM 4
4.06m x 2.32m 13'4" x 7'5"

SECOND FLOOR

MASTER BEDROOM
4.06m x 3.82m 13'4" x 12'6"

BEDROOM 2
4.06m x 3.49m 13'4" x 11'6"

OVERALL INTERNAL AREA

153.0 sq m 1647 sq ft