

Blenheim Court, Hove

LEXTONS / SALES
LETTINGS
AUCTIONS
COMMERCIAL



About the property

****Guide Price £325,000 to £350,000 ****

Situated in the sought-after location of New Church Road in Hove, this charming ground floor two-bedroom flat is a gem waiting to be discovered. As you step into the property, you are greeted by a spacious hallway that sets the tone for the rest of the flat.

The property boasts a large south-facing lounge adorned with beautiful Parquet flooring, creating a warm and inviting atmosphere. Imagine enjoying your morning coffee on the private balcony, basking in the sunlight and taking in the fresh sea breeze.

With one reception room, two double bedrooms, and one bathroom, this flat offers the perfect space for comfortable living. The modern kitchen is ideal for whipping up delicious meals, and the gas central heating ensures you stay warm and snug during the colder months.

Convenience is key with parking available and the huge benefit of having a garage, making trips to the seaside or nearby amenities a breeze. Whether you're looking for a permanent residence or a holiday retreat, this property ticks all the boxes.

Don't miss out on the opportunity to make this flat your own and experience the best of Hove living. Book a viewing today and step into your new home on New Church Road.

Blenheim Court, New Hove



2

BEDROOM

1

RECEPTION

1

BATHROOM

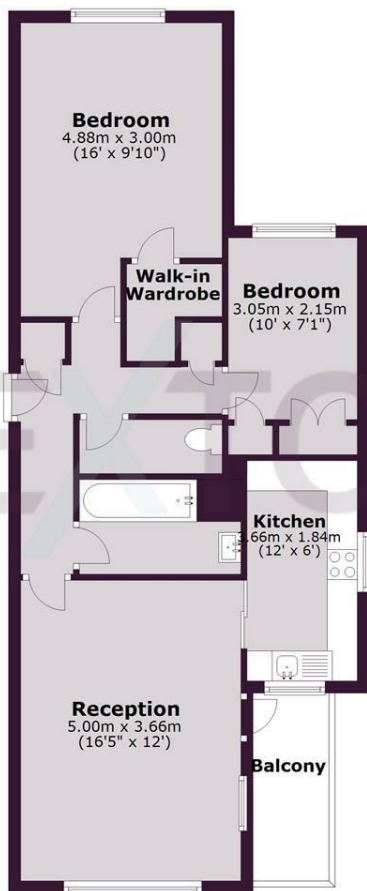




SCAN HERE TO OFFER ON THIS PROPERTY

Ground Floor

Approx. 65.4 sq. metres (703.7 sq. feet)



Total area: approx. 65.4 sq. metres (703.7 sq. feet)

Whilst every care has been taken to ensure accuracy, dimensions are approximate and for illustrative purposes only.

Created by Lextons. All rights reserved.

Energy Efficiency Rating		Current	Potential
Very energy efficient - lower running costs			
(92 plus) A			
(81-91) B			
(69-80) C		70	73
(55-68) D			
(39-54) E			
(21-38) F			
(1-20) G			
Not energy efficient - higher running costs			
England & Wales		EU Directive 2002/91/EC	