

# Palmeira Avenue

## Hove

**LEX**TONS /  
SALES  
LETTINGS  
AUCTIONS  
COMMERCIAL



## About the property

From the COMMUNAL ROOF TERRACE you look in to Sussex Cricket Ground. Located on the raised ground floor of a small and quiet purpose built block, is this newly decorated and carpeted, two double bedroom apartment in the very popular Palmeira Avenue Hove.

The flat has two good size bedrooms, a reception with wood flooring and private balcony, a kitchen with appliances and a bathroom with bath and shower.

The property is within easy walking distance of Hove Station and the shops of Church Road Hove. There is street parking available directly outside.

## Palmeira Avenue Hove

£1,700 Per month



2

BEDROOM

1

RECEPTION

1

BATHROOM



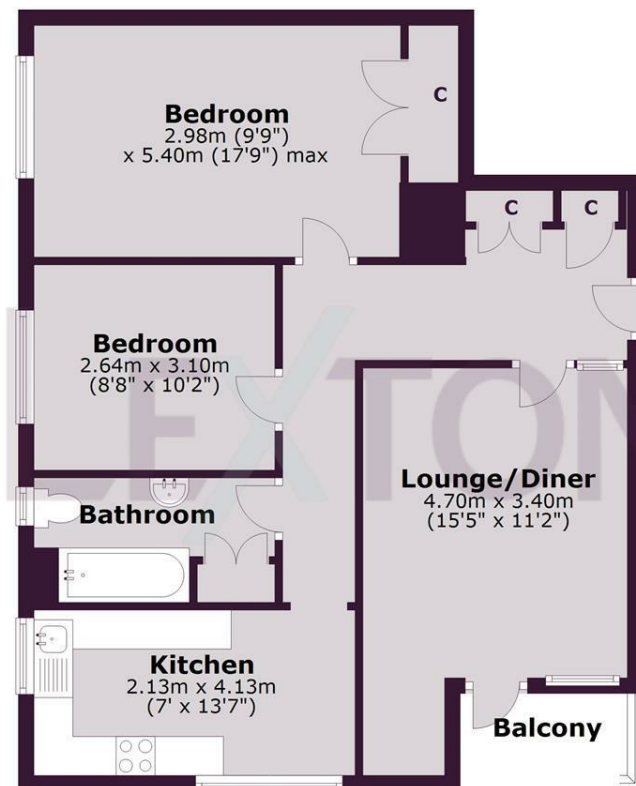




SCAN HERE TO VIEW ALL AVAILABLE PROPERTIES

## Ground Floor

Approx. 66.7 sq. metres (718.0 sq. feet)



Total area: approx. 66.7 sq. metres (718.0 sq. feet)

Whilst every care has been taken to ensure accuracy, dimensions are approximate and for illustrative purposes only.  
Created for exclusive use for Lextons. All rights reserved.  
Plan produced using PlanUp.

Energy Efficiency Rating		
	Current	Potential
Very energy efficient - lower running costs		
(92 plus) A		
(81-91) B		
(69-80) C	77	81
(55-68) D		
(39-54) E		
(21-38) F		
(1-20) G		
Not energy efficient - higher running costs		
England & Wales	EU Directive 2002/91/EC	