

Holland Road

Hove

LEXTONS /
SALES
LETTINGS
AUCTIONS
COMMERCIAL



About the property

A rare opportunity to rent a basement garden flat in the highly desirable Gwydyr Mansions, located just off Church Road in central Hove. This characterful property offers a studio-style living space with the added benefit of its own patio garden, making it ideal for those seeking outdoor space in a prime, central location.

The flat features a bright living/sleeping area with neutral décor, a separate kitchen and a modern bathroom. The standout feature is the patio garden,, which leads to well kept communal gardens, offering a peaceful spot for outdoor seating, pot plants, or simply enjoying some fresh air.

Just moments away, you'll find Hove's cafés, restaurants, shops, the seafront, and excellent transport connections, including Hove Station.

Holland Road Hove

£1,000 Per month



0

BEDROOM

1

RECEPTION

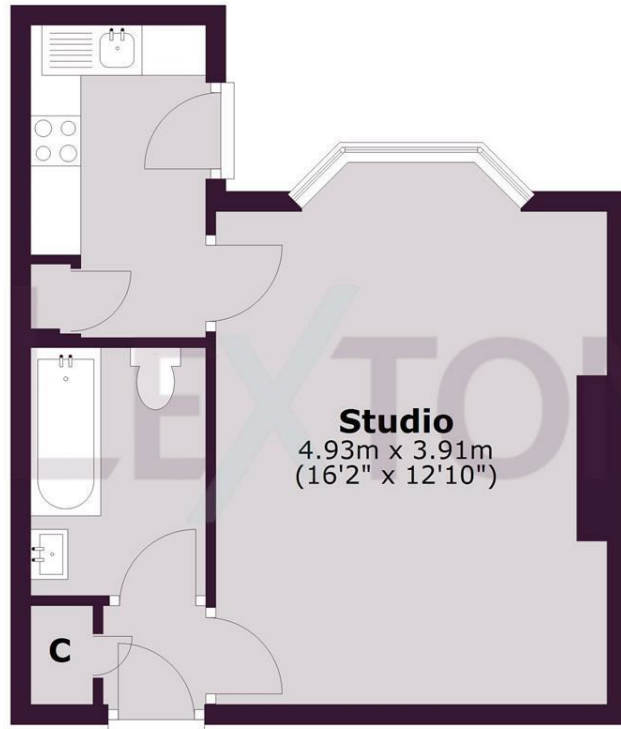
1

BATHROOM



Garden Floor

Approx. 31.9 sq. metres (343.5 sq. feet)



Studio
4.93m x 3.91m
(16'2" x 12'10")

Total area: approx. 31.9 sq. metres (343.5 sq. feet)

Whilst every care has been taken to ensure accuracy, dimensions are approximate and for illustrative purposes only.

Created for exclusive use for Lextons. All rights reserved.
Plan produced using PlanUp.

SCAN HERE TO VIEW ALL AVAILABLE PROPERTIES



Energy Efficiency Rating		
	Current	Potential
Very energy efficient - lower running costs		
(92 plus) A		
(81-91) B		
(69-80) C		
(55-68) D		
(39-54) E		
(21-38) F		
(1-20) G		
Not energy efficient - higher running costs		
England & Wales	EU Directive 2002/91/EC 