

Hartington Villas

Hove

LEXTONS / SALES
LETTINGS
AUCTIONS
COMMERCIAL



About the property

Situated close to Hove Station in a lovely Edwardian property, is this well presented first floor rear converted studio apartment.

The flat has the additional advantage of a separate kitchen with modern appliances, a good size studio room with built in wardrobes and a modern bathroom with bath and shower. The greenery of Hove park is a few minutes walk away. This property is offered on an unfurnished basis.

Dogs considered.

Hartington Villas Hove

£1,200 Per month



0

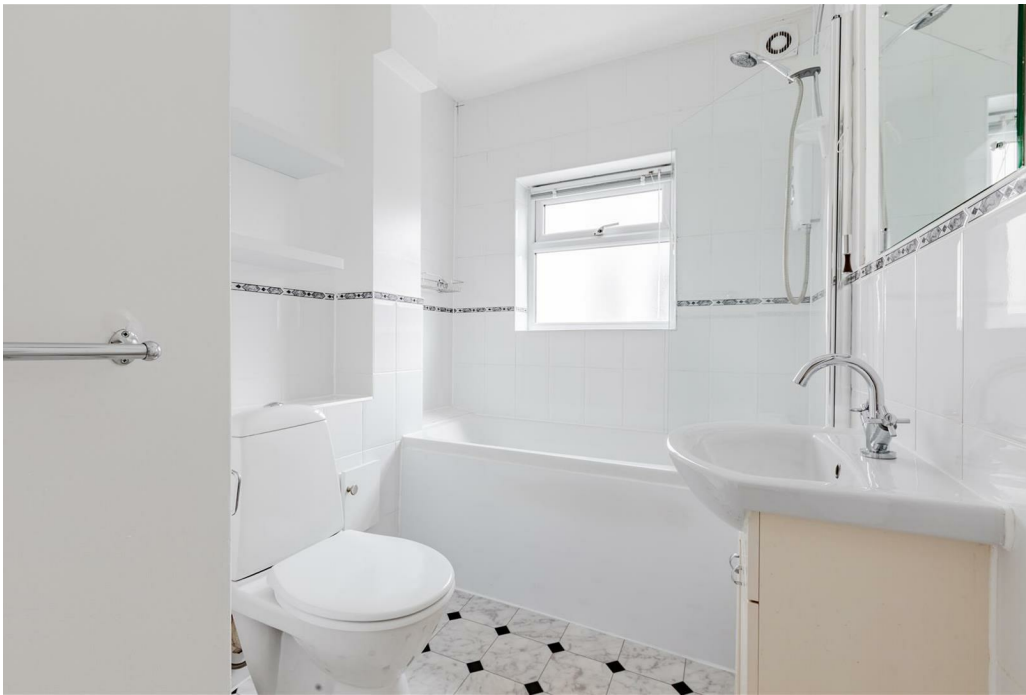
BEDROOM

1

RECEPTION

1

BATHROOM

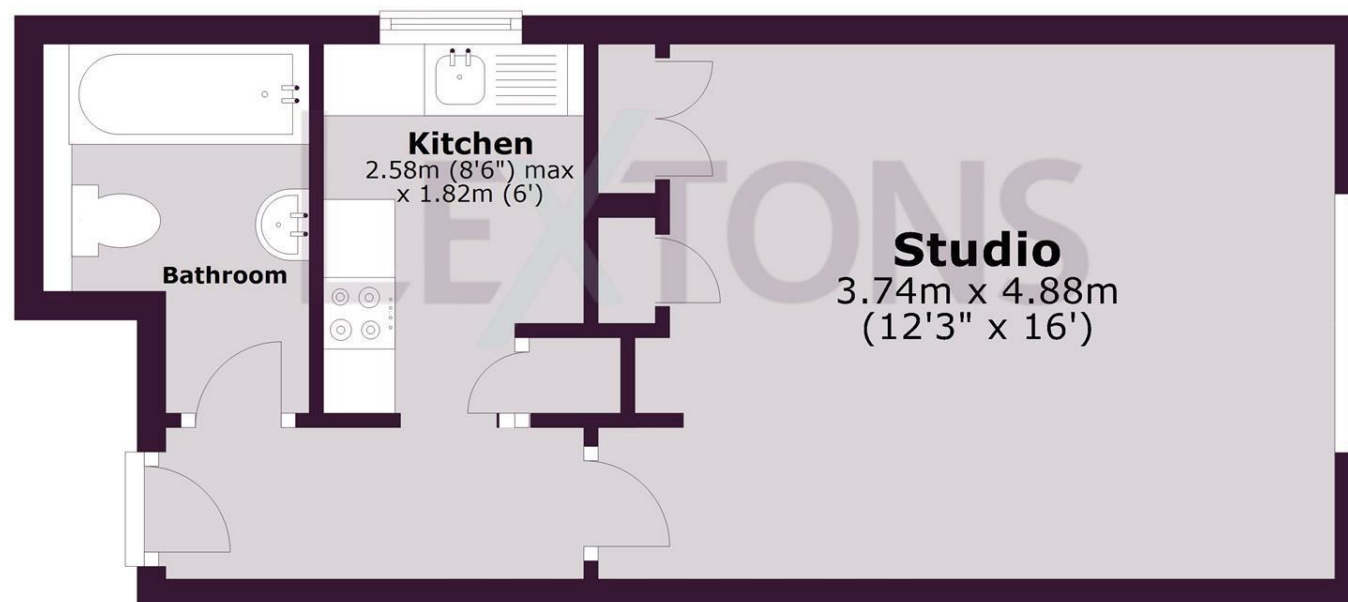


SCAN HERE TO VIEW ALL AVAILABLE PROPERTIES



First Floor

Approx. 32.1 sq. metres (345.7 sq. feet)



Total area: approx. 32.1 sq. metres (345.7 sq. feet)

Energy Efficiency Rating		
	Current	Potential
Very energy efficient - lower running costs		
(92 plus) A		
(81-91) B		
(69-80) C	71	76
(55-68) D		
(39-54) E		
(21-38) F		
(1-20) G		
Not energy efficient - higher running costs		
England & Wales	EU Directive 2002/91/EC	