

Marine Avenue

Hove

LEXTONS /
SALES
LETTINGS
AUCTIONS
COMMERCIAL



Marine Avenue Hove



3

BEDROOM

2

RECEPTION

2

BATHROOM

About the property

GUIDE PRICE £800,000 - £850,000

Set within the highly sought-after Hove Lagoon neighbourhood, this beautifully presented three double bedroom Victorian-era semi-detached house offering sea views to the front and a private rear garden with direct access to Wish Park — a truly rare and desirable feature. Moments from the beach and a short walk to local amenities, this South-facing home combines elegant period charm with contemporary comfort.

Step into a welcoming entrance hall leading to two generously sized reception rooms, the front featuring a large bay window that floods the space with natural light. To the rear, a spacious and stylish kitchen offers a seamless blend of modern living and period detail, with an original fireplace as a striking focal point. Large bi-fold doors open onto a beautifully landscaped and peaceful rear garden, perfect for entertaining or relaxing.

Upstairs, the first floor boasts a stunningly large family bathroom with a standalone bath, walk-in shower, and a bay window that enhances the sense of space and light. Two spacious double bedrooms occupy this level, including a superb principal bedroom to the front with built-in storage and sea views.

On the second floor, a glorious loft conversion creates a light-filled double bedroom with large Velux windows, sea views, and a private en suite shower room.

The rear garden is tranquil and enclosed by mature trees, with a gate opening directly into the open green space of Wish Park — ideal for families, dog walkers, or simply enjoying the outdoors.

Marine Avenue is a quiet residential street, enviably located between the seafront and Wish Park. Well-rated schools, Hove Lagoon's leisure facilities (tennis courts, skate park, children's playground, cafes, and even a beachfront sauna), and excellent transport links via nearby Portslade station make this a perfect home for families and co

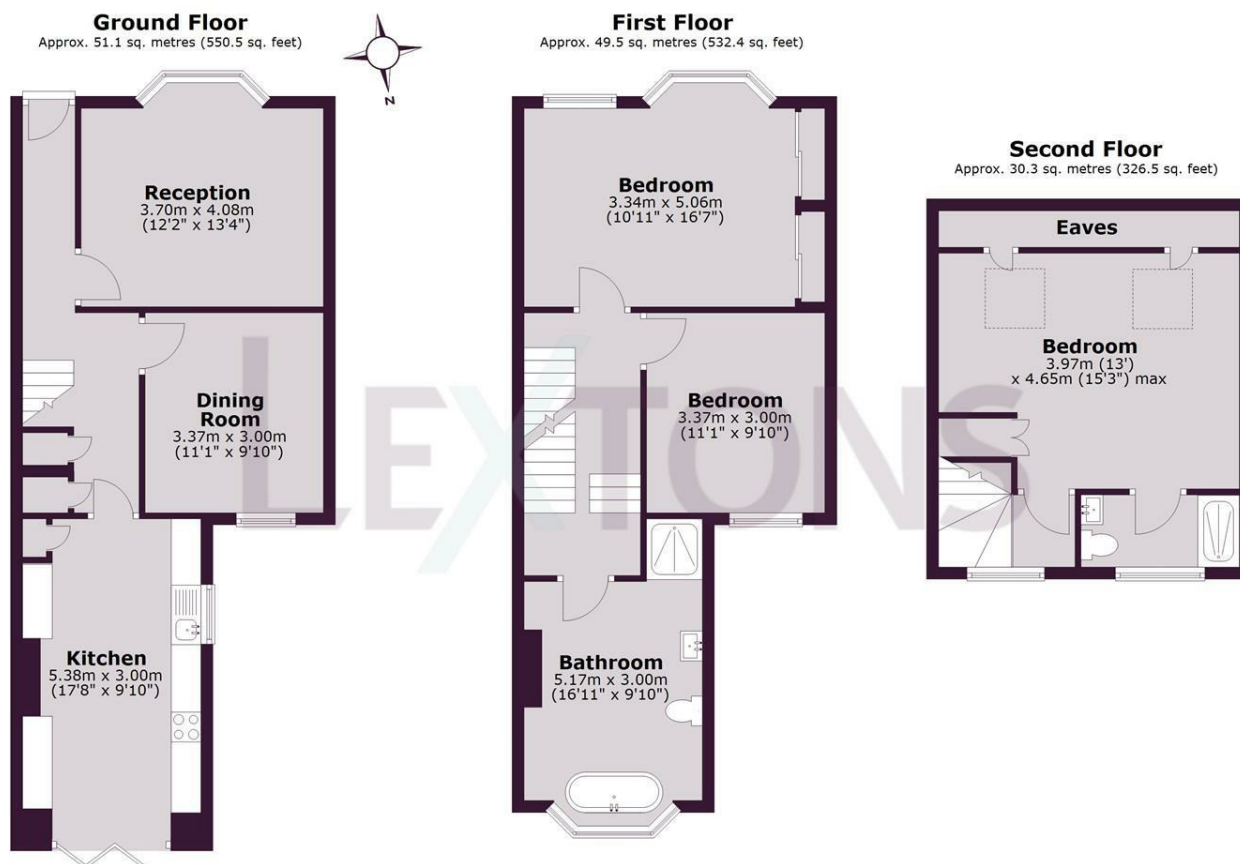








SCAN HERE TO OFFER ON THIS PROPERTY



Total area: approx. 130.9 sq. metres (1409.4 sq. feet)

Whilst every care has been taken to ensure accuracy, dimensions are approximate and for illustrative purposes only.
Created for exclusive use for Lextons. All rights reserved.
Plan produced using PlanUp.

Energy Efficiency Rating		
	Current	Potential
Very energy efficient - lower running costs		
(92 plus) A		86
(81-91) B		
(69-80) C		
(55-68) D	58	
(39-54) E		
(21-38) F		
(1-20) G		
Not energy efficient - higher running costs		
England & Wales		EU Directive 2002/91/EC

LEXTONS

Call our sales team to arrange
a viewing appointment:

01273 56 77 66

174 Church Road, Hove, BN3 2DJ
hovesales@lextons.co.uk | www.lextons.co.uk