

Lansdowne Place

Hove

LEXTONS /
SALES
LETTINGS
AUCTIONS
COMMERCIAL



About the property

A charming one-bedroom flat ideally located on Lansdowne Place, just a stone's throw from the seafront and Hove Lawns. This fantastic position offers easy access to the beach, local cafés, and shops, while Hove station is also within close reach —perfect for commuters or anyone wanting to make the most of everything Hove has to offer.

The property features a well-proportioned double bedroom, providing plenty of space for comfortable living. The separate kitchen is fitted with all white goods and offers a practical layout for cooking and storage. The bathroom includes a full-size bath, ideal for those who enjoy a relaxing soak.

Offered unfurnished, this flat is a great opportunity for anyone looking to settle in one of Hove's most desirable locations, moments from the coast and well connected to the city and beyond.

Lansdowne Place Hove

£1,300 Per month



1

BEDROOM

1

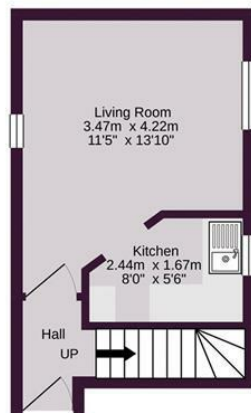
RECEPTION

1

BATHROOM



Ground Floor

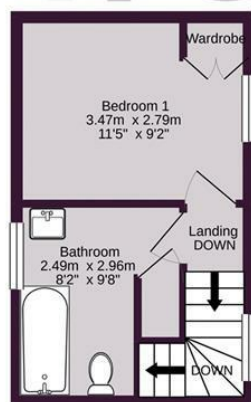


SCAN HERE TO VIEW ALL AVAILABLE PROPERTIES



LEXTONS

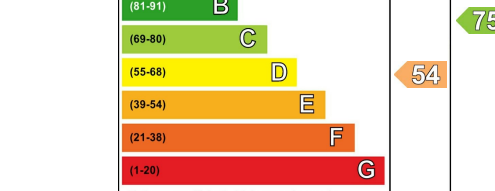
1st Floor



Approximate gross internal floor area (39.4 sq m/ 424 sq ft)

Whilst every care has been taken to ensure accuracy, dimensions are approximate and for illustrative purposes only.
Copyright Lextons 2020. All rights reserved.

Energy Efficiency Rating		
	Current	Potential
Very energy efficient - lower running costs		
(92 plus) A		
(81-91) B		
(69-80) C		
(55-68) D		
(39-54) E		
(21-38) F		
(1-20) G		
Not energy efficient - higher running costs		
England & Wales		
EU Directive 2002/91/EC		



LEXTONS

Call our lettings team to arrange
a viewing appointment:

01273 56 77 66

174 Church Road, Hove, BN3 2DJ
lettings@lextons.co.uk | www.lextons.co.uk