

Marine Avenue

Hove

LEXTONS /
SALES
LETTINGS
AUCTIONS
COMMERCIAL



Marine Avenue Hove

£4,000 Per month



4

BEDROOM

2

RECEPTION

2

BATHROOM

About the property

This beautifully refurbished four-bedroom terraced house in Hove offers a blend of period charm and modern living, just moments from the seafront and boasting sea views. Entering the ground floor, you're welcomed into a spacious, open-plan living and dining area flooded with natural light from large bay windows. With original wooden flooring, a working fireplace, and elegant features throughout, this space is both cosy and sophisticated, perfect for relaxing or entertaining. The living area opens onto a patio garden, providing a seamless indoor-outdoor flow and an inviting space to enjoy the warmer months.

Towards the rear, a large kitchen awaits, complete with ample space for a dining table, creating a family-friendly and functional area. A pantry with plumbing for a washing machine and additional storage is conveniently tucked away, keeping the main space clutter-free. Through the kitchen, there's direct access to the patio garden, which leads directly to Wish Park, making this an ideal choice for families or those who enjoy the outdoors.

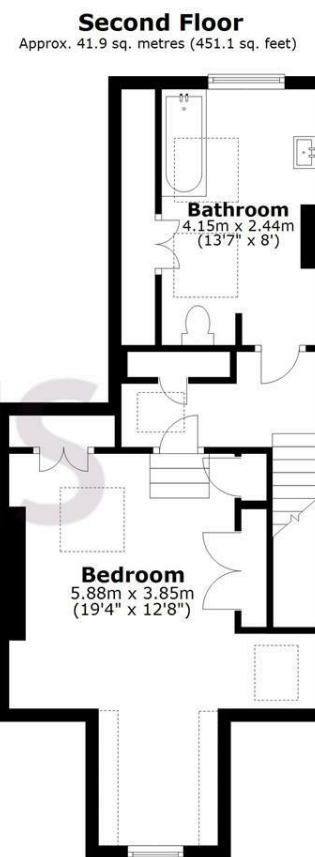
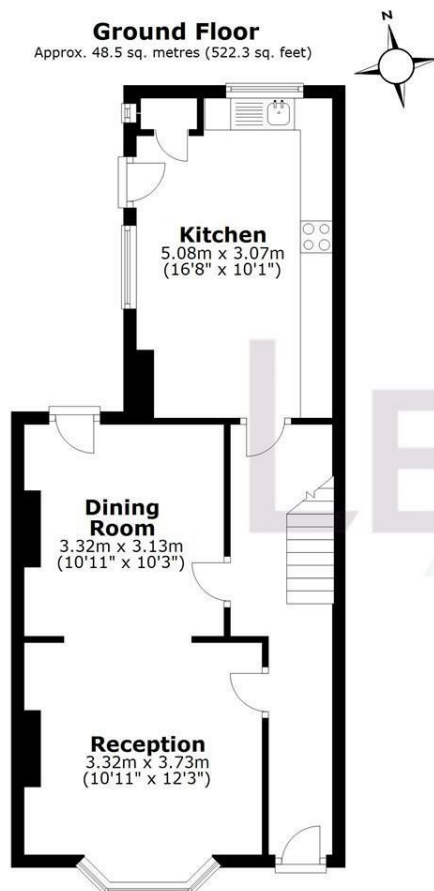
The first floor features three well-proportioned bedrooms, including two spacious doubles and a comfortable regular double. There is a modern shower room on this level, offering convenience and privacy. On the top floor, the eaves room benefits from generous storage options, including fitted wardrobes, while the velux windows allow for a bright and airy atmosphere. A bathroom on this floor completes the accommodation, adding to the practicality of this thoughtfully designed home.

Additional benefits include gas central heating throughout, and the entire property has been meticulously refurbished to offer a stylish, comfortable, and efficient living space in an exceptional coastal location.





SCAN HERE TO VIEW ALL AVAILABLE PROPERTIES



Total area: approx. 139.7 sq. metres (1503.5 sq. feet)

