

# Westbourne Place

## Hove

**LEX**TONS /  
SALES  
LETTINGS  
AUCTIONS  
COMMERCIAL



# Westbourne Place Hove

£1,250 Per month



1

BEDROOM

1

RECEPTION

1

BATHROOM

## About the property

Tucked away on a peaceful, hidden road in the heart of central Hove, this charming one-bedroom split-level apartment spans the ground and lower ground floors and boasts its own private entrance, offering both privacy and a spacious feel.

Upon entering, you'll find a generous eat-in kitchen to your left, fully equipped with essential appliances including a washing machine, fridge-freezer, electric hob, oven, and grill. The bright, south-facing living room features a characterful fireplace and stylish newly laid wooden-style flooring, creating a warm and inviting atmosphere.

Downstairs, the lower ground floor hosts a large double bedroom complete with a walk-in wardrobe, while a well-presented shower room is conveniently located on the ground floor.

Ideally situated on Westbourne Place, the property is just moments from the vibrant selection of shops, cafés, restaurants, and wine bars along Church Road, and within easy walking distance of Hove mainline station.







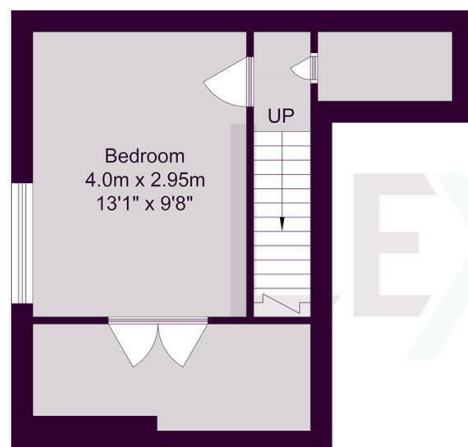




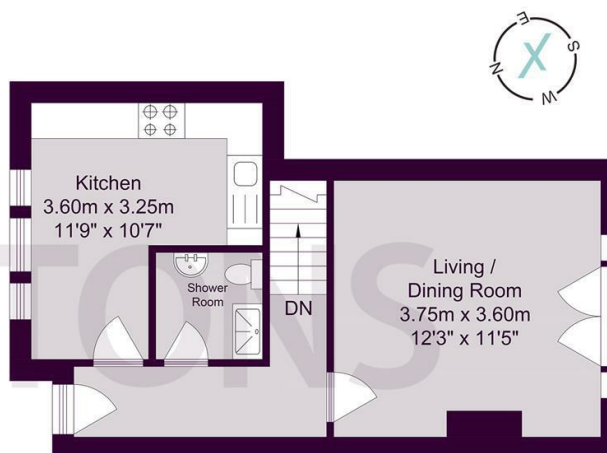
SCAN HERE TO VIEW ALL AVAILABLE PROPERTIES



Lower Ground Floor



Ground Floor



Approximate gross Internal floor Area 55.46 sq m/ 596.96 sq ft

Whilst every care has been taken to ensure accuracy, dimensions are approximate and for illustrative purposes only.

Energy Efficiency Rating		
	Current	Potential
Very energy efficient - lower running costs		
(92 plus) <b>A</b>		<b>75</b>
(81-91) <b>B</b>		
(69-80) <b>C</b>		
(55-68) <b>D</b>		
(39-54) <b>E</b>	<b>40</b>	
(21-38) <b>F</b>		
(1-20) <b>G</b>		
Not energy efficient - higher running costs		
England & Wales		EU Directive 2002/91/EC 