

1, Wilbury Avenue

Hove

LEXTONS /
SALES
LETTINGS
AUCTIONS
COMMERCIAL



1, Wilbury Avenue Hove

£250,000



1

BEDROOM

1

RECEPTION

1

BATHROOM

About the property

Guide Price £250,000 - £275,000

Charming One-Bedroom Ground Floor Apartment in Prime Hove Location

An excellent opportunity to acquire an elegant one-bedroom ground floor apartment boasting period charm, set within one of Hove's most desirable residential areas.

The property features a generous reception room with a grand high ceiling and a large south-facing bay window that floods the space with natural light. The double bedroom is equally impressive, boasting high ceilings and ample proportions. A private west-facing garden area provides a delightful outdoor suntrap — perfect for relaxing or entertaining.

Offering a blank canvas, this apartment presents an exciting opportunity for modernisation and restoration to suit your personal style.

Ideally positioned within an elegant period building, just moments from a charming parade of independent shops including a bakery, coffee shop, grocer, and general store. Hove railway station is only minutes away, with Hove Church Street, the seafront, Hove Park, and Goldstone Retail Park all within easy walking distance.

A perfect project for those looking to create a beautiful home in a sought-after location.





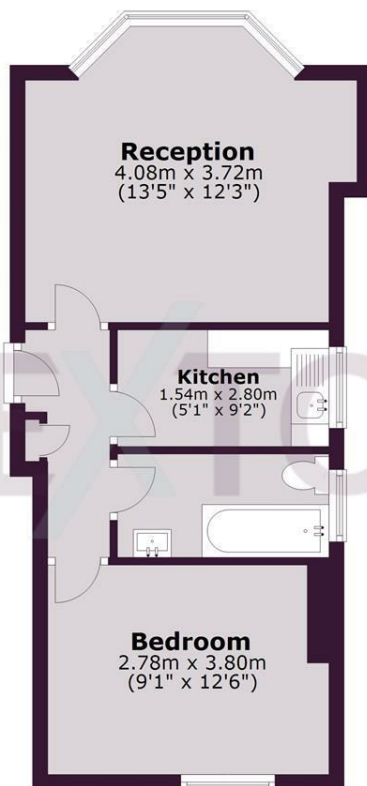




SCAN HERE TO OFFER ON THIS PROPERTY

Ground Floor

Approx. 34.6 sq. metres (372.6 sq. feet)



Total area: approx. 34.6 sq. metres (372.6 sq. feet)

Whilst every care has been taken to ensure accuracy, dimensions are approximate and for illustrative purposes only.
Created for exclusive use for Lextons. All rights reserved.
Plan produced using PlanUp.

Energy Efficiency Rating		
	Current	Potential
Very energy efficient - lower running costs		
(92 plus) A		
(81-91) B		
(69-80) C		
(55-68) D		
(39-54) E		
(21-38) F		
(1-20) G		
Not energy efficient - higher running costs		
62		74
England & Wales		EU Directive 2002/91/EC