

Old Steine

Brighton



About the property

STUDENTS ACCEPTED! Nestled in the heart of Old Steine, Brighton, this exquisite two-bedroom, two-bathroom apartment is a true gem waiting to be discovered. Set within the historic former Royal York Buildings dating back to 1819, this Grade II listed property offers a unique blend of contemporary living and rich history.

As you step inside, you'll be captivated by the spacious layout and abundance of natural light that fills the double-height living area. The main bedroom is a mezzanine style, with an en-suite and access to the roof terrace. The second bedroom offers plenty of space for large furniture.

One of the highlights of this property is the roof terrace, providing a tranquil space to relax and soak in the stunning views of Brighton Seafront.

For commuters, the convenience of Brighton railway station being just 15 minutes away is unbeatable, offering swift connections to London, Gatwick, and other coastal destinations. With excellent public transport options and taxi ranks nearby, getting around the city is a breeze.

Old Steine Brighton

£2,100 Per month



2

BEDROOM

1

RECEPTION

2

BATHROOM

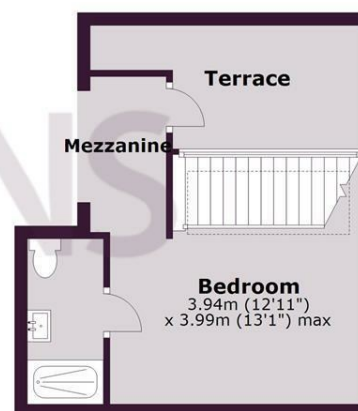


SCAN HERE TO VIEW ALL AVAILABLE PROPERTIES



Fourth Floor

Approx. 86.1 sq. metres (926.4 sq. feet)



Total area: approx. 86.1 sq. metres (926.4 sq. feet)

Energy Efficiency Rating		
	Current	Potential
Very energy efficient - lower running costs		
(92 plus) A		
(81-91) B		
(69-80) C		
(55-68) D		
(39-54) E		
(21-38) F		
(1-20) G		
Not energy efficient - higher running costs		
England & Wales	EU Directive 2002/91/EC 