

# Hawthorn Close

## Brighton

**LEXTONS** / SALES  
LETTINGS  
AUCTIONS  
COMMERCIAL



## About the property

GUIDE £550,000-£600,000

Positioned in a quiet close in the coveted Saltdean area, this exceptional 4/5-bedroom link-detached home exudes elegance and sophistication, offering a perfect blend of luxury, space, and functionality. Generous proportions and thoughtfully designed interiors, this home is ideally suited for modern family living, creating a comfortable and inspiring space. The heart of the home features expansive, light-filled living areas with tasteful, recent renovations that bring a fresh, contemporary feel throughout. Large windows, and a carefully chosen colour palette enhance the home's inviting, airy ambiance, open spaces that are perfect for family gatherings and entertaining. The large, well appointed kitchen features modern appliances with a useful utility space, all overlooking the garden. The property's outdoor space is equally impressive. Accessed from either the kitchen or a comfortable conservatory, the large, well kept garden is a private sanctuary with mature planting and trees, adding a sense of seclusion and tranquility. A spacious garden shed provides ample storage while a garage and driveway provide convenient parking options.

Inside, every room has been finished to a high standard, showcasing contemporary style with sleek finishes and refined details. Each bathroom has been elegantly appointed, featuring high-quality fittings that provide a sense of luxury and ease. The layout allows for flexibility, with either four or five bedrooms depending on your needs, making it easy to accommodate guests, create a home office, or provide additional family space.

This stand out property is a rare find, combining stylish aesthetics with practical features situated in a desirable area of Saltdean, with Saltdean Park, Lido and the beach all in close walking distance. For families seeking a home that offers both charm and convenience, this property represents an outstanding opportunity in a peaceful yet well-connected location

# Hawthorn Close Brighton

£550,000



5

BEDROOM

2

RECEPTION

2

BATHROOM

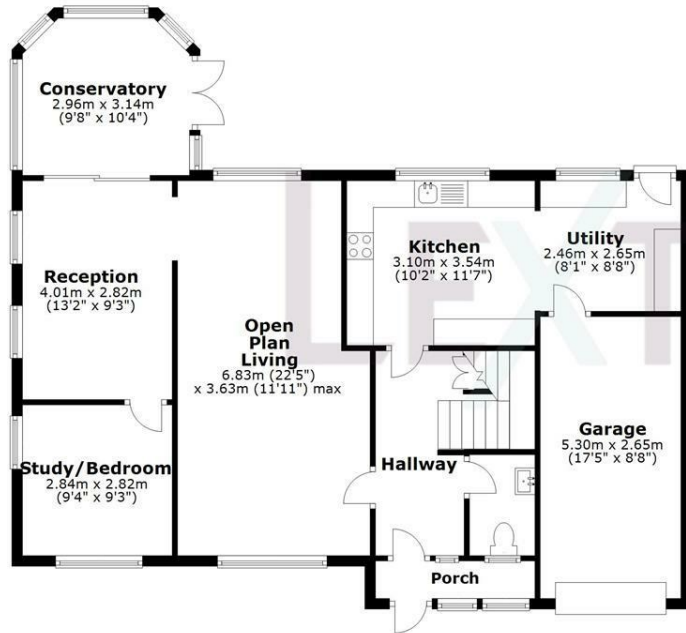


SCAN HERE TO OFFER ON THIS PROPERTY



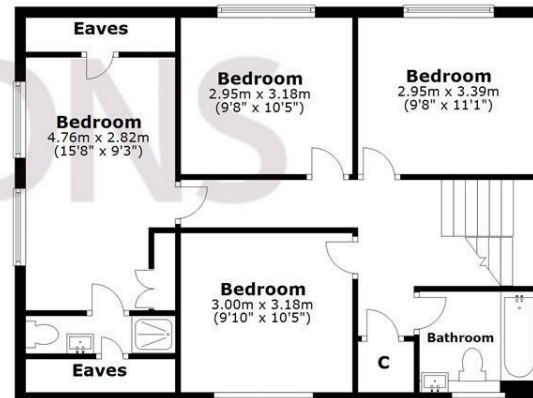
**Ground Floor**

Approx. 101.2 sq. metres (1089.2 sq. feet)



**First Floor**

Approx. 68.0 sq. metres (732.2 sq. feet)



Total area: approx. 169.2 sq. metres (1821.4 sq. feet)

Whilst every care has been taken to ensure accuracy, dimensions are approximate and for illustrative purposes only.

Created by Lextons. All rights reserved.

Energy Efficiency Rating		Current	Potential
Very energy efficient - lower running costs			
(92 plus) <b>A</b>			92
(81-91) <b>B</b>		82	
(69-80) <b>C</b>			
(55-68) <b>D</b>			
(39-54) <b>E</b>			
(21-38) <b>F</b>			
(1-20) <b>G</b>			
Not energy efficient - higher running costs			
<b>England &amp; Wales</b>		EU Directive 2002/91/EC	