

Roundhill Crescent

Brighton

LEXTONS /
SALES
LETTINGS
AUCTIONS
COMMERCIAL



About the property

Guide Price £650,000 - £700,000

An extremely spacious end of terrace house arranged over four floors, creating a comfortable and versatile family home.

The property comprises two reception rooms, conservatory perfect for dining, a large kitchen with utility room, separate WC, family bathroom and four good sized double bedrooms, one with an en suite shower room. Period features are prevalent throughout the house including high ceilings, feature fireplaces and original wood flooring.

The property benefits from off street parking for multiple vehicles and a large corner plot garden which takes full advantage of the favoured southerly aspect.

Roundhill Crescent is situated a very popular location, close to a huge array of local shops including the popular North Laine Shopping District and cafés. The highly regarded Downs Junior and Infants school and London Road train station are also within easy reach.

Roundhill Crescent Brighton



4

BEDROOM

2

RECEPTION

2

BATHROOM





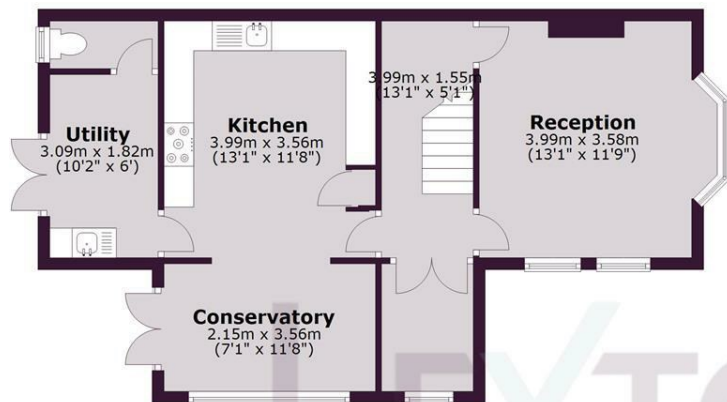




SCAN HERE TO OFFER ON THIS PROPERTY

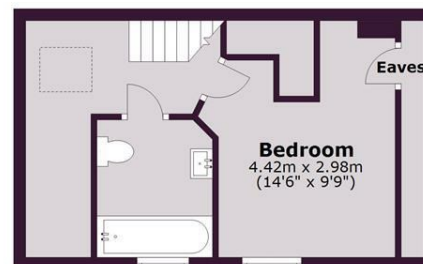
Ground Floor

Approx. 55.1 sq. metres (593.3 sq. feet)



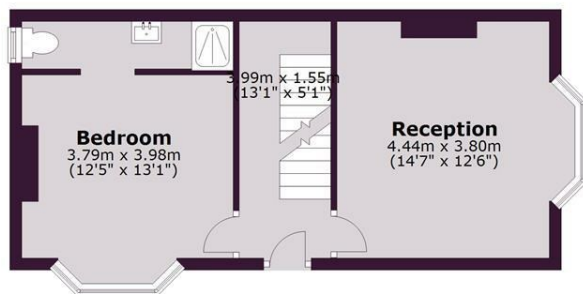
Third Floor

Approx. 26.8 sq. metres (288.8 sq. feet)



First Floor

Approx. 36.0 sq. metres (387.2 sq. feet)



Second Floor

Approx. 36.0 sq. metres (387.2 sq. feet)



Total area: approx. 153.9 sq. metres (1656.5 sq. feet)

Energy Efficiency Rating		Current	Potential
Very energy efficient - lower running costs			
(92 plus)	A		
(81-91)	B		
(69-80)	C		
(55-68)	D		
(39-54)	E		
(21-38)	F		
(1-20)	G		
Not energy efficient - higher running costs			
England & Wales		45	73
EU Directive 2002/91/EC			

LEXTONS

Call our sales team to arrange a viewing appointment:

01273 56 77 66

174 Church Road, Hove, BN3 2DJ
hovesales@lextons.co.uk | www.lextons.co.uk