

Norton Road

Hove

LEXTONS / SALES
LETTINGS
AUCTIONS
COMMERCIAL



Norton Road Hove

£375,000



2

BEDROOM

1

RECEPTION

1

BATHROOM

About the property

Guide price £375,000-£400,000

Situated on a beautiful tree-lined avenue, this characterful two double bedroom property offers period charm within generously proportioned accommodation.

Located on the raised ground floor, the entrance hallway leads to the expansive reception room found to the front of the property with its large bay window flooding the space with natural light. The high ceilings add to the bright and airy ambiance with an original fireplace complimenting the overall elegance. A well appointed kitchen is found to the rear of the reception offering the perfect space for socialising and entertaining.

The bedrooms are found off the large hallway, thoughtfully spaced out to maximise privacy and comfort, both being good sizes with large windows looking out across gardens to the rear. An attractive, modern and well proportioned bathroom is found off the hallway between the bedrooms.

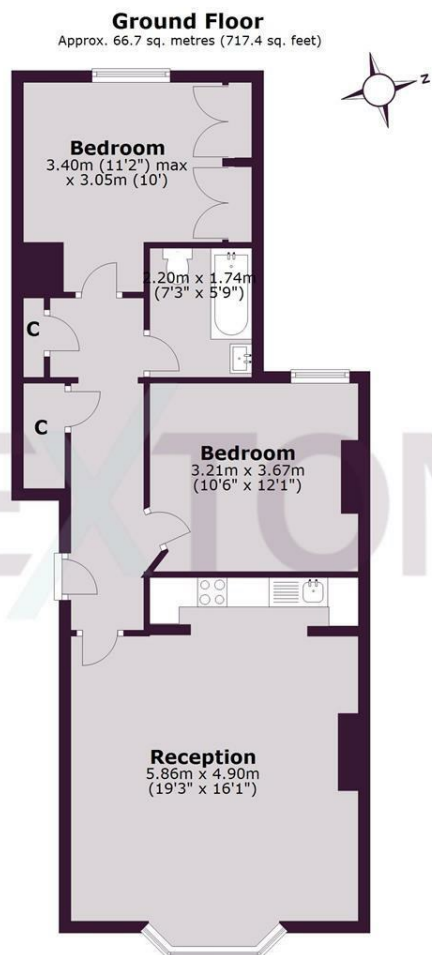
Additionally, the property benefits from two large cupboards off the hallway, offering valuable storage.

With its enviable location just a short stroll from the vibrant Church Road and Hove's picturesque seafront, residents enjoy easy access to an array of popular cafes, restaurants, and boutique shops. The close proximity to Hove train station makes commuting and exploring the surrounding areas effortlessly convenient.





SCAN HERE TO OFFER ON THIS PROPERTY



Total area: approx. 66.7 sq. metres (717.4 sq. feet)

Whilst every care has been taken to ensure accuracy, dimensions are approximate and for illustrative purposes only.

Created by Lextons. All rights reserved.

Energy Efficiency Rating		Current	Potential
Very energy efficient - lower running costs			
(92 plus) A			
(81-91) B			
(69-80) C			
(55-68) D			
(39-54) E			
(21-38) F			
(1-20) G			
Not energy efficient - higher running costs			
England & Wales	EU Directive 2002/91/EC		