

# Chesham Place

## Brighton

**LEXTONS** / SALES  
LETTINGS  
AUCTIONS  
COMMERCIAL



## About the property

GUIDE £180,000-£200,000

A bright and spacious one bedroom, second floor maisonette with a balcony, set within easy reach of Brighton seafront within Kemptown, having a wide range of shops and restaurants just moments away. The property offers a lovely Lounge with attractive leaded windows, stairs to first floor with a well fitted Kitchen with ample storage. The First Floor Landing has Built in storage cupboard and offers access to the white shower room and the Bedroom, also offering built in storage and access to the balcony via double doors.

# Chesham Place Brighton



1

BEDROOM

1

RECEPTION

1

BATHROOM







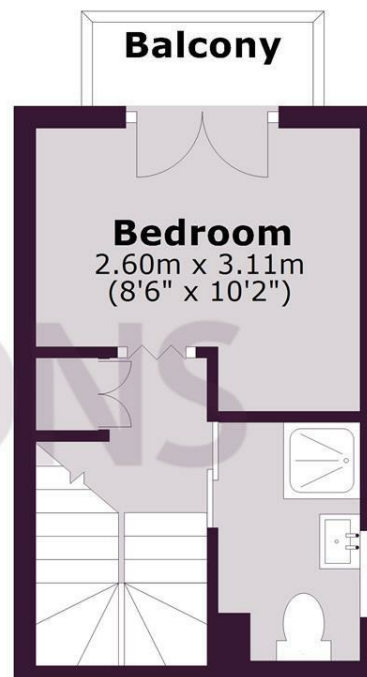
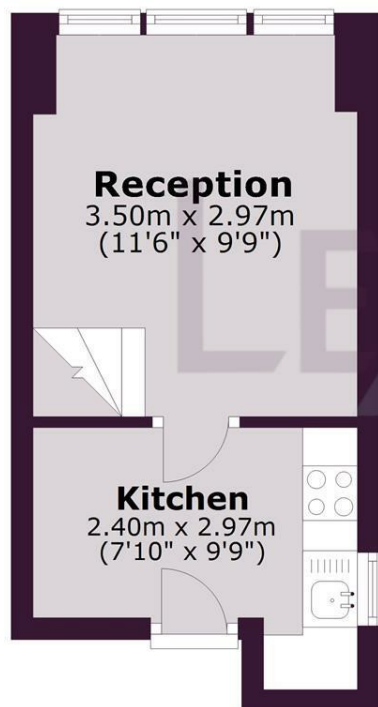
SCAN HERE TO OFFER ON THIS PROPERTY

## Second Floor

Approx. 14.5 sq. metres (156.2 sq. feet)

## First Floor

Approx. 16.4 sq. metres (176.7 sq. feet)



Total area: approx. 30.9 sq. metres (333.0 sq. feet)

Whilst every care has been taken to ensure accuracy, dimensions are approximate and for illustrative purposes only.

Created by Lextons. All rights reserved.

Energy Efficiency Rating		Current	Potential
Very energy efficient - lower running costs			
(92 plus) <b>A</b>			
(81-91) <b>B</b>			
(69-80) <b>C</b>			
(55-68) <b>D</b>		65	76
(39-54) <b>E</b>			
(21-38) <b>F</b>			
(1-20) <b>G</b>			
Not energy efficient - higher running costs			
<b>England &amp; Wales</b>		EU Directive 2002/91/EC	