

Hawthorn Close

Brighton



Hawthorn Close Brighton



5

BEDROOM

2

RECEPTION

1

BATHROOM

About the property

* Guide price £500,000-£550,000*

Nestled in the desirable Hawthorn Close of Saltdean, Brighton, this stunning 4/5-bedroom detached house is a true gem waiting to be discovered. Boasting two reception rooms, this property offers a wealth of living space for you to enjoy.

As you step inside, you are greeted by a spacious living area with a double aspect that floods the room with natural light, seamlessly flowing into the adjoining dining area - perfect for entertaining guests or enjoying family meals. The modern fitted kitchen with white units is a chef's dream, complemented by a separate utility room providing ample space for your appliances.

One unique feature of this property is the separate study room that could easily be transformed into a self-contained annexe, offering versatility and potential for various living arrangements. The ground floor also houses a convenient cloakroom with a modern suite for added comfort.

Venture upstairs to discover four generously sized bedrooms and a family shower room with a contemporary suite, ensuring both style and functionality. The outdoor space is equally impressive, with a large rear garden filled with mature fruit trees, flowers, shrubs, vegetable patches, and a spacious summer house/garden room - ideal for relaxation or outdoor gatherings.

The fully enclosed and private garden boasts secluded seating areas, a greenhouse, and a garden shed with power, catering to all your gardening needs. To the front, a block paved driveway provides off-road parking for multiple vehicles, alongside a beautifully landscaped garden area.

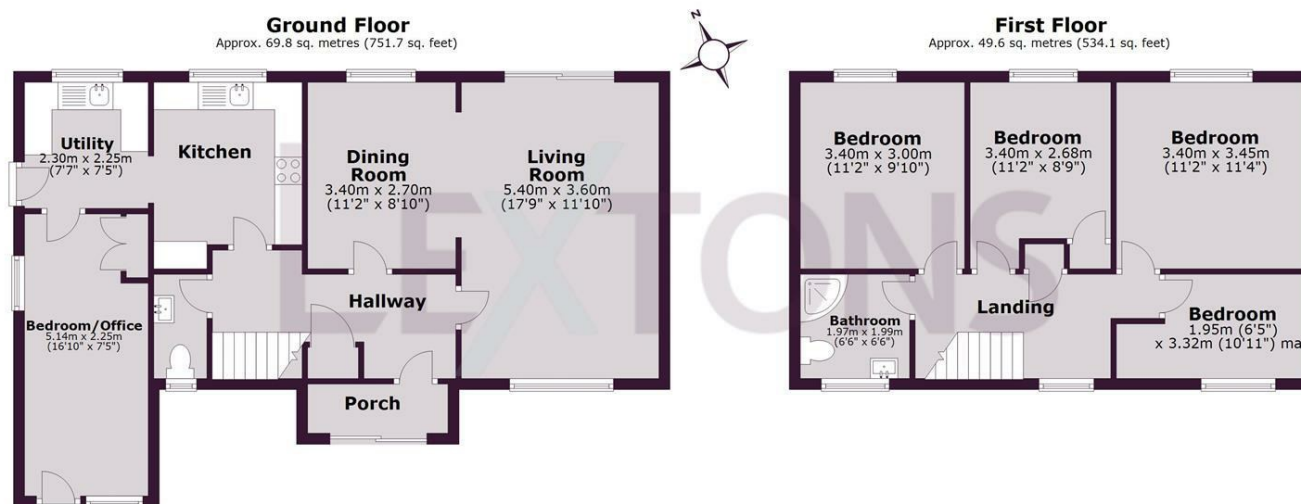
Conveniently located with easy access to amenities, this property offers a delightful living experience in a sought-after residential area. Don't miss the opportunity to make this house your home - book a viewing today to fully appreciate all it has to offer.







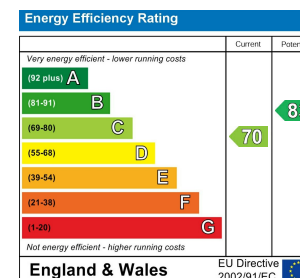
SCAN HERE TO VIEW ALL AUCTION PROPERTIES



Total area: approx. 119.5 sq. metres (1285.8 sq. feet)

Whilst every care has been taken to ensure accuracy, dimensions are approximate and for illustrative purposes only.

Created by Lextons. All rights reserved.



LEXTONS

Call our sales team to arrange a viewing appointment:

01273 56 77 66

174 Church Road, Hove, BN3 2DJ
hovesales@lextons.co.uk | www.lextons.co.uk