

# Cambridge Road

## Eastbourne

**LEX**TONS / SALES  
LETTINGS  
AUCTIONS  
COMMERCIAL



## About the property

Welcome to this charming studio flat located on Cambridge Road in the picturesque seaside town of Eastbourne. With the seafront at the end of the street, the location is close to the town centre with the train station within easy walking distance.

This modern property boasts a stylish design with plenty of living space, a good size kitchenette with integrated appliances and a shower room.

Available end of August.  
No pets.

We are holding viewings on the 31st July and all viewings must be booked via our offices.

# Cambridge Road Eastbourne

## £750 Per month



0

BEDROOM

0

RECEPTION

1

BATHROOM

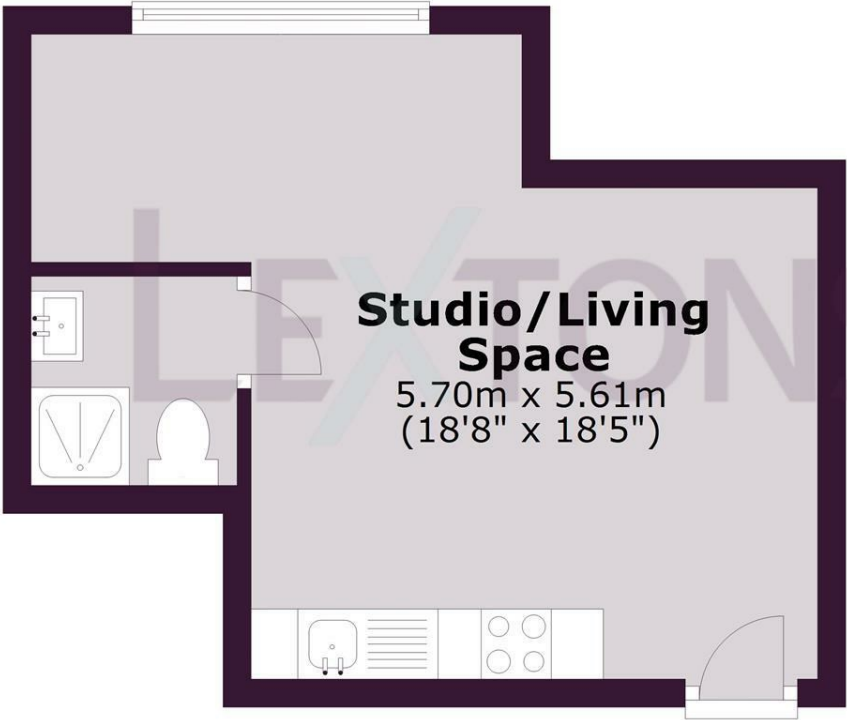




SCAN HERE TO VIEW ALL AVAILABLE PROPERTIES

# Second Floor

Approx. 23.5 sq. metres (253.4 sq. feet)



**Studio/Living Space**  
5.70m x 5.61m  
(18'8" x 18'5")

Total area: approx. 23.5 sq. metres (253.4 sq. feet)

Energy Efficiency Rating		Current	Potential
<i>Very energy efficient - lower running costs</i>			
(92 plus) <b>A</b>			
(81-91) <b>B</b>			
(69-80) <b>C</b>			
(55-68) <b>D</b>		64	71
(39-54) <b>E</b>			
(21-38) <b>F</b>			
(1-20) <b>G</b>			
<i>Not energy efficient - higher running costs</i>			
<b>England &amp; Wales</b>		EU Directive 2002/91/EC	



Call our lettings team to arrange a viewing appointment:

01273 56 77 66

174 Church Road, Hove, BN3 2DJ  
lettings@lextons.co.uk | www.lextons.co.uk