

**Roundhill**

**Brighton**

**LEXTONS** / SALES  
LETTINGS  
AUCTIONS  
COMMERCIAL





## About the property

Measuring over 1300 Square feet, arranged over three levels, in a very popular road just off Upper Lewes Road is this beautifully presented four double bedroom, two bathroom spacious maisonette. The property has recently been redecorated and is offered in excellent condition.

On the first floor there is a shower room and access on to a shingle stoned large garden, making it easy to maintain but ideal for summer barbecues.

The split level landing leads to a large kitchen breakfast room with built in appliances and access to a bright reception room with featured Victorian fireplace and large sash windows leading on to a balcony. Adjacent is one of the bedrooms with lovely views over Brighton. On the next floor there are three further double bedrooms and a family bathroom.

The property is available early October and is offered part furnished.  
SHARERS WELCOME

# Roundhill Crescent Brighton

£2,800 Per month



4

BEDROOM

1

RECEPTION

2

BATHROOM

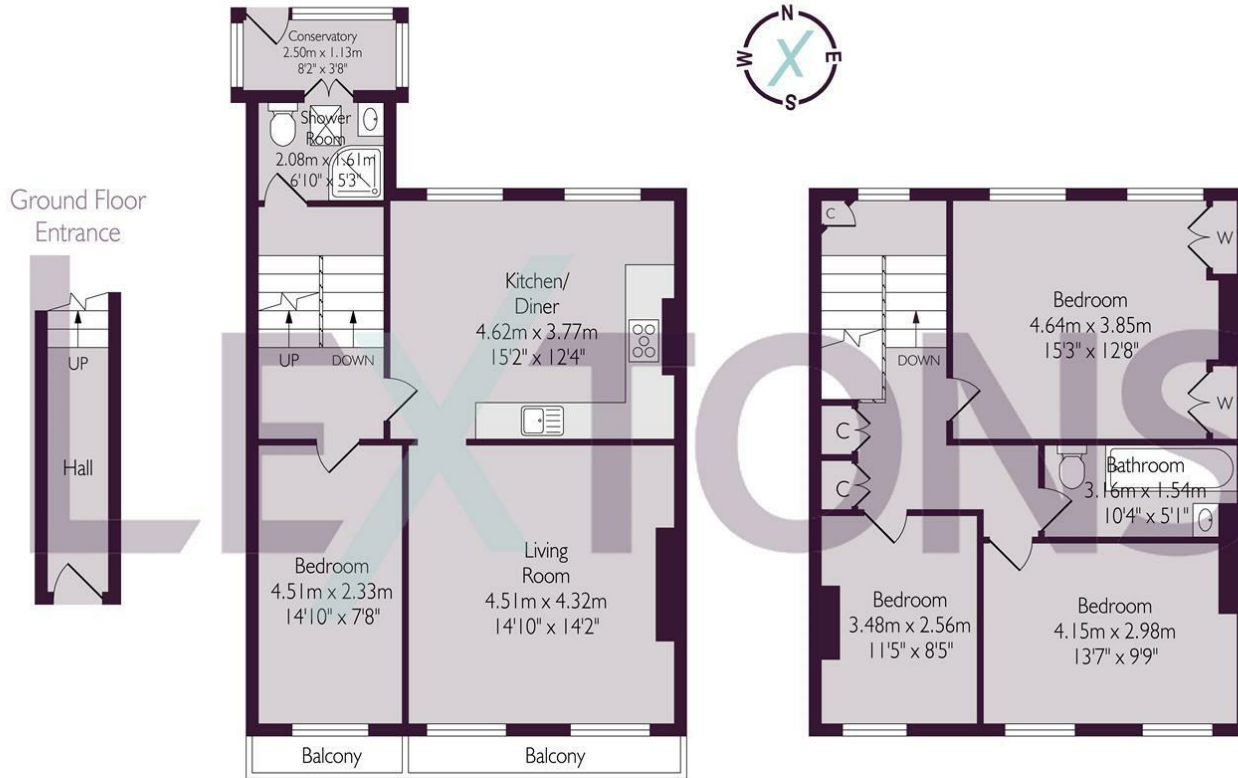




SCAN HERE TO VIEW ALL AVAILABLE PROPERTIES

First Floor

Second Floor



Approximate gross internal floor area 127.6 sq m/ 1373.5 sq ft

Whilst every care has been taken to ensure accuracy, dimensions are approximate and for illustrative purpose only.  
Created for Lextons. All rights reserved

Energy Efficiency Rating		
	Current	Potential
Very energy efficient - lower running costs		
(92 plus) <b>A</b>		
(81-91) <b>B</b>		
(69-80) <b>C</b>		71
(55-68) <b>D</b>	55	
(39-54) <b>E</b>		
(21-38) <b>F</b>		
(1-20) <b>G</b>		
Not energy efficient - higher running costs		
<b>England &amp; Wales</b>	EU Directive 2002/91/EC	