

Osmond Road

Hove

LEXTONS / SALES
LETTINGS
AUCTIONS
COMMERCIAL



About the property

Welcome to Osmond Road, Hove - a charming location for this delightful ground floor garden apartment in an attractive Edwardian building. This newly refurbished property boasts a blend of modern style and classic charm, with high ceilings and contemporary decor creating a welcoming atmosphere throughout.

Step inside to discover a stunning open plan kitchen/living area, complete with built-in appliances and a wine cooler - perfect for entertaining guests or simply relaxing in style. The spacious living areas also features underfloor heating and an open fireplace, adding a touch of elegance to the space.

The accommodation includes a generously sized main bedroom and a double second bedroom, both accessed from the inner hallway. The contemporary bathroom is a true highlight, with a luxurious bath and drench shower above, complemented by beautiful carerra marble tiles and sleek black fittings.

Outside, the property offers a landscaped westerly aspect rear garden, providing a peaceful retreat with a lawned area and raised display beds. With side access for convenience, this outdoor space is ideal for enjoying sunny days or hosting al fresco gatherings.

This apartment also comes with the added benefits of a share in the freehold and no onward chain. Don't miss the chance to make this stylish and well-appointed flat your new home - book a viewing today and experience the best of Hove living at Osmond Road.

Osmond Road Hove



2

BEDROOM

1

RECEPTION

1

BATHROOM



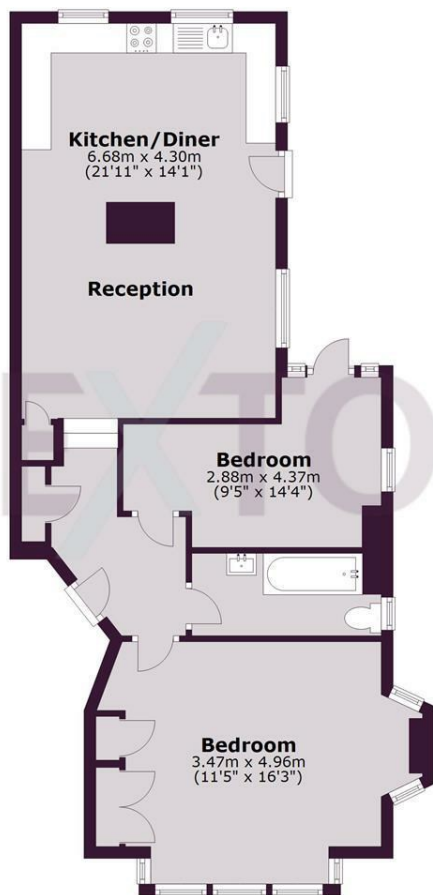






SCAN HERE TO OFFER ON THIS PROPERTY

Ground Floor
Approx. 78 sq. metres (839.0 sq. feet)



Total area: approx. 78 sq. metres (839.0 sq. feet)

Energy Efficiency Rating		Current	Potential
<i>Very energy efficient - lower running costs</i>			
(92 plus) A			
(81-91) B			77
(69-80) C		63	
(55-68) D			
(39-54) E			
(21-38) F			
(1-20) G			
<i>Not energy efficient - higher running costs</i>			
England & Wales		EU Directive 2002/91/EC	