

Lansdowne Street

Hove

LEXTONS / SALES
LETTINGS
AUCTIONS
COMMERCIAL



About the property

A beautifully presented first floor one-bedroom apartment which is situated in Central Hove, moments away from a number of restaurants, bars and independent shops on Western Road and Church Road. The seafront and transport links are also close by.

The apartment features a delightful living room with sash bay windows, modern kitchen with ample storage space and integrated appliances, generous sized double bedroom and white bathroom suite.

The property is offered with optional furnishings and is available immediately. No pets.

Lansdowne Street Hove

£1,300 Per month



1

BEDROOM

1

RECEPTION

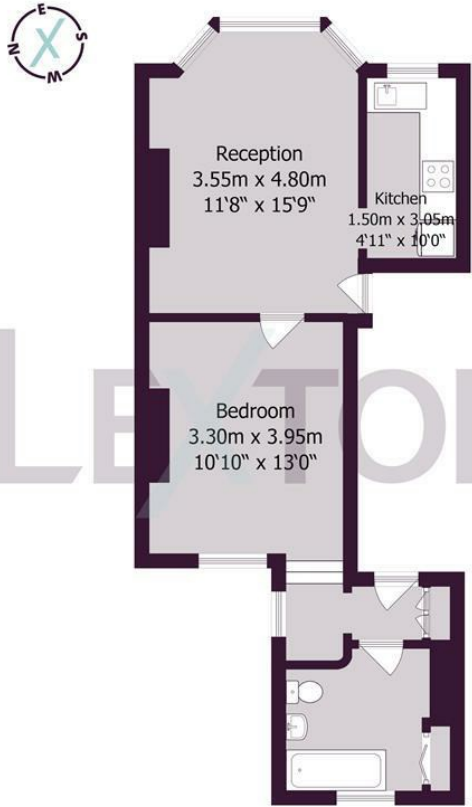
1

BATHROOM





SCAN HERE TO VIEW ALL AVAILABLE PROPERTIES



Approximate gross internal floor area 45 sq m/ 484 sq ft

Whilst every care has been taken to ensure accuracy, dimensions are approximate and for illustrative purposes only.

Created by Property Photography UK for Lextons. All rights reserved.

Energy Efficiency Rating		Current	Potential
Very energy efficient - lower running costs			
(92 plus) A			
(81-91) B			
(69-80) C		70	80
(55-68) D			
(39-54) E			
(21-38) F			
(1-20) G			
Not energy efficient - higher running costs			
England & Wales	EU Directive 2002/91/EC		