

Baxter Street

Brighton

LEXTONS /
SALES
LETTINGS
AUCTIONS
COMMERCIAL



Baxter Street Brighton



4

BEDROOM

2

RECEPTION

1

BATHROOM

About the property

GUIDE PRICE £650,000-£675,000

A four bedroom Victorian-era mid-terrace house in the wonderful community of Hanover which blends historic charm with modern amenities.

Upon entering, you step into a cosy living space that has well proportioned rooms and has been well maintained and styled, the large bay window floods the room with natural light and gives an airy feel to the open plan space. The spacious living room offers a comfortable setting for relaxation and entertaining.

Moving towards the rear of the property, you'll find a spacious dining area and modern and well-equipped kitchen with ample storage and countertop space. The kitchen's design seamlessly combines contemporary conveniences with the charm of the Victorian period.

This house features four bedrooms, each uniquely designed to maximize space and comfort. Large windows in the bedrooms provide views of the surrounding area. There is a well-appointed bathroom with modern fixtures and fittings, offering both a bath and a shower for your convenience.

One of the unique features of this property is the spiral staircase, which is a wonderful focal point of the interior design. The spiral staircase leads from the living room to the upstairs, adding a sense of architectural intrigue.

The property includes a garage, providing secure parking for your vehicle and additional storage space, a valuable asset in a city like Brighton

The real gem of this property a roof terrace. You can transform the rooftop into a serene outdoor space with panoramic views of Hanover and Brighton. It could become a perfect spot for enjoying sunny days, hosting gatherings, or simply relaxing in a private oasis.

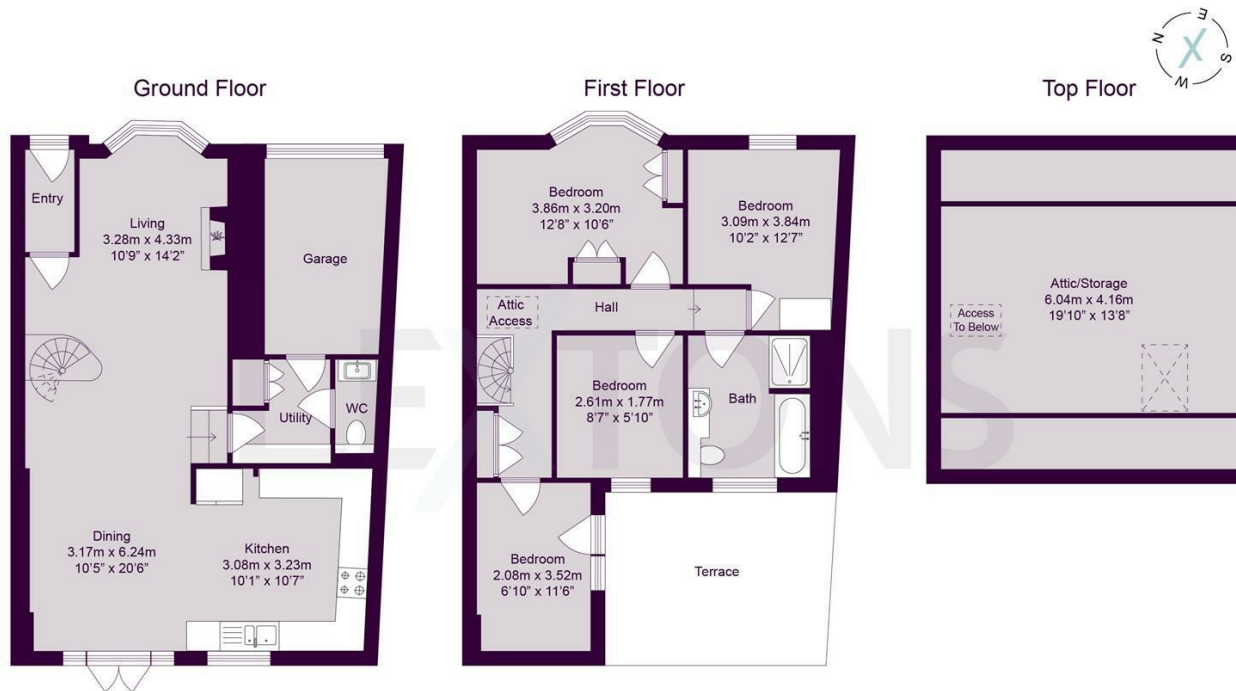
In addition to the roof terrace, the house there is also good sized patios garden at the rear. This outdoor space has a Mediterranean feel and is a tranquil retreat for outdoor activities, gardening, or leisure.





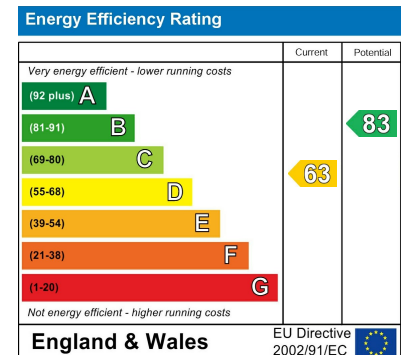


SCAN HERE TO OFFER ON THIS PROPERTY



Approximate gross Internal floor Area 153.81 sq m/ 1655.65 sq ft

Whilst every care has been taken to ensure accuracy, dimensions are approximate and for illustrative purposes only.



LEXTONS

Call our sales team to arrange a viewing appointment:

01273 56 77 66

174 Church Road, Hove, BN3 2DJ
hovesales@lextons.co.uk | www.lextons.co.uk