

# Adelaide Crescent

## Hove

**LEX**TONS / SALES  
LETTINGS  
AUCTIONS  
COMMERCIAL



## About the property

Located in the prestigious Adelaide Crescent in Hove, we are thrilled to present this charming three-bedroom lower ground floor apartment. This delightful property boasts access to a courtyard patio garden and is just a stone's throw away from Hove seafront.

Upon entering, you are greeted by a spacious 21-foot entrance hall that sets the tone for the rest of this elegant apartment. The highlight of this home is the impressive 18 ft x 16 ft open plan living room, kitchen, and dining area - an ideal space for entertaining guests or relaxing with your loved ones.

In addition to the two generous double bedrooms, there is a convenient shower room and an extra room adjacent to the living area, perfect for a study, office, or even a third bedroom. The versatility of this property is truly remarkable.

Being part of a well-maintained Grade II listed building, this apartment also offers a share in the freehold interest.

Located in the highly sought-after seafront location of Hove, this apartment offers a unique opportunity to experience coastal living at its finest. With easy access to local amenities and the beach just a short stroll away, this property is a rare find that combines elegance, convenience, and a touch of luxury.

# Adelaide Crescent Hove



3

BEDROOM

1

RECEPTION

2

BATHROOM

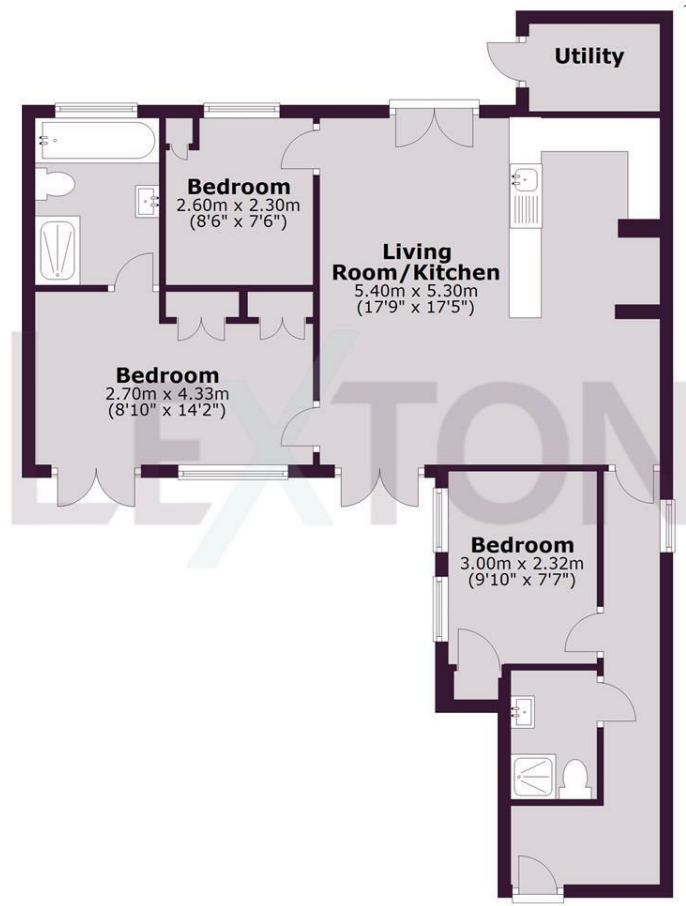




SCAN HERE TO OFFER ON THIS PROPERTY

### Lower Ground Floor

Approx. 73.0 sq. metres (785.8 sq. feet)



Total area: approx. 73.0 sq. metres (785.8 sq. feet)

Whilst every care has been taken to ensure accuracy, dimensions are approximate and for illustrative purposes only.

Created by Lextons. All rights reserved.

Energy Efficiency Rating		
	Current	Potential
<i>Very energy efficient - lower running costs</i>		
(92 plus) <b>A</b>		
(81-91) <b>B</b>		
(69-80) <b>C</b>		
(55-68) <b>D</b>		
(39-54) <b>E</b>		
(21-38) <b>F</b>		
(1-20) <b>G</b>		
<i>Not energy efficient - higher running costs</i>		
<b>England &amp; Wales</b>	EU Directive 2002/91/EC	