

Adelaide Crescent

Hove

LEXTONS / SALES
LETTINGS
AUCTIONS
COMMERCIAL



About the property

Located in the prestigious Adelaide Crescent in Hove, we are thrilled to present this charming three-bedroom lower ground floor apartment. This delightful property boasts access to a courtyard patio garden and is just a stone's throw away from Hove seafront.

Upon entering, you are greeted by a spacious 21-foot entrance hall that sets the tone for the rest of this elegant apartment. The highlight of this home is the impressive 18 ft x 16 ft open plan living room, kitchen, and dining area - an ideal space for entertaining guests or relaxing with your loved ones.

In addition to the two generous double bedrooms, there is a convenient shower room and an extra room adjacent to the living area, perfect for a study, office, or even a third bedroom. The versatility of this property is truly remarkable.

Being part of a well-maintained Grade II listed building, this apartment also offers a share in the freehold interest.

Located in the highly sought-after seafront location of Hove, this apartment offers a unique opportunity to experience coastal living at its finest. With easy access to local amenities and the beach just a short stroll away, this property is a rare find that combines elegance, convenience, and a touch of luxury.

Adelaide Crescent Hove



3

BEDROOM

1

RECEPTION

2

BATHROOM

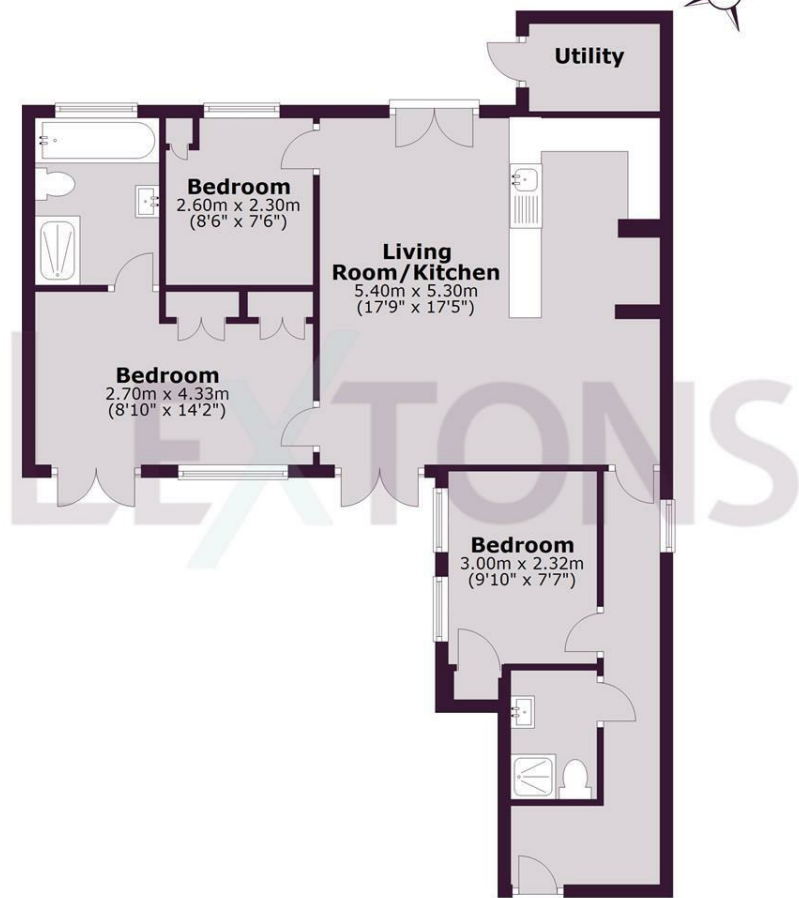




SCAN HERE TO OFFER ON THIS PROPERTY

Lower Ground Floor

Approx. 73.0 sq. metres (785.8 sq. feet)



Total area: approx. 73.0 sq. metres (785.8 sq. feet)

Whilst every care has been taken to ensure accuracy, dimensions are approximate and for illustrative purposes only.

Created by Lextons. All rights reserved.

| Energy Efficiency Rating | | Current | Potential |
|---|----------------------------|---------|-----------|
| Very energy efficient - lower running costs | | | |
| (92 plus) A | | | |
| (81-91) B | | | |
| (69-80) C | | | |
| (55-68) D | | | |
| (39-54) E | | | |
| (21-38) F | | | |
| (1-20) G | | | |
| Not energy efficient - higher running costs | | | |
| England & Wales | EU Directive 2002/91/EC | | |