

St. Georges Road

Brighton

LEXTONS / SALES
LETTINGS
AUCTIONS
COMMERCIAL



About the property

E Classretail unit
Ground Floor - 420 sq ft
Lower ground floor 180 sq ft
Overall - 600 sq ft

The property is located in the heart of Kemptown Village, close to many popular cafes, shops and the road runs adjacent to the seafront.

The property is available to let by way of a full repairing lease for a term to be agreed at a commencing rent of £15,000 per annum exclusive of rates, building insurance, service charge, heating, lighting etc.

Arranged over ground floor & lower ground floor.

Popular Office and night time circuit location.

Situated in busy pedestrian & vehicular thoroughfare.

Within 5 minutes seafront.

Rent £15,000 per annum.

St. Georges Road Brighton

£1,250 Per month

1

BEDROOM

1

RECEPTION

1

BATHROOM





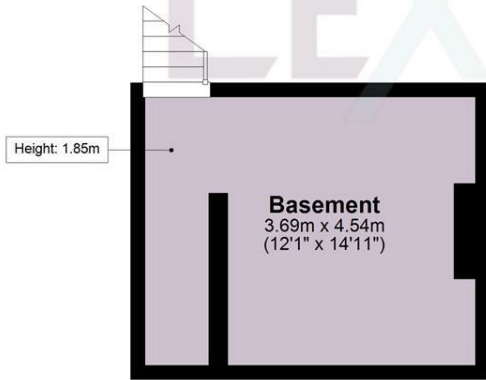
SCAN HERE TO VIEW ALL AVAILABLE PROPERTIES

Ground Floor

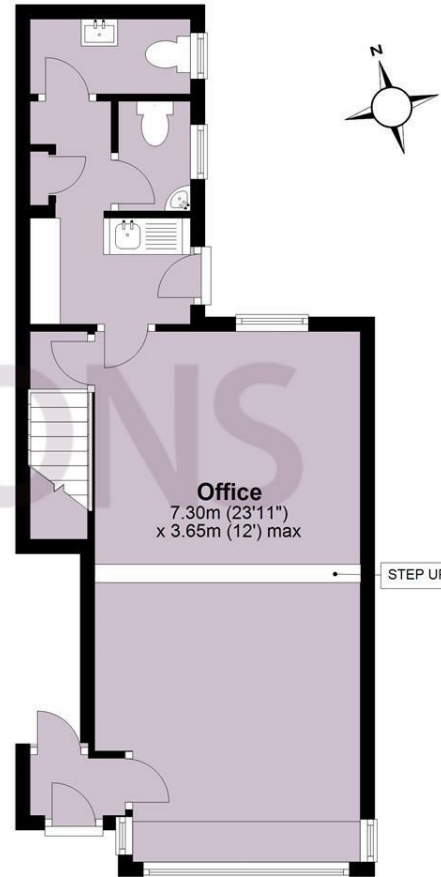
Approx. 39.1 sq. metres (420.6 sq. feet)



Basement
Approx. 16.7 sq. metres (180.2 sq. feet)



Basement
3.69m x 4.54m
(12'1" x 14'11")



Office
7.30m (23'11")
x 3.65m (12') max

Total area: approx. 55.8 sq. metres (600.8 sq. feet)

Energy Efficiency Rating		Current	Potential
Very energy efficient - lower running costs			
(92 plus) A			
(81-91) B			
(69-80) C			
(55-68) D		57	
(39-54) E			
(21-38) F			
(1-20) G			
Not energy efficient - higher running costs			
England & Wales	EU Directive 2002/91/EC		