

Ingram Crescent East

Hove



About the property

A spacious and well presented three bedroom flat occupying part of the first floor of a well maintained purpose built block, within immediate proximity to local train stations, schools and the popular Portland Road shopping throughfare.

The entrance hall leads you to all of the rooms including a wonderful south facing living room, which then leads out to the South facing balcony and the fitted kitchen provides plenty of storage and work surface space There is also a white suite bathroom, separate WC and three good size bedrooms, one of which could make a perfect home office for buyers wanting to work from home.

Finally, the flat further benefits from an abundance of storage with two large cupboards in the hallway and access to communal gardens.

This is a perfect home for first time buyers, a holiday home and young families. A must see!

Ingram Crescent East Hove



3

BEDROOM

1

RECEPTION

1

BATHROOM

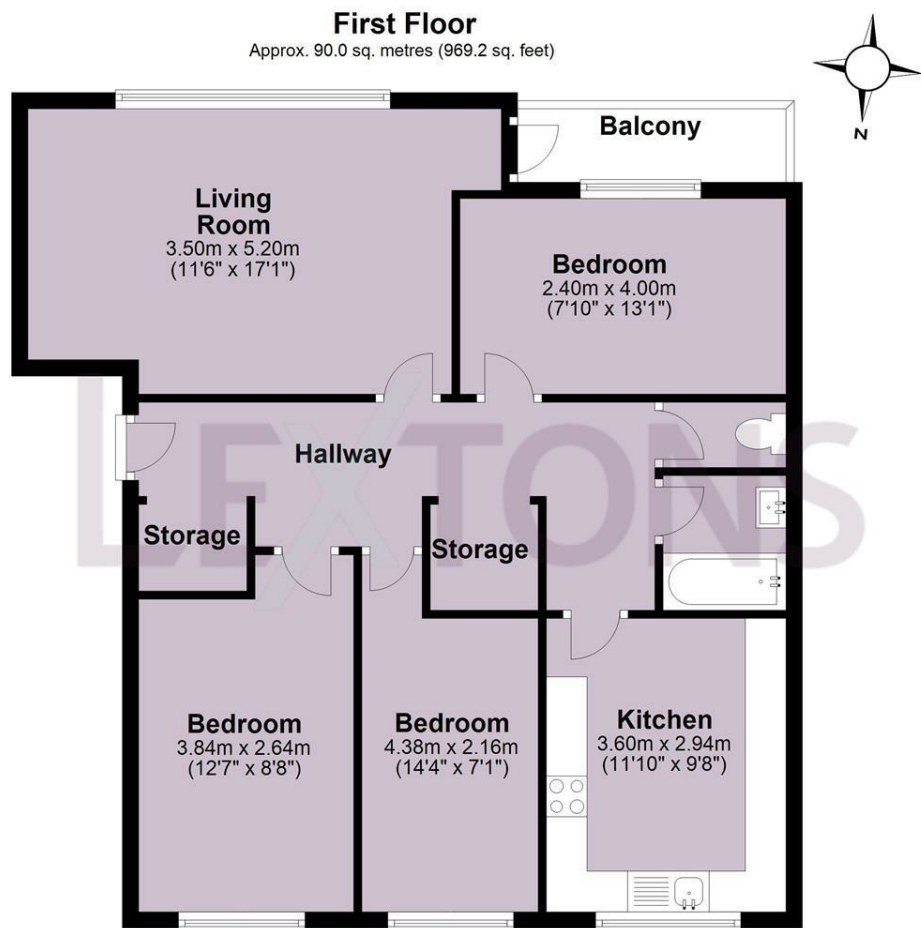








SCAN HERE TO OFFER ON THIS PROPERTY



Total area: approx. 90.0 sq. metres (969.2 sq. feet)

Energy Efficiency Rating		Current	Potential
Very energy efficient - lower running costs			
(92 plus) A			
(81-91) B		77	80
(69-80) C			
(55-68) D			
(39-54) E			
(21-38) F			
(1-20) G			
Not energy efficient - higher running costs			
England & Wales		EU Directive 2002/91/EC	