

Rutland Gardens

Hove

LEXTONS / SALES
LETTINGS
AUCTIONS
COMMERCIAL



About the property

Located in Hove on a lovely tree lined road in a period property, is this two double bedroom, two bathroom split level top floor apartment.

The property has a lovely warm welcoming feel with cream coloured carpets and modern fittings throughout.

The apartment comprises of an open plan living room and a bright kitchen with gas hob, electric oven, grill, overhead extractor and washing machine. There are two very good size double bedrooms one of which comes with built in storage and there is also a family bathroom. You can also find an additional shower room located off the hallway. This delightful property is available from 27th April 2024 on a PART UNFURNISHED basis.

Rutland Gardens Hove

£1,600 Per month



2

BEDROOM

1

RECEPTION

2

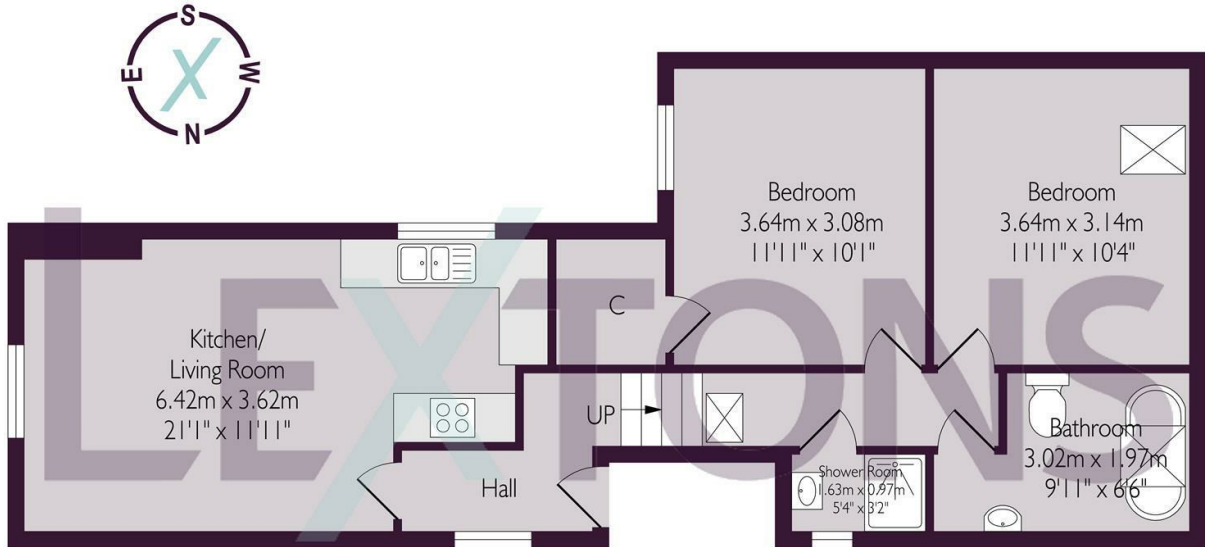
BATHROOM



SCAN HERE TO VIEW ALL AVAILABLE PROPERTIES



Second Floor



Approximate gross internal floor area 62.1 sq m/ 668.5 sq ft

Whilst every care has been taken to ensure accuracy, dimensions are approximate and for illustrative purpose only.

Created for Lextons. All rights reserved

Energy Efficiency Rating		Current	Potential
Very energy efficient - lower running costs			
(92 plus) A			
(81-91) B			
(69-80) C			
(55-68) D		54	66
(39-54) E			
(21-38) F			
(1-20) G			
Not energy efficient - higher running costs			
England & Wales		EU Directive 2002/91/EC	