

Lansdowne Square

Hove

LEXTONS / SALES
LETTINGS
AUCTIONS
COMMERCIAL



About the property

A rarely available four storey character house in the prestigious Lansdowne Square with off street parking, right in the heart of Hove. The property is close to many local amenities including Hove seafront, Hove mainline station and the many shops, cafes and restaurants in Both Church Road and Western Road.

The property retains many original period features with an absolutely stunning large through reception room with feature fireplace high ceilings and sash windows, a kitchen breakfast room with an original Aga, separate, dining room, five good size bedrooms and three bathrooms. the property also benefits from a private rear courtyard.

The property is available to let immediately and would make a perfect home on a long term tenancy.

Lansdowne Square Hove



5

BEDROOM

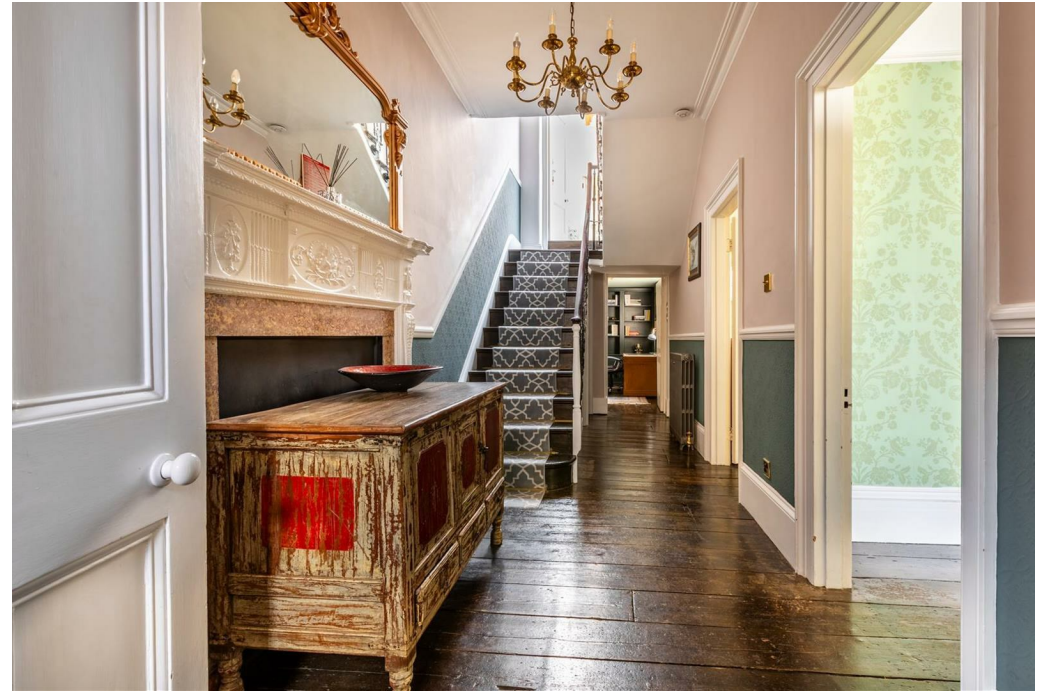
3

RECEPTION

2

BATHROOM







SCAN HERE TO VIEW ALL AVAILABLE PROPERTIES



Total area: approx. 224.0 sq. metres (2410.9 sq. feet)
Whilst every care has been taken to ensure accuracy, dimensions are approximate and for illustrative purposes only.
 Created for exclusive use for Lextons. All rights reserved.
 Plan produced using PlanUp.

Energy Efficiency Rating		Current	Potential
Very energy efficient - lower running costs			
(92 plus) A			83
(81-91) B			
(69-80) C			
(55-68) D		63	
(39-54) E			
(21-38) F			
(1-20) G			
Not energy efficient - higher running costs			
England & Wales		EU Directive 2002/91/EC	



Call our lettings team to arrange a viewing appointment:

01273 56 77 66

174 Church Road, Hove, BN3 2DJ
 lettings@lextons.co.uk | www.lextons.co.uk