

Brunswick Square

Hove

LEXTONS / SALES
LETTINGS
AUCTIONS
COMMERCIAL



About the property

Guide Price £800,000 To £850,000

A simply stunning three bedroom mansion apartment boasting features consistent with the period, situated in none other than Hove's regency Brunswick Square.

Brunswick Square is ideally located in the heart of Brighton & Hove close to an array of amenities including the promenade and seafront, both Brighton and Hove mainline stations and of course the many shops, cafes, bars and restaurants that the city has to offer.

The flat itself forms the first floor and features two double bedrooms, further single bedroom, good size bathroom, additional shower room and kitchen/breakfast room with large sash window.

The spacious living/dining room is the centre piece of the apartment and comes with deep skirting, picture rail, coving, large ceiling rose and feature fireplace, as well as three full length sash windows providing the most gorgeous views of the Square gardens and sea beyond.

This really is a beautiful period apartment which offers potential for modernisation to create a comfortable and stylish city abode.

Brunswick Square Hove



3

BEDROOM

1

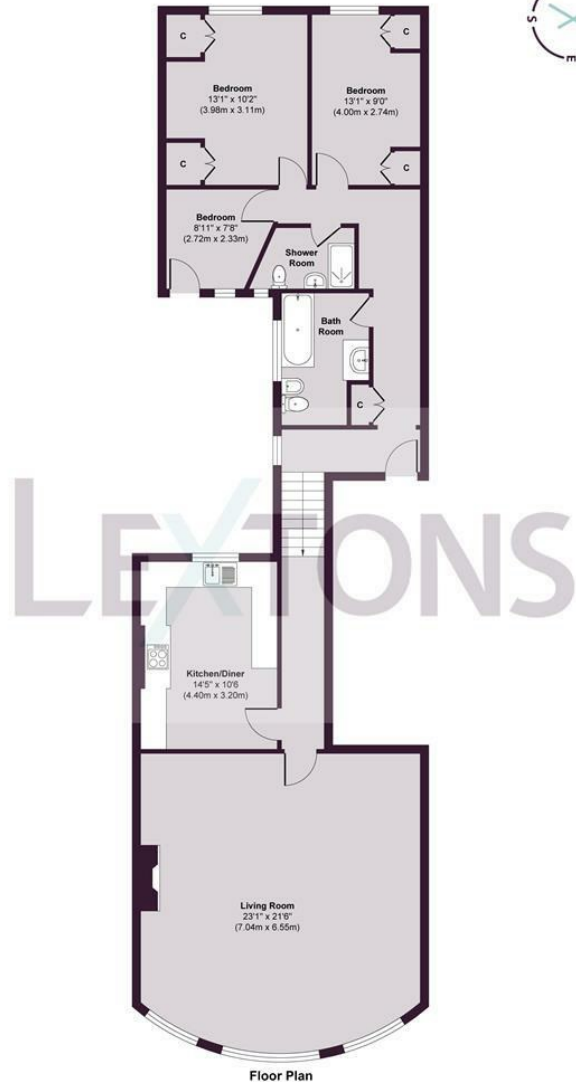
RECEPTION

2

BATHROOM



Brunswick Square



SCAN HERE TO OFFER ON THIS PROPERTY



LEXTONS

Whilst every care has been taken to ensure accuracy, dimensions are approximate and for illustrative purposes only.
Approx. Gross Internal Floor Area 1262 sq. ft / 117.31 sq. m

Created by Lextons. All rights reserved.

Energy Efficiency Rating		Current	Potential
Very energy efficient - lower running costs			
(92 plus) A			
(81-91) B			79
(69-80) C	65		
(55-68) D			
(39-54) E			
(21-38) F			
(1-20) G			
Not energy efficient - higher running costs			
England & Wales		EU Directive 2002/91/EC	