

First Avenue

Hove

LEXTONS / SALES
LETTINGS
AUCTIONS
COMMERCIAL



About the property

*** Guide price £550,000 to £600,000 ***

A delightful and well proportioned raised ground floor flat on one of Hove's famous 'Avenues', immediately adjacent to Hove seafront and set within the very heart of central Hove close to many amenities including Hove mainline station. Church Road's vast array of shops, restaurants and cafes are also just at the top of the road.

The property forms part of this imposing period building and boasts features consistent with the period including feature fireplaces, high ceilings, sash windows and ceiling coving and cornicing.

To the rear, there is a double bedroom with mezzanine area and a spacious open plan living room/kitchen with fireplace and floor to ceiling glazed doors leading out onto a balcony. To the front, you'll find a large bedroom with bay window, feature fireplace and parquet flooring. There is also a tiled bathroom and separate WC.

This apartment is beautifully presented and appointed throughout, making internal viewings highly recommended.

First Avenue Hove

£550,000- £600,000
Guide Price

2

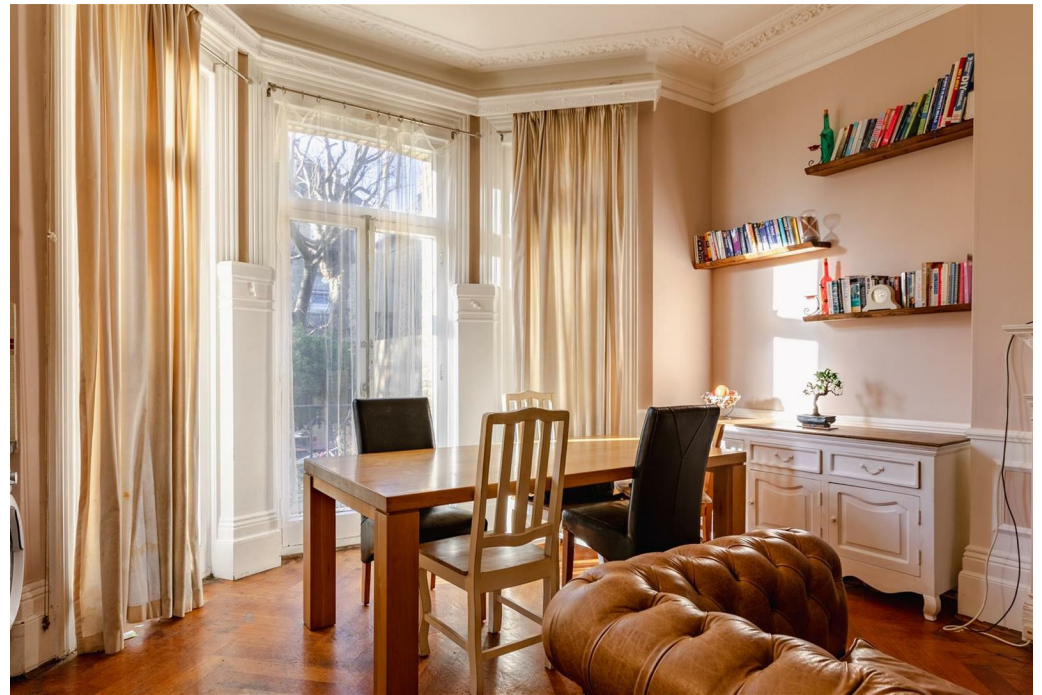
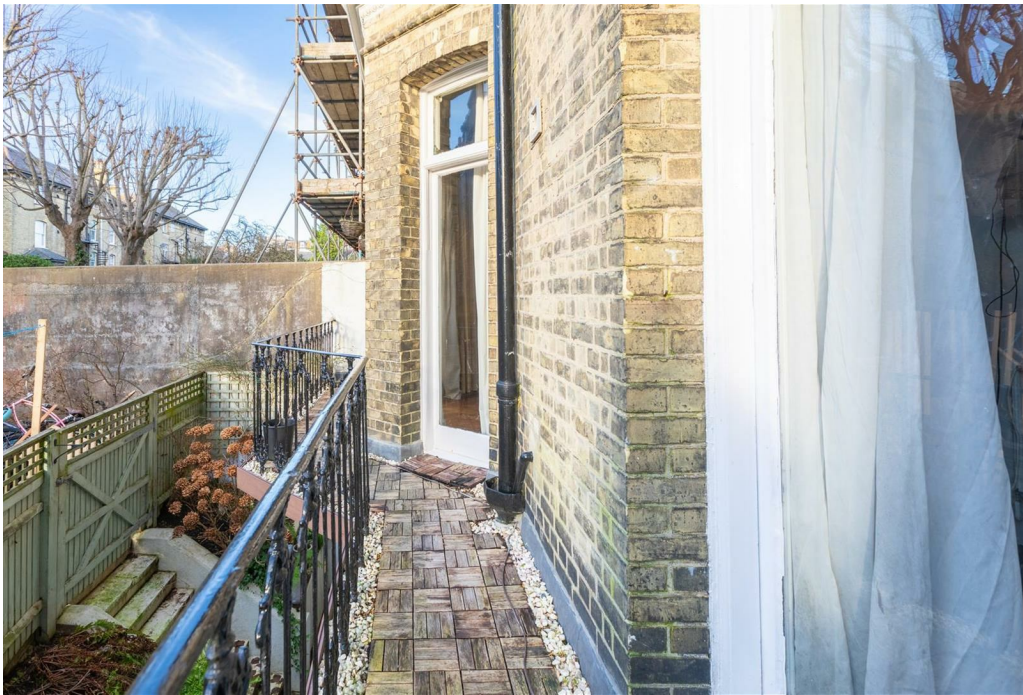
BEDROOM

1

RECEPTION

1

BATHROOM





SCAN HERE TO OFFER ON THIS PROPERTY

Upper Ground Floor

Approx. 90.1 sq. metres (969.5 sq. feet)



Total area: approx. 90.1 sq. metres (969.5 sq. feet)

Whilst every care has been taken to ensure accuracy, dimensions are approximate and for illustrative purposes only.

Created by Lextons. All rights reserved.

Energy Efficiency Rating		Current	Potential
Very energy efficient - lower running costs			
(92 plus) A			
(81-91) B			
(69-80) C			
(55-68) D			
(39-54) E			
(21-38) F			
(1-20) G			
Not energy efficient - higher running costs			
England & Wales		68	78
	EU Directive 2002/91/EC		