

# Chichester Close

Hove



## About the property

\*GUIDE PRICE £450,000 - £475,000\*

A well presented semi detached family home situated in a quiet cul-de-sac within a popular residential location close to country walk trails, Sainsburys supermarket, West Hove Golf Club and number of local schools.

The accommodation is well proportioned throughout and arranged over two floors. On the ground floor, there is a lovely west facing living room with bay window, separate dining room and modern fitted kitchen with door leading out to the good size rear garden.

To the first floor, there are three good size bedrooms and family bathroom. The principal bedroom benefits from the favoured Westerly aspect and fitted wardrobes.

Properties in Chichester Close offer the perfect attributes of a modern family home, meaning internal viewings are highly recommended.

## Chichester Close Hove

£450,000



3

BEDROOM

2

RECEPTION

1

BATHROOM



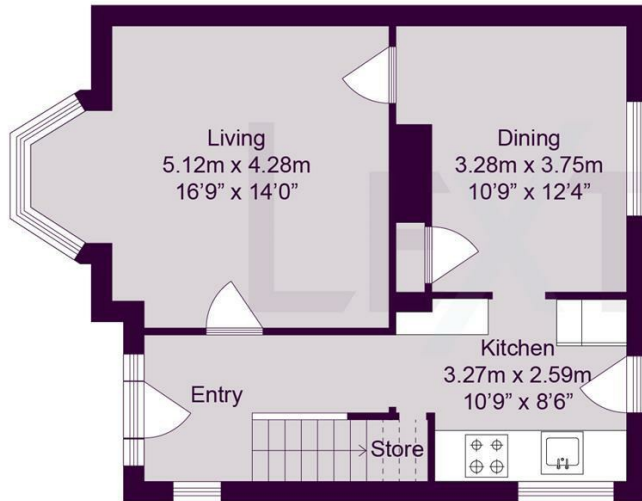




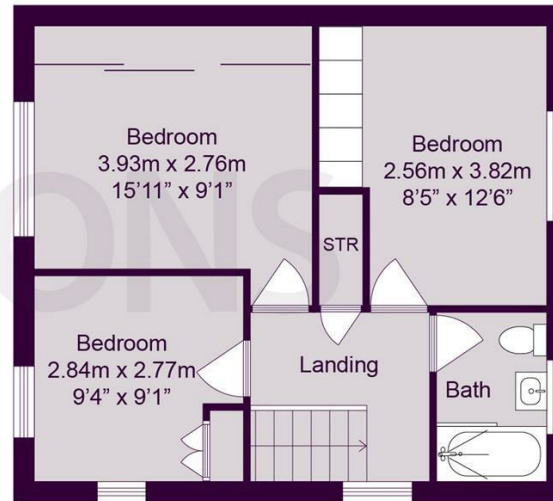
SCAN HERE TO OFFER ON THIS PROPERTY



### Ground Floor



### First Floor



Approximate gross Internal floor Area 94.14 sq m/ 1013.28 sq ft

Whilst every care has been taken to ensure accuracy, dimensions are approximate and for illustrative purposes only.

Energy Efficiency Rating		Current	Potential
<i>Very energy efficient - lower running costs</i>			
(92 plus) <b>A</b>			
(81-91) <b>B</b>		74	77
(69-80) <b>C</b>			
(55-68) <b>D</b>			
(39-54) <b>E</b>			
(21-38) <b>F</b>			
(1-20) <b>G</b>			
<i>Not energy efficient - higher running costs</i>			
<b>England &amp; Wales</b>		EU Directive 2002/91/EC	