



Chudleigh Road, SE4
£925,000

0207 781 9888
pedderproperty.com

pedder





In general

- Substantial late Victorian house
- Four double bedrooms and a bedroom/ study
- Two large reception rooms
- Spacious kitchen/ diner
- Beautiful private garden complete with bike storage
- A family bathroom suite and en-suite
- Array of original features
- Excellent location for transport links and local amenities
- Juliet balcony
- Potential to extend STPP

In detail

A fantastic and substantial five bedroom late Victorian family home for sale on the very popular Chudleigh Road.

The house provides over 1650 sq ft. The ground floor features two large reception rooms of which the front boasts a bay window, a very spacious kitchen/ diner that leads onto a beautiful private rear garden making it the perfect place to entertain, and a WC.

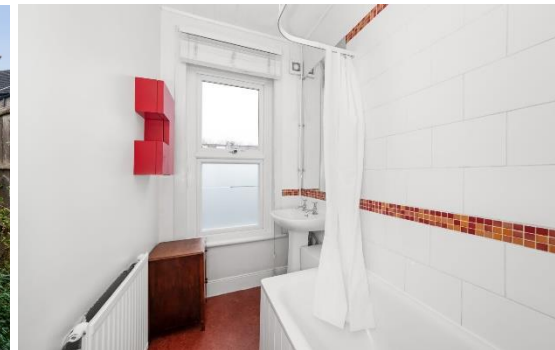
The first floor offers three double bedrooms, a family bathroom suite, a separate WC and a further bedroom/ study. Upstairs on the top floor is a very large master bedroom complete with juliet balcony and a modern en-suite. Further benefits include an array of original features such as multiple fireplaces, wooden flooring, high ceilings and bay windows, double glazing, large bike storage in the garden, an abundance of natural light throughout, plenty of storage including eaves, potential to extend STPP and so much more!

The property is situated approximately 0.2 miles from Ladywell Station, 0.7 miles from Crofton Park Station and with Brockley Station and Lewisham Station close by, there are excellent transport links to a number of locations such as London Bridge, London Victoria, Cannon Street, Canada Water and Whitechapel amongst others.

It is also in a fantastic location for local amenities with an array of local shops, including a bakery, post office, deli, butcher's, cafes, pubs, supermarkets and a wine bar. It is also just a short walk away from lovely green spaces and parks like Ladywell Fields, Hilly Fields and it is also close to popular schools in the area.

Viewings are highly recommended, call the Pedder Brockley sales team to arrange a viewing today.

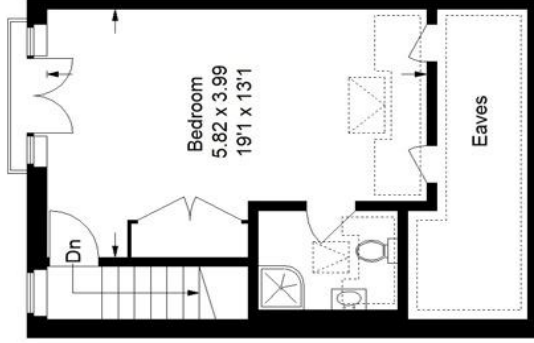
EPC: D | Council Tax Band: E



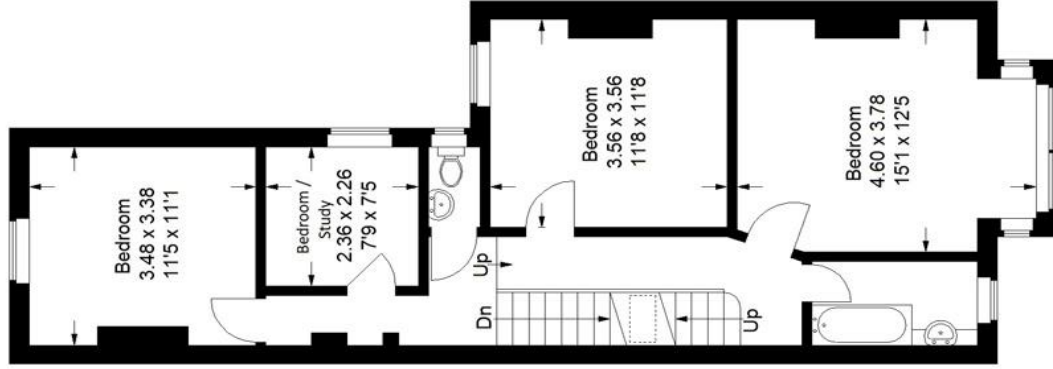
Floorplan

Chudleigh Road, SE4

Approximate Gross Internal Area
(Excluding Eaves / Out Storage)
156.4 sq m / 1684 sq ft

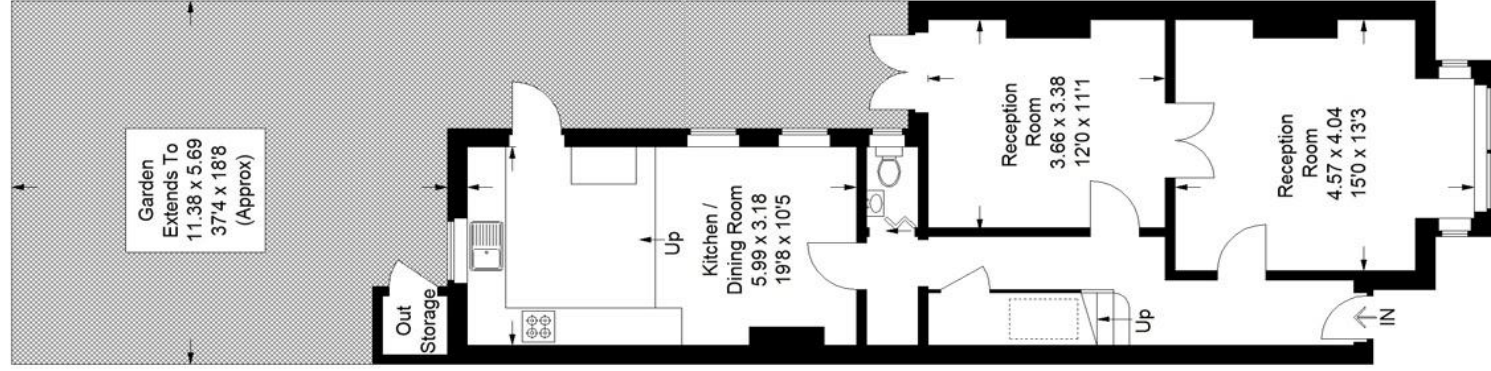


Second Floor



First Floor

= Reduced headroom below 1.5 m / 5'0"



Ground Floor

Copyright www.pedderproperty.com © 2024

These plans are for representation purposes only as defined by RICS - Code of Measuring Practice. Not drawn to Scale. Windows and door openings are approximate. Please check all dimensions, shapes and compass bearings before making any decisions reliant upon them.

Score	Energy rating	Current	Potential
92+	A		
81-91	B		
69-80	C		
55-68	D		
39-54	E		
21-38	F		
1-20	G		

Pedder Property Ltd trading as Pedder for themselves and for the vendor/landlord of this property whose agents they are, give notice that (1) these particulars do not constitute any part of an offer or contract, (2) all statements contained within these particulars are made without responsibility on the part of Pedder or the vendor/landlord, (3) whilst made in good faith, none of the statements contained within these particulars are to be relied upon as a statement of representation or fact, (4) any intending purchaser/tenant must satisfy him/herself by inspection or otherwise as to the correctness of each of the statements contained within these particulars, (5) the vendor/landlord does not make or give either Pedder or any person in their employment any authority to make or give representation or warranty whatsoever in relation to this property.