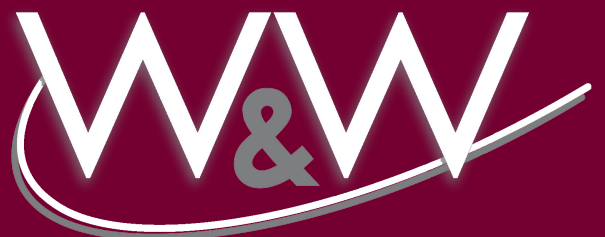
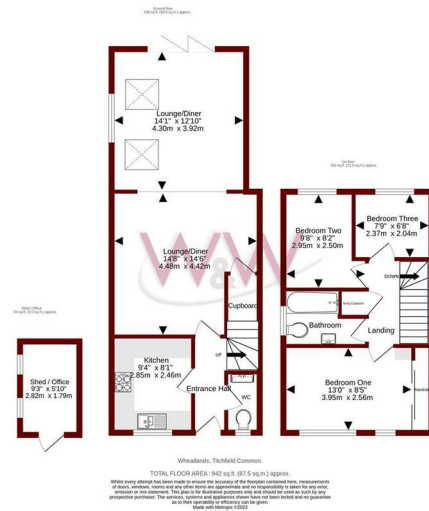




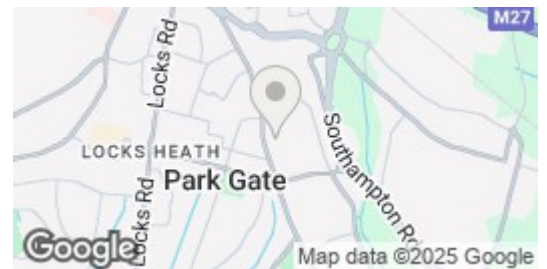
Wheatlands | | Titchfield Common | PO14 4SU

£1,575 Per Month





Energy Efficiency Rating		Current	Potential
<p><i>Very energy efficient - lower running costs</i></p> <p>(92 plus) A</p> <p>(81-91) B</p> <p>(69-80) C</p> <p>(55-68) D</p> <p>(39-54) E</p> <p>(21-38) F</p> <p>(1-20) G</p>		73	85
<p><i>Not energy efficient - higher running costs</i></p>		<p>EU Directive 2002/91/EC</p> <p>England & Wales</p>	



W&W are delighted to offer for rent this immaculately presented & extended three bedroom semi detached house. The property boasts three bedrooms, impressive open plan lounge/dining/family room, kitchen, modern downstairs cloakroom & modern family bathroom. The property also benefits from a beautifully landscaped rear garden with an insulated shed which would make an ideal home office & driveway parking to the front for two vehicles.

Key features



H3 Whiteley Shopping Centre
Whiteley Way
Whiteley
Hants
PO15 7PD
01489 580800
pm@walkerwaterer.co.uk
www.walkerwaterer.co.uk