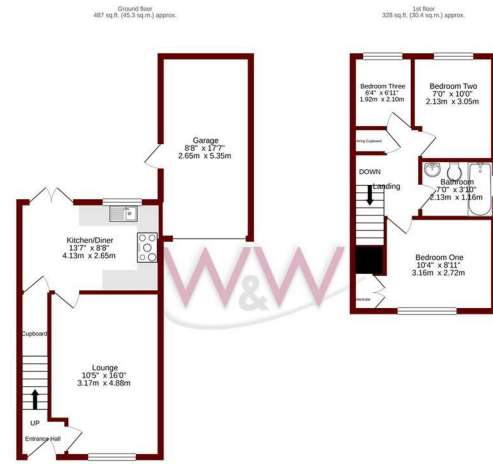




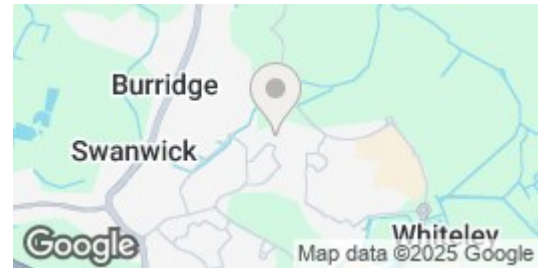
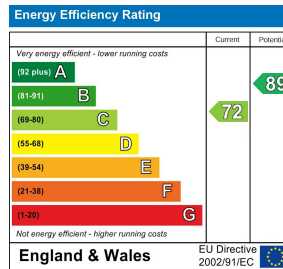
Andersen Close | | Whiteley | PO15 7ER

£1,400 PCM





TOTAL FLOOR AREA: 325 sq. ft. (30.1 sq. m.) approx.
 *These measurements have been taken to the best of our knowledge and are not guaranteed. We make no representation or warranty as to the accuracy of these measurements. We make no representation or warranty as to the accuracy of these measurements. We make no representation or warranty as to the accuracy of these measurements.



Description

W&W are delighted to offer for rent this three bedroom semi-detached home situated in a quiet cul de sac location. The property boasts a spacious lounge, modern kitchen/ diner, three bedrooms, family bathroom, rear landscaped garden, driveway parking and garage. Please note that images used are historical and some elements of decor may have changed. Available from the beginning of June 2025.

Key features

- Three Bedroom Semi-Detached
- Kitchen Diner
- Garage
- Driveway Parking
- Lounge
- Bathroom
- Rear Gardens
- Woodland View to Front



H3 Whiteley Shopping Centre
 Whiteley Way
 Whiteley
 Hants
 PO15 7PD
 01489 580800
 pm@walkerwaterer.co.uk
 www.walkerwaterer.co.uk