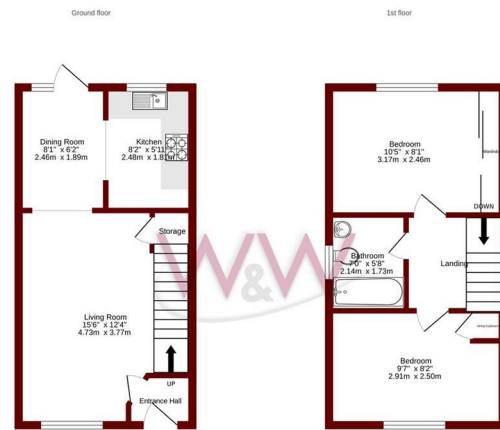




Chesterton Place | Whiteley | Fareham | PO15 7EZ

£1,250 Per Month





While every attempt has been made to ensure the accuracy of the floorplan contained herein, representations, omissions, errors and/or omissions may occur and the floorplan is not intended to be a legal document. The floorplan is provided for information only and is not intended to be a legal document. The floorplan is provided for information only and is not intended to be a legal document. The floorplan is provided for information only and is not intended to be a legal document.

Energy Efficiency Rating	
	Potential
Very energy efficient - lower running costs	
(92 plus) A	92
(81-91) B	
(69-80) C	67
(55-68) D	
(39-54) E	
(21-38) F	
(1-20) G	
Not energy efficient - higher running costs	
England & Wales	EU Directive 2002/91/EC



Description

Walker & Waterer is pleased to offer for rent this well presented two bedroom terrace house with parking in the popular Whiteley area. A short walk to Whiteley Shopping Centre with its array of shops and restaurants, and nearby business park. The property is decorated in a neutral tone throughout and offers a Lounge, Dining room and Kitchen with Washing Machine and Fridge Freezer, upstairs is a family bathroom and two double bedrooms both with built in wardrobes. Available for a long term let we would suggest an early inspection of the property. Available Mid February 2025

Key features



H3 Whiteley Shopping Centre
 Whiteley Way
 Whiteley
 Hants
 PO15 7PD
 01489 580800
 pm@walkerwaterer.co.uk
 www.walkerwaterer.co.uk