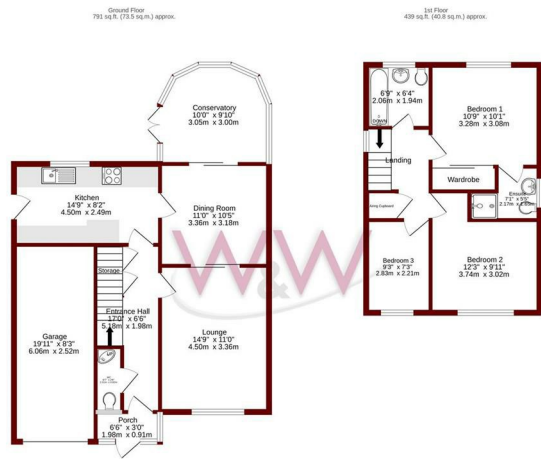




Parklands | Sarisbury Green | Southampton | SO31 7WR

£1,600 PCM

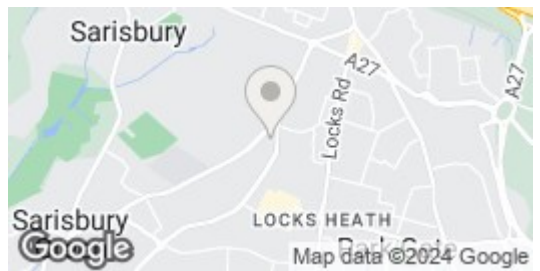




TOTAL FLOOR AREA: 1230 sq ft, (114.2 sq m) approx.

When every attempt has been made to ensure the accuracy of the floorplan information, measurements of actual dimensions shown on the floor plan may differ slightly from the measurements shown on the floor plan. The actual dimensions of the property may vary slightly from the measurements shown on the floor plan. The floor plan is for information only and should not be used as a basis for any legal proceedings.

Energy Efficiency Rating	
	Potential
Very energy efficient - lower running costs	
(92 plus) A	
(81-91) B	
(69-80) C	
(55-68) D	
(39-54) E	
(21-38) F	
(1-20) G	
Not energy efficient - higher running costs	
England & Wales	EU Directive 2002/91/EC
Current	86
Potential	70



Description

An impressive Detached 3 bedroom family home in a great location. The property benefits from a Lounge, kitchen/Breakfast room, dining room, conservatory, cloakroom and garage on the ground floor. Three double bedrooms, en-suite to master bedroom and a separate family bathroom on the first floor. There is also an enclosed rear garden. The property is available now, please call the office on 01489 580800 to arrange a viewing.

Key features



H3 Whiteley Shopping Centre
 Whiteley Way
 Whiteley
 Hants
 PO15 7PD
 01489 580800
 pm@walkerwaterer.co.uk
 www.walkerwaterer.co.uk