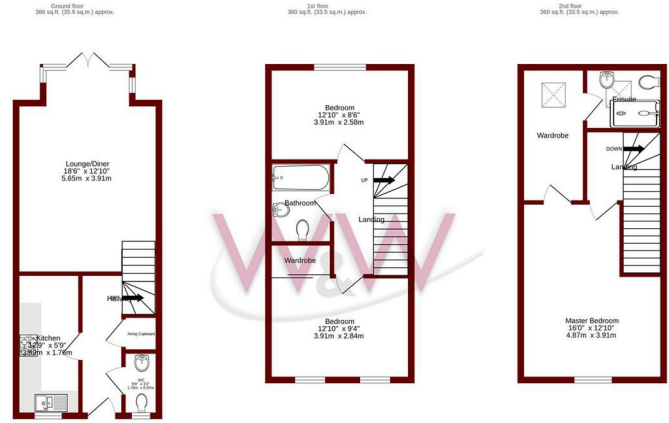




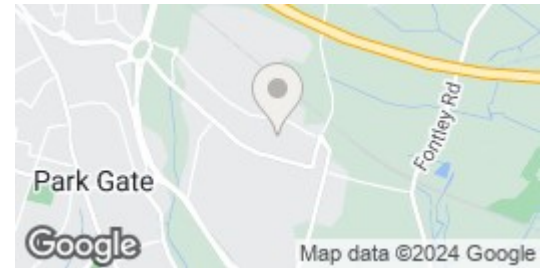
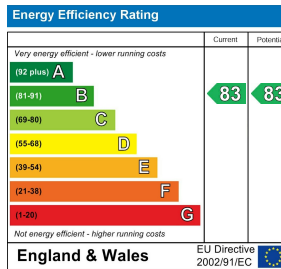
Grevillea Avenue | | Titchfield Park | PO15 5LN

£1,495 Per Month





TOTAL FLOOR AREA: 1107 sq ft (102.8 sq m) approx.
 Whilst every attempt has been made to ensure the accuracy of the figures contained here, measurements of floor, window, rooms and any other items are approximate and no responsibility is taken for any error, omission or mis-statement. This plan is for guidance purposes only and should be used as such for any prospective purchase. The services, fixtures and appliances shown here are not intended and no guarantee as to their quantity or efficiency can be given. Make with W&W 12/24



Description

Three Double Bedroom Townhouse * Lounge/Dining Room * Fitted Kitchen * Cloakroom * Dressing Room & En-Suite to Master Bedroom * Family Bathroom * Rear Garden * Allocated Parking For Two Vehicles * Viewing Advised

Key features

- Three Double Bedroom Townhouse
- Fitted Kitchen
- Family Bathroom
- Allocated Parking For Two Vehicles
- Lounge/Dining Room
- Cloakroom * Dressing Room & En-Suite to Master Bedroom
- Rear Garden
- Viewing Advised



H3 Whiteley Shopping Centre
 Whiteley Way
 Whiteley
 Hants
 PO15 7PD
 01489 580800
 pm@walkerwaterer.co.uk
 www.walkerwaterer.co.uk