

for sale

£315,000



Crampton Road Swindon SN3 3FZ

Looking for a modern home with generous living space? Look no further! Offering this Three bedroom semi-detached home with **NO ONWARD CHAIN!** Located close to the Greenbridge Leisure Park with plenty of shops, restaurants, gyms and entertainment on offer. Viewing is Highly Recommended!



Crampton Road Swindon SN3 3FZ

Ground Floor Accommodation

Entrance Hall

Access to Lounge through to Kitchen / Dining Room and Cloakroom

Lounge

11' 7" x 12' 8" (3.53m x 3.86m)

Double Glazed Window to Front, Door Through to Kitchen / Dining Room and Cloakroom, Radiator

Cloakroom

WC and Wash Hand Basin

Kitchen / Dining Room

14' 8" x 8' 11" (4.47m x 2.72m)

Double Glazed Window and French Doors to Rear Garden, Modern Range of White Gloss Wall and Base Units with Complimenting Work Surface Over, Inset Sink with Draining Board and Mixer Tap, Built in Oven with Gas Hob and Extractor Hood Over, Space and Plumbing for Washing Machine, Space for Fridge / Freezer, Integrated Dishwasher, Under Stairs Cupboard, Radiator



First Floor Accommodation

Landing

Access to Second and Third Bedrooms, Study and Family Bathroom, Stairs up to Second Floor

Bedroom 2

14' 8" Maximum x 8' 9" Maximum (4.47m Maximum x 2.67m Maximum)

Double Glazed Window to Rear, Radiator

Bedroom 3

8' x 9' 5" (2.44m x 2.87m)

Double Glazed Window to Front, Radiator

Study

6' 4" x 5' 9" (1.93m x 1.75m)

Double Glazed Window to Front, Radiator

Bathroom

Three Piece White Suite Comprising of WC, Pedestal Sink and Panel Bath with Mixer Taps and Shower Attachment, Extractor Fan

Second Floor Accommodation

Bedroom 1

18' 10" Maximum x 14' 7" (5.74m Maximum x 4.45m)

Double Glazed Window to Front, Radiator, Door to En-Suite

En-Suite

Double Glazed Velux Style Window to Rear, Three Piece Suite Comprising of WC, Pedestal Sink and Shower Cubicle, Extractor Fan

External Features

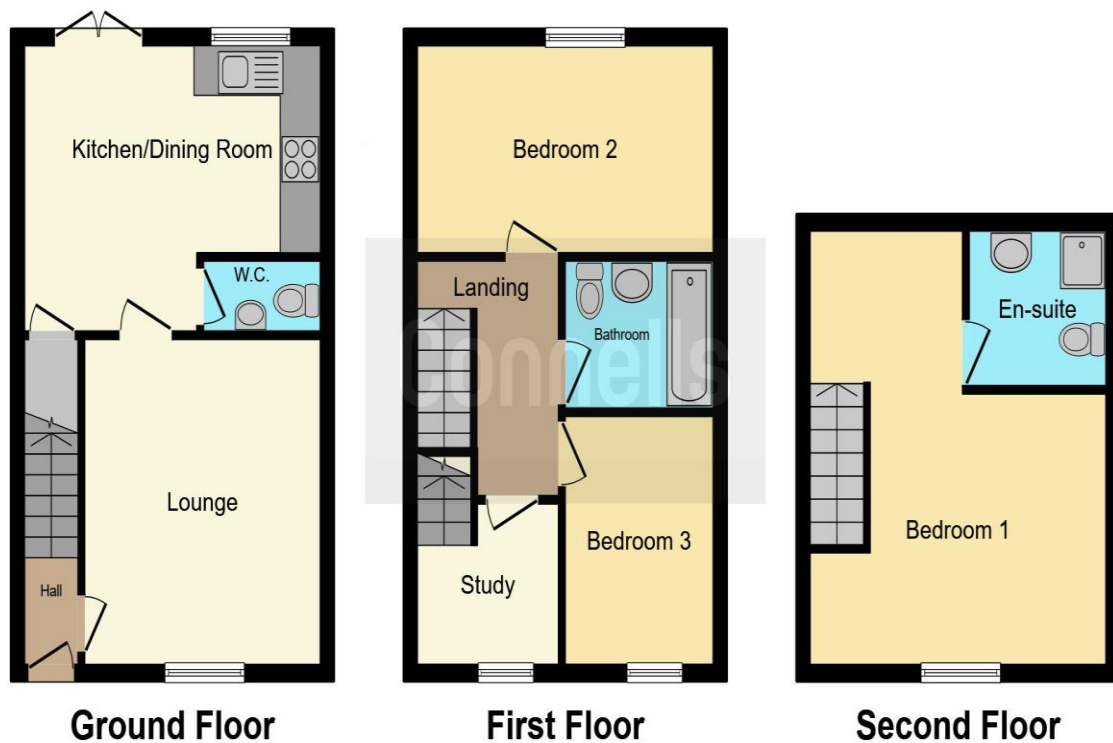
Rear Garden

Private Garden Enclosed by Fence Panels, Mostly Laid to Lawn with Patio Area, Rear Access via Gate

Parking

Driveway Parking for 2 Cars to the Front of the Property.





This floor plan is for illustrative purposes only. It is not drawn to scale. Any measurements, floor areas (including any total floor area), openings and orientation are approximate. No details are guaranteed, they cannot be relied upon for any purpose and they do not form part of any agreement. No liability is taken for any error, omission or misstatement. A party must rely upon its own inspection(s). Powered by www.focalagent.com

To view this property please contact Connells on

T 01793 461757
E swindonoldtown@connells.co.uk

3-5 Victoria House, Albert St
 SWINDON SN1 3BG

Property Ref: SND102918 - 0002

Tenure:Freehold EPC Rating: B

Council Tax Band: D

view this property online connells.co.uk/Property/SND102918



1. MONEY LAUNDERING REGULATIONS Intending purchasers will be asked to produce identification documentation at a later stage and we would ask for your co-operation in order that there will be no delay in agreeing the sale. 2. These particulars do not constitute part or all of an offer or contract. 3. The measurements indicated are supplied for guidance only and as such must be considered incorrect. Potential buyers are advised to recheck measurements before committing to any expense. 4. We have not tested any apparatus, equipment, fixtures, fittings or services and it is in the buyers interest to check the working condition of any appliances.

Connells Residential is registered in England and Wales under company number 1489613, Registered Office is Cumbria House, 16-20 Hockliffe Street, Leighton Buzzard, Bedfordshire, LU7 1GN. VAT Registration Number is 500 2481 05.

see all our properties at <http://www.connells.co.uk> | www.rightmove.co.uk | www.zoopla.co.uk