



Connells

Plot 23 Oakfield
Swindon



Property Description

EPC A RATED ENERGY EFFICIENT HOME
Oakfield has something for everyone. Whether you're just starting out, need a bit of space for your growing family, want a roof terrace to relax and soak up the sun or you after some lovely outdoor space, you'll find it here!

You'll also be able to live the way you want. That could mean taking advantage of the spacious layout to create an office space and work from home. You'll feel at home and part of the community at Oakfield.

Every home in Oakfield is designed from scratch by award-winning architects and designers. This means they're not mass-produced house types that get built everywhere, they're bespoke, unique and contemporary.

Internal Features

Ground Floor Accommodation

Entrance Hall

High quality NorDan front door to the front aspect providing immediate access to the stairs rising to the first floor accommodation and storage cupboard, with access to the open plan area on the ground floor.

Option A

Open Plan Kitchen/ Dining Area

17' 3" x 12' 3" (5.26m x 3.73m)

Kitchen / Dining Room

High quality Scandinavian Velfac double glazed composite to the rear aspect. Double glazed door to access the enclosed rear garden. Beautifully presented fully fitted kitchen built with a range of base and wall mounted units comprising of cupboards and drawers. Ample storage. Fitted with modern appliances inclusive of Induction Hob and Integrated Fridge/Freezer unit. , Washing Machine, Dishwasher, Cooker-hood located above the hob. Tiling to all water sensitive areas.

Open Plan Living Area

10' 11" x 8' 9" (3.33m x 2.67m)

Lounge Area

High quality Scandinavian Velfac double glazed composite to the front aspect. Television Point.

Cloakroom

Obscure High quality Scandinavian Velfac double glazed composite to the rear aspect. Two piece suite comprising of Low Level W/C and wash hand basin. Tiling to water sensitive areas. Space and gully provision for future shower.

Option B

Open Plan Kitchen/ Dining Area

15' x 12' 3" (4.57m x 3.73m)

Kitchen / Dining Area

High quality Scandinavian Velfac double glazed composite to the front aspect. Beautifully presented fully fitted kitchen built with a range of base and wall mounted units comprising of cupboards and drawers. Ample storage. Fitted with modern appliances inclusive of Induction Hob and Integrated Fridge/Freezer unit, Washing machine, dishwasher, Cooker-hood located above the hob. Tiles to water sensitive areas.

Open Plan Living Area

10' 11" x 8' 5" (3.33m x 2.57m)

Lounge

High quality Scandinavian Velfac double glazed composite to the rear aspect. Double glazed door to the rear aspect accessing the rear garden.

Bathroom

Obscure High quality Scandinavian Velfac double glazed composite to the rear aspect. Two piece suite comprising of Low Level W/C and wash hand basin. Tiling to water sensitive areas. Space and fully provisions for future shower.

First Floor Accommodation

First Floor Landing

Access to all bedrooms and family bathroom. Loft access. Airing Cupboard.

Bedroom One

15' 6" x 9' 3" (4.72m x 2.82m)

High quality Scandinavian Velfac double glazed composite to the front aspect

Bedroom Two

11' 4" x 7' 1" (3.45m x 2.16m)

High quality Scandinavian Velfac double glazed composite to the rear aspect.

Bedroom Three

11' 4" x 8' 1" (3.45m x 2.46m)

High quality Scandinavian Velfac double glazed composite to the rear aspect.

Bathroom

Three piece suite comprising of bath with mixer taps, Low Level W/C and wash hand basin. Tiling to all water sensitive areas.

External Features

Outside

Enclosed by wooden panel fencing. Small patio area. Mainly laid to lawn. Cycle Store

Parking

There is allocated parking with the property

Agent Note:

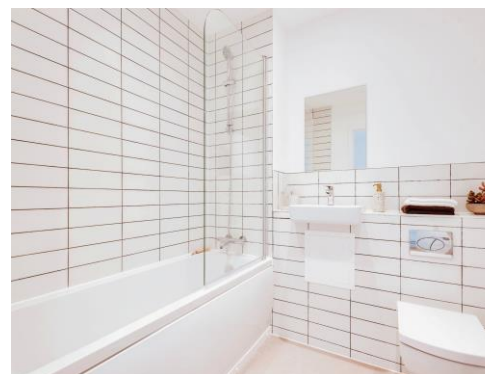
Subject to availability we have two versions of this wonderful properties which has been listed above.

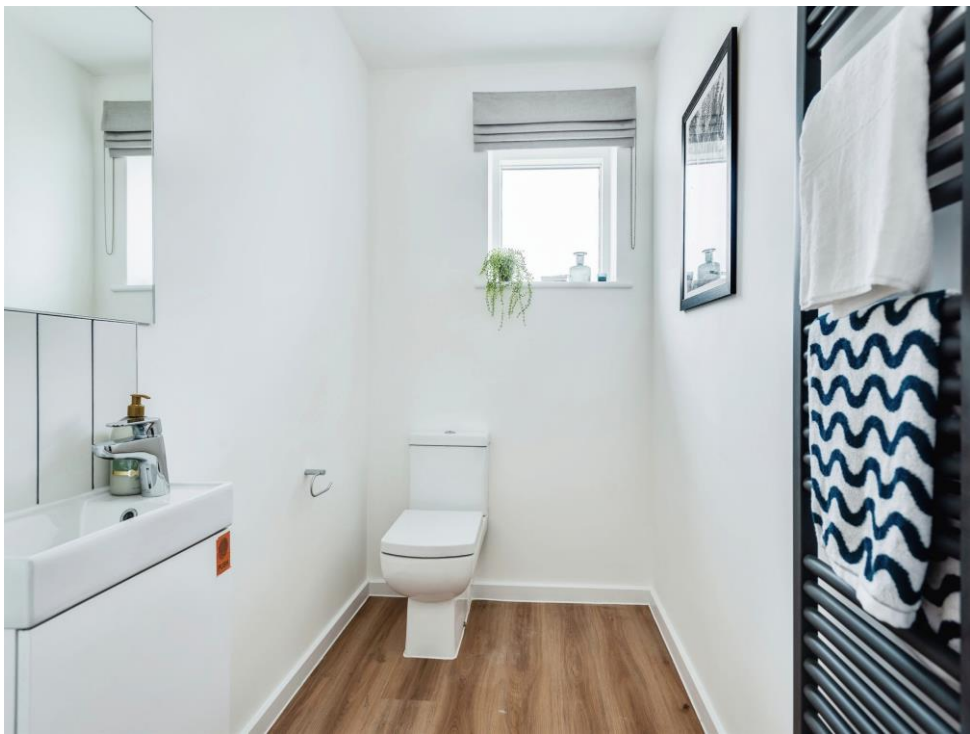
External details or finishes may vary on individual plots and homes may be built in attached styles depending on the development layout. Exact specification, window styles and whether a property is left or right handed may differ from plot to plot. Dimensions shown in any text or plan are approximate sizes only and actual sizes may be different once constructed.

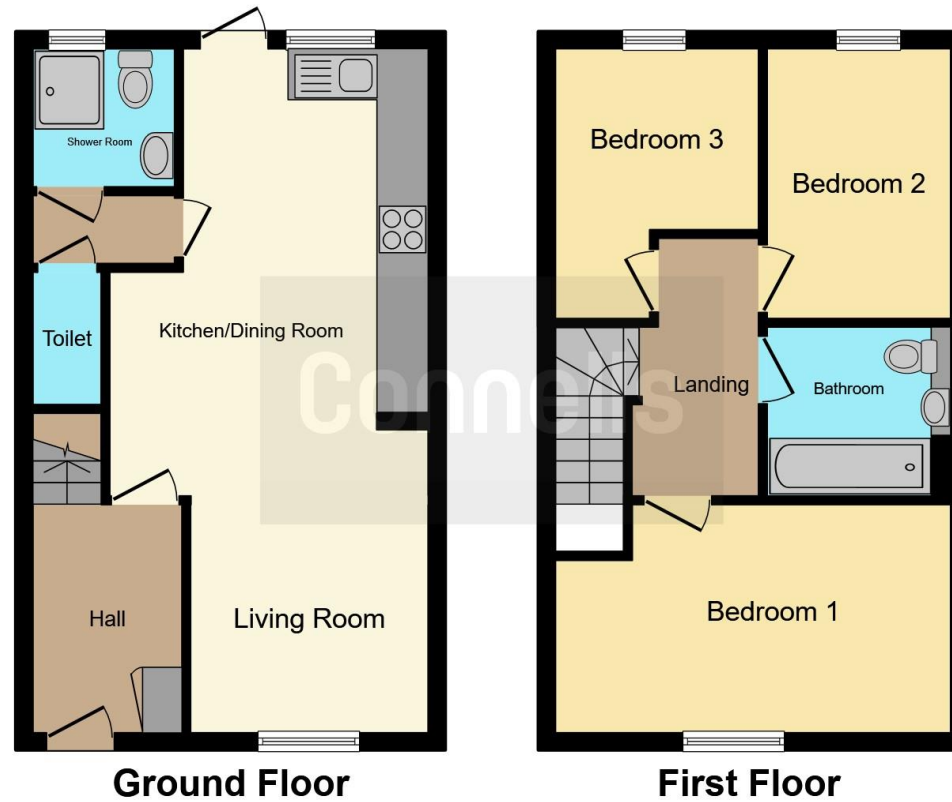
Agent Note

No other incentives are available with this Plot at this price point

Photos may not be plot specific







This floorplan is for illustrative purposes only and is not drawn to scale. Measurements, floor-areas, openings and orientations are approximate. They should not be relied upon for any purpose and do not form any part of an agreement. No liability is taken for any error or mis-statement. All parties must rely on their own inspections.

To view this property please contact Connells on

T 01793 461757
E swindonoldtown@connells.co.uk

3-5 Victoria House, Albert St
 SWINDON SN1 3BG

EPC Rating: Exempt

Tenure: Freehold

[check out more properties at connells.co.uk](http://connells.co.uk)



1. MONEY LAUNDERING REGULATIONS Intending purchasers will be asked to produce identification documentation at a later stage and we would ask for your co-operation in order that there will be no delay in agreeing the sale. 2. These particulars do not constitute part or all of an offer or contract. 3. The measurements indicated are supplied for guidance only and as such must be considered incorrect. Potential buyers are advised to recheck measurements before committing to any expense. 4. We have not tested any apparatus, equipment, fixtures, fittings or services and it is in the buyers interest to check the working condition of any appliances.

Connells Residential is registered in England and Wales under company number 1489613, Registered Office is Cumbria House, 16-20 Hockliffe Street, Leighton Buzzard, Bedfordshire, LU7 1GN. VAT Registration Number is 500 2481 05.

See all our properties at [whhttp://www.connells.co.uk](http://www.connells.co.uk) | www.rightmove.co.uk | www.zoopla.co.uk

Property Ref: SND102441 - 0006