



THE WHITLAND

3 BEDROOM DETACHED HOUSE

A spacious three-bedroom detached family home.

The ground floor benefits from a spacious open plan kitchen / diner fitted with integrated appliances and ideal for family life. The French doors look out onto the rear garden and patio. The elegant lounge includes an electric fire and surround as a focal point. There is a downstairs cloakroom for added convenience.

The first floor accommodates three generous sized bedrooms with the master benefiting from a stylish en-suite shower room.

The Whitland offers a single garage with power and lighting, block paved driveway and turf to the front garden.

HOMES OF QUALITY & STYLE

Get in touch

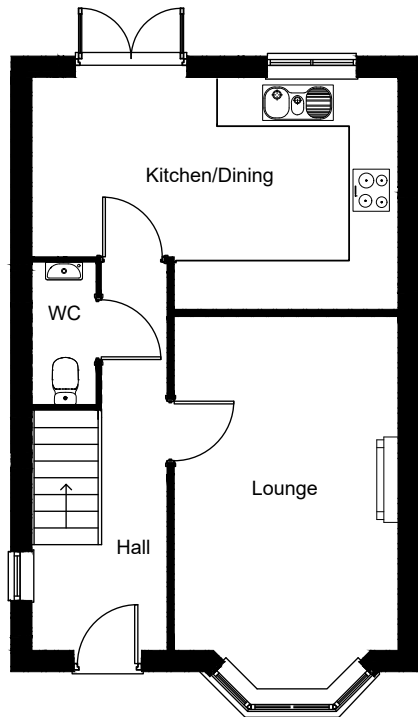
Head Office: 01522 512200
Email: info@taylorlindseyhomes.co.uk
www.taylorlindseyhomes.co.uk

Features include:

- Designer Kitchen with fully integrated Appliances including Induction Hob, Double Oven, Dishwasher and Fridge Freezer
- Garage with Block Paved Driveway
- Open Plan Kitchen / Diner with French Doors to Rear Garden
- Alarm & Security Lighting
- Fire & Fire Surround
- Porcelanosa Ceramic Tiling to Bathroom and En-suite Walls
- Luxury Fitted Bathroom Furniture
- Built in Wardrobes to Master Bedroom
- Grade A Condensing Boiler
- Flooring Package



GROUND FLOOR



THE WHITLAND

3 Bedroom Detached | Garage | Lounge
Kitchen/Dining | Entrance Hall
Bathroom | Master En-suite

Ground Floor

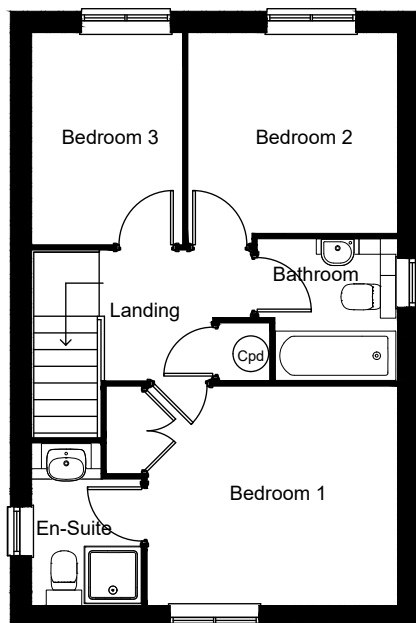
Lounge	17'2" x 10'2"	5.24m x 3.10m
Kitchen/ Dining	16'9" x 10'7"	5.10m x 3.22m

First Floor

Bedroom 1	11'6" x 10'1"	3.50m x 3.06m
En-suite	7'5" x 5'0"	2.26m x 1.53m
Bedroom 2	9'7" x 9'2"	2.93m x 2.80m
Bedroom 3	9'9" x 6'11"	2.96m x 2.10m
Bathroom	6'7" x 6'5"	2.00m x 1.95m

Illustrations and plans are indicative and for guidance only. Architectural details, materials and colours will change from plot to plot. Design changes may be made without prior notice. All dimensions shown on this brochure are approximate and intended for guidance only.

FIRST FLOOR



HOMES OF QUALITY & STYLE

Get in touch

Head Office: 01522 512200
Email: info@taylorlindseyhomes.co.uk
www.taylorlindseyhomes.co.uk

