

DRYDEN
FOUR
BEDROOM
HOME

BLOOR HOMES



A four bedroom detached home with spacious lounge and fantastic open plan kitchen / dining area featuring French doors leading to the rear garden. Downstairs also comprises a utility area and cloakroom. The first floor is home to four generously sized bedrooms and a contemporary family bathroom. The master bedroom benefits from fitted wardrobes and an en suite shower room.

DRYDEN

A STUNNING FOUR BEDROOM
DETACHED HOME

**DRYDEN
FOUR
BEDROOM
HOME**

FIRST FLOOR:

BEDROOM 1
3.43m x 2.63m
11'3" x 8'8"

EN SUITE

BEDROOM 2
3.20m x 2.45m
10'6" x 8'0"

BEDROOM 3
2.11m x 2.93m
6'11" x 9'7"

BEDROOM 4
2.34m x 2.92m
7'8" x 9'7"

BATHROOM

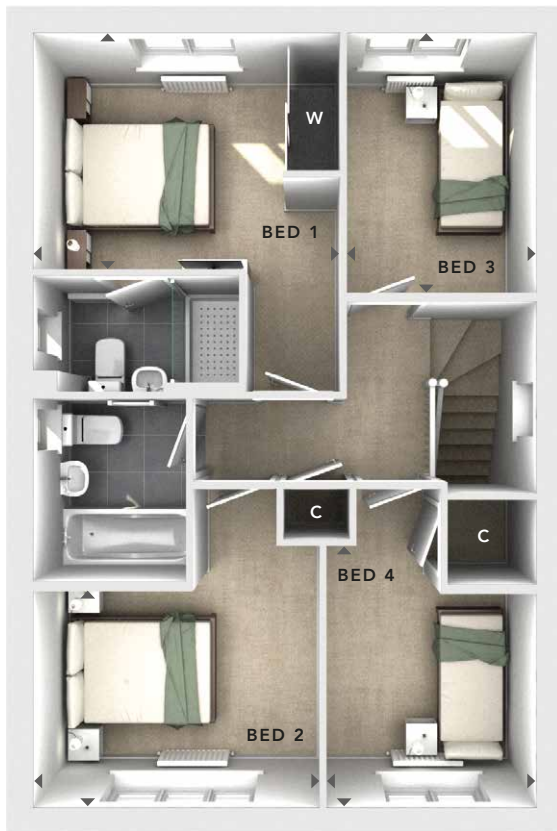
GROUND FLOOR:

LOUNGE
3.45m x 4.76m
11'4" x 15'8"

KITCHEN / DINING
4.53m x 3.76m
14'10" x 12'4"

UTILITY
1.01m x 2.85m
3'4" x 9'4"

CLOAKS



FIRST FLOOR



GROUND FLOOR

W	- Fitted Wardrobes
C	- Storage
△	- External Access
◀▶	- Measurement Points
487 BRICK EDE PAR	



These particulars are intended as a preliminary guide for prospective purchasers and should not be relied upon. The elevational treatment for individual house types shows a typical arrangement. Details of materials and design treatments may vary. Any artist impressions shown are not intended to represent any particular plot. Purchasers are advised to inspect the layout plan to establish the arrangement of the house and surrounding property. Internal layouts show a general arrangement which may vary from plot to plot. Room sizes given are approx. overall finished room sizes and subject to normal building tolerances (i.e. ± 75mm). In all instances purchasers are advised to inspect plot specific information available from our sales team. Nothing in these particulars or verbal assurance shall form or constitute part of any contract, and are given without any responsibility on behalf of Bloor Homes.