



7 Kirk Court Jubilee Terrace

Dorking RH4 1LE

£1,150 PCM

PURE RESI are delighted to offer this modern one double bedroom apartment on the second floor at the rear. Entering the property you are met by the light and spacious living area comprising of a lounge/kitchen/dining room which is the perfect space for entertaining friends and family. The modern kitchen is fitted with white high gloss base and wall units, and appliances including fridge/freezer, oven and washer/dryer. The property boasts a large double bedroom with fitted carpet while the rest of the property has wood laminate flooring. The luxury bathroom with 'Roca Suite' including a Monsoon shower over bath is done in a stylish greyscale, and the flat also benefits from secure video entry system.

Kirk Court is a block of 9 one & two-bedroom apartments laid out over three floors. Located in the centre of Dorking, within a short walk of the mainline and Deepdene train stations, meaning London Victoria is less than an hours commute. Dorking is a market town in Surrey, England between Ranmore Common in the North Downs range of hills and Leith Hill in the Greensand Ridge, centred 21 miles from London. With various primary and secondary schools, restaurants and shops this town really does cater for everyone.

PURE RESI homes are designed & built exclusively for renters. As a tenant of ours you will benefit from the security and peace of mind only a professional landlord can offer. Longer term letting, dedicated management & maintenance teams and access to a Tenants App providing useful documents and feedback features are just some of the benefits of renting from us.

- Luxury Modern Apartment
- Open Plan Living Area
- Modern Fitted Kitchen
- Integrated Dishwasher
- No Parking
- Second Floor (No Lift)
- Built Exclusively For Renters
- Walking Distance To Station
- Pre- Wired for Sky TV
- Council Tax Band C

Viewing

Please contact Pure Resi on 01306 888000 to arrange a viewing appointment for this property or if you require any further information.



Floor Plan

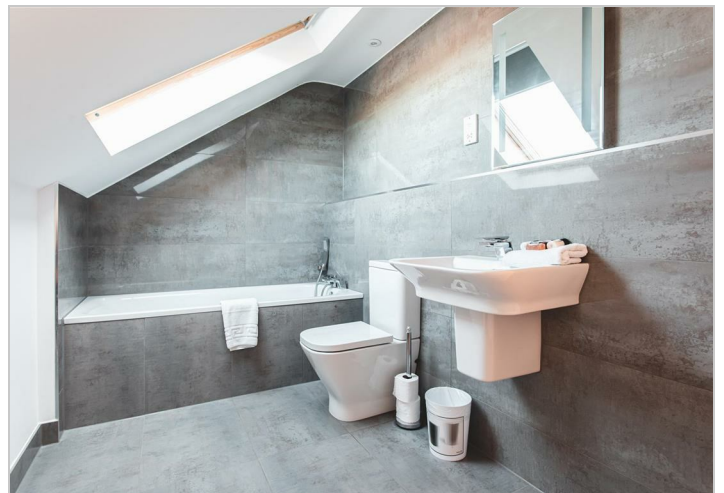
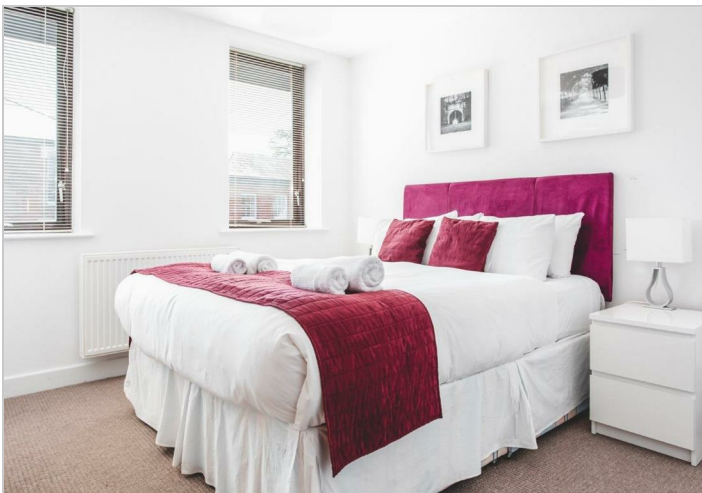
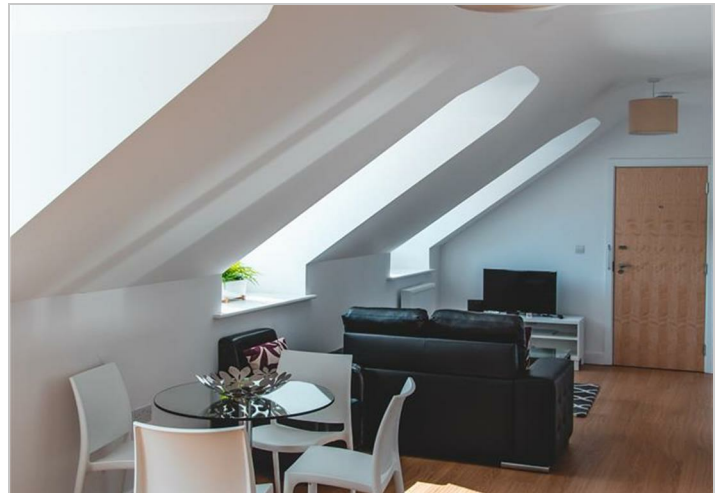
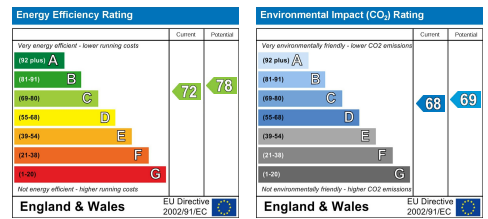


Living	10.0m x 4.1m	32'9" x 13'5"
Bedroom	3.9m x 3.0m	12'9" x 9'10"

Area Map



Energy Efficiency Graph



These particulars, whilst believed to be accurate are set out as a general outline only for guidance and do not constitute any part of an offer or contract. Intending purchasers should not rely on them as statements of representation of fact, but must satisfy themselves by inspection or otherwise as to their accuracy. No person in this firm's employment has the authority to make or give any representation or warranty in respect of the property.