



## 29 Marketfield Court Marketfield Way

Redhill RH1 1EU

**£1,700 Per Calendar Month**

Presenting this modern luxury two double bedroom, two bathroom apartment situated on the fourth floor at the front of the block. Featuring a spacious open planned living area with light oak effect wood laminate flooring and a private balcony. The kitchen is fitted with white high gloss base and wall units and appliances which include; integrated oven, vitroceramic hob, fridge/freezer and washer/dryer. The hallway has a storage cupboard while the double bedrooms include built-in wardrobes and fitted carpets. Finishing off the property is the three-piece luxury 'Roca' bathroom suite with monsoon shower over bath. The block boasts a smart lift & video entry with mobile app control meaning you can receive intercom calls from wherever you are.

Marketfield Court is a high specification purpose built development comprising of one & two bedroom apartments, many with private balconies. Situated in the heart of Redhill town centre and within just a 2-minute walk of the station the location here could not be any more perfect, especially if you need to commute by train every day. Step in to a welcoming and modern foyer, the smart lift or stairs lead you up to these brand new high specification apartments. With luxuriously appointed kitchens and bathrooms these are arguably the finest rental apartments available in the town.

PURE RESi homes are designed & built exclusively for renters. As a tenant of ours you will benefit from the security and peace of mind only a professional landlord can offer. Longer term letting, dedicated management & maintenance teams and access to a Tenants App providing useful documents and feedback features are just some of the benefits of renting from us.

- Luxury Modern Apartment
- Open Planned Modern Kitchen
- Modern Appliances
- No Parking
- Built Exclusively For Renters
- Private Balcony
- Forth Floor (Lift Access)
- Town Centre Location
- Excellent Transport Links
- Council Tax Band D

### Viewing

Please contact Pure Resi on 01306 888000 to arrange a viewing appointment for this property or if you require any further information.



## Floor Plan

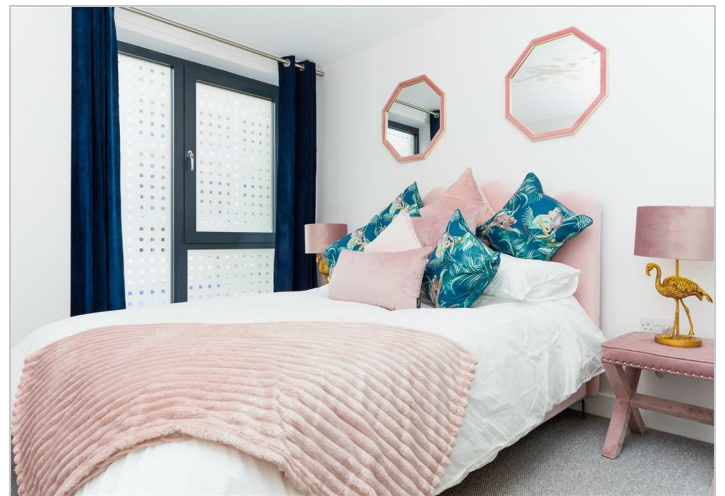
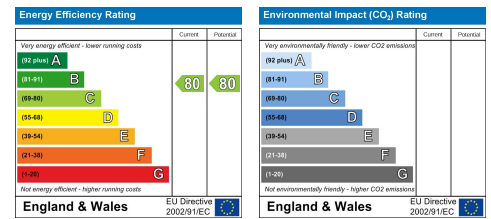


Living	7.0m x 6.4m	23'0" x 21'0"
Bedroom	3.6m x 3.3m	11'8" x 10'8"
Bedroom	3.6m x 2.9m	11'8" x 9'5"

## Area Map



## Energy Efficiency Graph



These particulars, whilst believed to be accurate are set out as a general outline only for guidance and do not constitute any part of an offer or contract. Intending purchasers should not rely on them as statements of representation of fact, but must satisfy themselves by inspection or otherwise as to their accuracy. No person in this firm's employment has the authority to make or give any representation or warranty in respect of the property.